

Inside this Issue:

Soil & Water Conservation Section Pages 15 - 16S

Public Notices

Pages 6-8



PRSR STD  
ECRWSS  
U.S.POSTAGE  
PAID  
FAIRMONT, MN  
PERMIT NO. 192

# PhotoPress

Only good news

Wednesday  
January 29, 2020

Volume 56 | Number 38

SERVING MARTIN COUNTY PLUS ADJACENT MINNESOTA & IOWA COUNTIES 2020 Martin County & City of Fairmont Legal Newspaper

## Super Savings at your Fairmont HyVee® EMPLOYEE OWNED

Ad Prices effective Thursday, January 30 - Saturday, February 1



**\$5.99**  
Bakery Fresh Cookies  
20 count

**FUEL SAVER**  
**EARN 50¢ OFF PER GALLON**  
**HyVee®**  
EMPLOYEE OWNED  
**With grocery purchase of \$50 or more**  
Ad Prices effective Thursday, January 30 - Saturday, February 1



**\$2.99/lb.**  
Deli Shaved Ham



**3/\$3.00**  
Fresh Egg Rolls

**Football Party Bowls**  
**\$5.00**



**Sold in 5lb bags**  
**99¢/lb.**  
True Chicken Drumsticks



Purchase ANY  
**2 Fresh Guacamole OR Salsa**  
and get a **FREE BAG** of Kitchen Chips



**2/\$5.00**  
Pretzel Chips  
select varieties



**\$5.99**  
Shrimp Ring  
12 oz.



**2/\$4.00**  
HyVee Frozen Garlic Toast  
11.25oz



**\$4.99**  
Valley Popcorn  
20oz



**2/\$3.00**  
Bakery Fresh Hamburger or Hot Dog Buns



**10/\$8.00**  
Special Recipe Fresh Brats



**\$2.99**  
Top the Tater  
24 oz

### 25 YEARS AGO IN THE PHOTO PRESS

**WEEK OF FEBRUARY 1, 1995**  
Fairmont recording artist Jon Denzene will be featured on an upcoming segment of the PBS affiliated program "Venture North", which originates from PBS station WDSE in Duluth. The segment will highlight Denzene's recording of nature sounds and composing of instrumental music in his Fairmont studio.  
\* \* \*

Howard Enquist, Fairmont auto dealer, sold Reco Motors, Inc. to two long-time employees, Gary Rosen and Jim Teubner. Rosen was now majority owner, joined by Teubner in management of the company.  
\* \* \*

Associate Optometry, the optometric practice of Drs. Paul Seibert and James Busche, moved from the previous location on Blue Earth Avenue to new facilities in the Maple Pointe office building, located at 1307 Albion Avenue, at the intersection of South Albion, State Street and Johnson Street.

### 50 YEARS AGO IN THE PHOTO PRESS

**WEEK OF FEBRUARY 1, 1970**  
The Fairmont City Ambulance came into service, managed by Donald Anderson and a crew of volunteers. The contract with the city was dated February 1st. The service was intended to replace that which had been furnished by the funeral homes.  
\* \* \*

The Martin County National Bank re-elected officers: C. F. Holden, president; M. K. Kastning, vice president; Osmer Fowler, cashier; C. T. Baker, Lorin Gellert and Melvin Schultz, assistant cashiers. Other board members were Frank Winzenburg, Rollo Crowther and Fred C. Krahmer.



# “Fight Like Elsie” – raising awareness for Pediatric Cancer

by Ellyn Swanson

Elsie Leigh-Ann Swanson was born June 7th, 2019 to Evan Swanson and Ryley Becker of Sherburn. As soon as Elsie entered the world, everyone in her family knew she was something special.

Moving through the first four months of her life, Elsie was a happy, smiley, active baby who loved her mama and daddy, and 2-year-old brother, Henry. Fast forward to October of 2019, Ryley noticed that Elsie just was not her normal self, and the left side of her abdomen had started to bulge out larger than her right side. Following her parental instincts, Ryley took Elsie to the doctor where they did an ultrasound. As soon as the results came back, Ryley and Evan heard words that would be any parent's nightmare. “Elsie has two tumors. One on top of each of her kidneys, which are most likely a form of childhood cancer. You need to get to Children's as soon as you can.”

Elsie was admitted to Children's Hospital in Minneapolis that same day, and within that week, Elsie's little life and the



lives of her family were changed in the blink of an eye. She underwent x-rays, CT scans, MRIs, a MIBG scan, and many tests to help develop a plan of action for how her team of doctors were going to do her first surgery and chemo treatment. The scans showed that Elsie had three tumors total, one on her left kidney, two on her right kidney,

and a lesion on her liver, which gave the doctors a better idea of what they were looking at. Elsie endured a several-hour surgery which included a bone marrow biopsy, tumor biopsy, and port placement in her chest. The surgery was successful, but established the fact that



she was starting her fight with cancer. The tumor biopsy confirmed Stage IV Metastatic Neuroblastoma and the bone marrow biopsy revealed that the cancer had already spread there. Elsie was also diagnosed with two gene mutations that make this type of cancer aggressive and more likely for reoccurrence. While this news was absolutely devastating, Elsie was ready for battle.

The next day, she started round one of chemotherapy and her amazing team at Children's went over the plan of getting Elsie to remission. Her plan includes six rounds of chemotherapy, additional surgery to remove tumors, a stem cell transplant, radiation, and immunotherapy. Elsie will have to make frequent trips to Children's Hospital over the next two years to receive scans in addition to requiring daily medication to prevent her cancer from reoccurring. While Elsie and her family have a very long road ahead, they have an amazing community of support that has rallied together to fight this battle with them.

“We want people

to know that this can happen to anyone at any time,” Ryley said. Cancer is evil, but when it affects an innocent child, that is a different story. Elsie's family hopes to raise awareness for Neuroblastoma and pediatric cancer by telling her story. More



information about Elsie's story can be found on the Facebook page “Fight Like Elsie – Neuroblastoma Journey” and on her Caring Bridge website.



**KORTE-JONES ENGAGED** - Rachel Korte and Andrew Jones, both of Mankato, announce their engagement and upcoming wedding. Parents of the couple are Diane and Joel Armbrust of Fairmont, Lynn Korte of Augusta, Georgia and Mary and Randy Johnson of Mankato. Rachel graduated from Presentation College with a Bachelor's degree in Nursing and is employed with Mayo Health Systems, Mankato. Andy is employed by the Department of Human Services in St. Peter, MN. A February 2020 wedding is being planned. (Submitted photo)

To help with ongoing medical expenses, a benefit will be held for Elsie Sunday, February 9th, 2020 at the Martin County West Junior/Senior High School in Sherburn, Minnesota. A pancake breakfast will be served by the Sherburn Lions Club from 9:00 a.m. – 1:00 p.m. with a Silent Auction from 9:00 a.m. – 12:30 p.m. “Fight Like Elsie” t-shirts will also be sold at the benefit to help raise funds.

Elsie is the granddaughter of Larry and Kathy Becker (Winnebago), Mike and Laura Kern (Trimont), and Phil and Renetta Swanson (Sherburn). If you are interested in donating, but are unable to attend the benefit, donations can be made out to “Elsie Swanson Benefit” and mailed to Farmers State Bank, 100 W Wenburg St PO Box 67, Dunnell, MN 56127. If you have any questions relating to the benefit, please contact Ellyn Swanson at ekayswanson@gmail.com.

The Regional Worship Center will host a **pancake, sausage and egg breakfast** on Monday each week from 8 to 10 a.m. at the church, located at 2 Crossroads Drive, across from Kum and Go in Sherburn. All are welcome to join them.

Tuesday, February 4th, **People First** will hold their monthly meeting from 4:00-5:00 p.m., at Fairmont's Pizza Ranch. Anybody needing a ride to this event or has questions about People First should call Pat Kietzer at 507-848-5017.

## Community Options & Connections

*Community Options & Resources (COR) is a private, non-profit organization which provides residential and in-home support services to persons with disabilities in Martin, Jackson and Watonwan Counties. The COR mission is to provide a service promoting the ability of each individual to lead a productive and enjoyable life in all environments with the support of professionally skilled staff.*



Doris (right) started as a Direct Support Professional with COR in July 2017. She transferred to another site in October 2019 and has this to say: “I have had the opportunity to work with 4 ladies [in Sherburn] and thoroughly enjoy it. The ladies are very close and enjoy daily teasing and laughing, sometimes this can be at staff's expense but always in fun.

Debra (left) and I enjoy shopping, eating lunch at Hy-Vee, and an occasional movie. Debra's favorite thing to do is go shopping, but the next would be watching the Minnesota Twins. She has quite a collection of memorabilia including Twins-themed curtains, bobble heads, posters, not to mention her Twins attire. Debra wishes the Twins played year-round; when the season ends, it is a sad day at Prairie St. Debra has a big heart and continues to visit a former housemate at her new home. Debra likes to make people laugh by being silly. It is very important to Debra that she stay in contact with her family through visits, phone calls, and letters. Her sister Sylvia ensures Debra never runs out of her homemade strawberry jam from Illinois.

Debra will greet anyone who says “hi” with a big smile and a high five. Debra loves teasing people and will “April Fools” you all year long. Out and about, you will see Debra in her Twins apparel all year long as she is a true committed fan. Debra also carries a deck of cards in her pocket and is always looking for a game of “war”.

*Since 1975, COR's values have been the people we support, our staff, our homes, networking, and the future. If interested in joining the COR team as an employee or a volunteer, please visit [www.cormn.com](http://www.cormn.com) or call (507) 764-4612, ext 5.*

Boy Scout Troop 56 will hold their **49th Annual Pancake Breakfast Fundraiser** on Sunday, February 2nd at Grace Lutheran Church in Fairmont. They will be serving from 8 a.m. to 1 p.m. in the church fellowship hall. All-you-can-eat pancakes will be served with scrambled eggs, choice of sausage or ham, milk, coffee or juice. Cost is \$6 per individual or \$20 per family. Children age five and under eat free with parent ticket.

## IRA? Don't wait to contribute.



**Paul Schellpeper**  
Financial Advisor  
1001 East Blue Earth Ave  
Suite B  
Fairmont, MN 56031  
507-238-4244  
[www.edwardjones.com](http://www.edwardjones.com)



**Drew Schellpeper**  
Financial Advisor  
1001 East Blue Earth Ave  
Suite B  
Fairmont, MN 56031  
507-238-4244  
[www.edwardjones.com](http://www.edwardjones.com)

**Edward Jones**  
MAKING SENSE OF INVESTING  
[edwardjones.com](http://edwardjones.com)

MKT-5894J-A

Member SIPC

## HOME FOR SALE - Swea City-



→ **308 Hwy. P-30 N.** ←

1½ Story Craftsman Style • Full of Charm and Character • Newer Furnance, A/C, Roof, Electrical and Plumbing • Wood Floors and Full Basement • 3 Bedrooms • 1.5 Bath • 2 Car Garage and Work Areas

→ **\$57,500** ←

**Kevin Lunn, Realtor • 515-836-8202**  
BHHS First Realty • Ankeny, IA





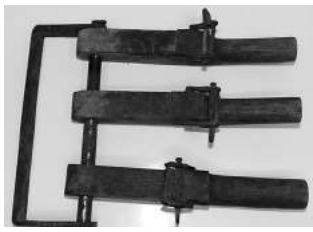
## Jeff's Jottings

In 2015, April Fool's Day fell on a Wednesday (which is when the paper is printed), so I decided to play an April Fool's joke on our readers by announcing that I was stepping down as manager of the Fairmont Photo Press to take over as manager of the Fairmont Opera House. I was pretty surprised by the response I received then, especially because I didn't reveal it was a prank unless readers read the entire article. Well, this time around, I am not playing a prank, but rather am letting you know of some interesting events that have taken place in my life as of late. I am in the process of going through the entrance requirements to be able to attend Seminary at Ft. Wayne, Indiana this fall to begin instruction to become a pastor in the Missouri Synod church, namely

as an associate at my home church of St. John Lutheran Church in Sherburn. No, this is not an early April Fool's joke this time, but is an opportunity I have prayed for a long time. I will remain at the Photo Press until the middle part of February. I will have more details in a future column.

### "What is it?" unanswered

Our "What is it?" item for the past two weeks remains unanswered. I have even tried finding something similar to it online and have had no luck in getting an answer myself. So, I guess this will be filed to possibly be revisited in the future. This



week guest columnist Al Batt sent me his own "What is it?" item. As you can see in the pictures, it is extremely rusty, but hopefully the pictures can give you some idea what it is. You can see the size of the item compared to a quarter placed next to it. It appears to be made of wire (which is extremely rusty!) Al has his own ideas what it might be, but we want to know if you might know what it is. So what is it? If you know the answer or want to



guess what it is, email me at jeff@fairmontphotopress.com or call us at 507-238-9456 with your answer. Do you have an item you think would be good to have in this column? Just bring it in and we will take some pictures and get measurements and you will see it featured in a future Photo Press.

### Martin County food pack

It is quickly approaching! The Fairmont Kids Against Hunger Food Pack will take

place on Saturday, February 15th at the National Guard Armory. Shifts of teams will work to pack food for local food shelves and to be shipped to Haiti and other places in the world. There is still time to sign up for teams or you can just come on your own and we will find a team for you to help out. My family and I have either had a team ourselves or have took part in other teams for a number of years and we absolutely love taking part! If you have never been a part, try it out this year. Cash donations are also welcome, to help with the costs of putting on this food pack. In 2019 the Martin County Food Pack put together over 139,104 meals. There were over 500 volunteers that helped this to happen. For more information, you can contact Karen Sandhurst at 507-848-1260 or email kahfairmontmn@gmail.com.

### Soup, pancakes and a free meal!

Here are a brief list of some of the events happening in the coming week: • Wednesday, January 29th

First Congregational UCC will have a free community meal at 5:30 p.m. • Thursday, January 30th Shepherd's In will be serving free hot soup at the Blazer Bar Hall on Downtown Plaza in Fairmont from 5 to 7 p.m. • Sunday, February 2nd, Boy Scout Troop 56 will have their 49th annual pancake breakfast fundraiser from 8 a.m. to 1 p.m. at Grace Lutheran Church in Fairmont. • Monday, February 3rd, the Regional Worship Center in Sherburn will host a pancake, sausage and egg breakfast from 8 to 10 a.m. • Don't forget the Open Door Meal at Grace Lutheran and the Wednesday evening meal at Fairmont United Methodist Church each week from 5 to 6 p.m. Both have great food and fellowship. Have a great week!

*Drive safely - visit a shut-in or family member - eat, play, shop local - everything happens for a reason.*

Jeff

## "Just the other day"

Guest Columnist

Tom Palen, broadcaster, pilot, writer



### Goodbye Rosie

On July 9th, 2011, Melissa and I went to Des Moines, to celebrate her mom's birthday. Our youngest daughter, Annie, who turned 16 just nine days before, went with us. We enjoyed a good meal and conversation at the Machine Shed Restaurant. After dinner, we gave Annie a small gift bag. Inside was a key fob and a car key. Her eyes lit

up and a smile shot from ear to ear. She thought we might be pranking her when we told her to go to the parking lot and find her birthday present.

She used the keyless entry and the car's horn to find a shiny, bright red Chevy Cobalt sitting in a parking space under a shade tree. She was in disbelief. "Is this for real? Is this really mine?" We

told her to get in and see if the key started it. She did and it did. It was her first car and tears of joy fell. She immediately named the car "Rosie."

On the way home, I rode with Annie, while Melissa followed in our car. Riding in the left lane, I told Annie to get in the right lane. She turned on her signal and BAM, to the right lane she

went...cutting off the car in that lane. "We're going to have to work on your highway driving skills." I told her.

A few weeks later, I

anymore."

It seemed like just a few weeks more, but it was a year later, when I stood in the front yard and watched Annie drive



stood in the front yard and watched Annie drive off for her first day as a junior in high school. I remember thinking, "I guess she doesn't need us to take her to school

away in Rosie. This time she was headed off for her first day as a senior in high school. In that bittersweet moment, a flurry of "first days" went racing through my mind.

Our little girl was growing up - and too fast. I wondered if she would still need me?

A week or so ago, Annie called me with bad news; Rosie died on the side of the road. She had taken the car to a mechanic and was still having trouble with it. Reality hit. She had owned the car for eight and a half years, putting well over one hundred thousand miles on it. It was a used car when we bought it; the time had come to replace Rosie.

...the roads were icy... cars in the ditch... Goodbye Rosie, hello...

For the rest of this story, visit our website at fairmontphotopress.com or you can request a paper copy by stopping in to the Photo Press office.



2020 Martin  
Soil and Water  
Conservation  
District



## OPEN HOUSE & CONSERVATION TREE ORDER DAYS

Friday, January 31, 8 a.m. - 4:30 p.m.  
and Saturday, February 1, 8 a.m. - noon

### WE WILL HELP YOU WITH YOUR SPRING TREE PLANTING PLANS

**FOR ALL YOUR CONSERVATION TREE NEEDS:**  
**Shelterbelts - Field Windbreaks - Living Snowfences**  
**Hardwood Plantings - Wildlife Habitat**

(Trees available through this program are for conservation purposes only)

at Martin Soil & Water Conservation District's Office  
923 N. State St., Fairmont — Suite 110

**507-235-6680**

For complete details & tree order form, stop out anytime during our regular office hours, or visit our website at [www.martinswcd.net](http://www.martinswcd.net)

Free  
Coffee, Cookies,  
Donuts & Info...  
Drawing for  
Free Trees!

507-766-3910



**Baha Gutter  
Company**

Get your mind off your gutters!

**Brett Meyeraan** Owner  
[Meyeraanbw@gmail.com](mailto:Meyeraanbw@gmail.com)  
Fairmont, MN

### MARTIN COUNTY HUMANE SOCIETY

The Carl Nettifee Memorial Animal Shelter

522 E. MARGARET ST. • FAIRMONT, MN • 238-1885

[pawprints.petfinder.com](http://pawprints.petfinder.com)

Email: [pawprints01@hotmail.com](mailto:pawprints01@hotmail.com)

HOURS: Tue & Thurs 6-8 p.m. • Sat 10 a.m.-2 p.m.



#### A FEW OF OUR CATS AVAILABLE FOR ADOPTION:

**KRIS** is a black and white tuxedo short haired kitty, about 6 months old. He is very playful and loves attention. He would be great in an active household.

**VANDAL** is an all-black short-haired handsome cat, about 6 months old. He loves to play and interact with people and would be great in an active home.

#### A FEW OF OUR DOGS AVAILABLE FOR ADOPTION:

**TUCKER** is a 5 yr old long-haired terrier mix. He's house trained and good with small dogs and older kids. He will need patience and reassurance.

**LUCIOUS** is a senior yellow lab/golden retriever mix. He's house trained. Okay with cats, and loves people. He's okay with dogs.

**\*\*ROSE SALE\*\*** Call the shelter today to place your order for a dozen multi-colored roses for only \$20! Pick up is Friday, February 14th, from 8 a.m. to 5 p.m..

**Fairmont High School Class of 1960**, spouses, and friends will meet for lunch at 11:00 a.m. on Tuesday, February 4th at Pizza Ranch in Fairmont.

The **Fairmont American Legion Auxiliary Unit 36** will meet Tuesday, February 4th at 7 p.m. at Goldfinch Estates in Fairmont. All those interested are encouraged to attend.

Grace Lutheran Church in Fairmont hosts an **open door meal** Wednesday evenings from 4:45 to 6:00 p.m. each week. Wednesday, January 29th they will serve sloppy joes. On February 5th it will be spaghetti. All meals include fruit, veggies, peanut butter/jelly sandwich, cookies, milk, water and coffee. For a free will donation.



# Five Tips to Start Decluttering

Guest Columnist

Kim Kreiss, Realtor EXIT Realty - Great Plains



The beginning of the year is usually full of fresh starts and new beginnings. Many choose to clean and organize during the cold winter months.

After downsizing a year ago, moving from 2200 square feet down to less than 900 square feet, I've already purged and sold many items. After living in our small house with no basement and no garage for a year now, I'm realizing we have more work to do in creating a less cluttered and serene environment at home.

If you haven't downsized yet, you are probably overflowing with things everywhere and overwhelmed about how and where to even begin the process. I read a lot of articles about organizing, because I enjoy organizing, strange as that may seem. Here are some ideas to start and begin the process of decluttering or downsizing your things so you don't feel like you're being suffocated by "stuff."

1) Start easy. Start with one area a day or week. Start with one drawer such as your junk drawer. Or maybe work on clearing off and cleaning the kitchen countertop. Once you organize your first spot, you will feel so much better and you'll be motivated to move onto the next area. Other suggestions of where to start: a cabinet, closet, or storage tote, and keep going! Don't put pressure on yourself to get it all done in one day or one weekend, especially if you haven't purged in quite a while. It took a long time to accumulate all your things so it will take time to get rid of the excess.

2) Buy a paper shredd-

der if you don't already have one. Do you have paper everywhere? I think I burned out a paper shredder before we moved. Saving files and documents for seven years is recommended by tax professionals. If you have 20 years of paper stored in your home, it's time to start shredding. (side note: shredded paper is not recyclable). Save what you can on your computer or external hard drive or in the cloud.

3) Turn off your emotions. Sentimental value is one of the biggest culprits of gathering things until you have way too much. I watched a TV show once that suggested, if you have a keepsake you're hanging onto and you don't need it but want to remember it, take a picture. It will take up much less space. That's exactly what I did when I sold off my Christmas Village, where I collected more than 15 buildings and had tons of accessories. I missed it a bit this Christmas, but I don't miss the 10 storage totes that I hauled around for the last 30 years. If you keep something sentimental, use it. Don't wait for "someday." I kept my grandma's china set and that's what we use regularly (we don't have a dishwasher, so we're handwashing everything already).

One thing I've learned over the years of purging every time I've moved my 27 times is you will have to get into the right mindset to purge. If you've ever held a garage sale, you know this process. You'll have to disconnect and take every item through a filter. As I sorted through items for downsizing, I simply asked myself if

we truly needed it. If not, it went through another question-do we or will we have room to display it properly or use it properly. I had collected so many jar candles and I decided to keep them as we could use them, and we had room for them. I then promised myself I would burn them all before I purchased any new ones which would create more room down the road. Stocking up on items when they're on sale is my weakness. A year later I'm still using all the extras I had on hand.

4) Organize items with similar items. Whatever container fits in your spot, or whichever container you like, keep like items together. Keep hobby materials all together instead of in several different areas in your home. Keep décor items all in one spot. Keep kids' memories all in one spot (ask your kids as they get older if they even want them-most do not). Create a special spot to display your collection-rotate them so you don't have to have everything out all at once. By the end, everything should have a spot that you can easily put it away after using it. The feeling of clutter occurs when all your things are sitting out in plain site with nary an empty spot to rest your eyes. Containing things into caddies, or baskets or antique crocks makes your items look nice if they have to sit out.

5) Create systems for drop areas. I think everyone has that spot that gathers mail, newspapers, keys, dog leashes, homework, shoes...you get the idea. It's that one spot you dump the items you don't want to deal with in that

moment. However, not everyone has the luxury of a mudroom. And even mudrooms get cluttered if not used properly. Install hooks to hang your keys when you walk in the door so you can find them when you leave. Put a little table inside the door with a basket for mail-promise yourself you'll clean it out every time it gets full. If you don't have a coat closet for coats, boots and shoes, hang some hooks on the wall strong enough to hold coats, and a tray on the floor to prevent wet boots and shoes from damaging your flooring. A rug in front of the door will help deter as much dirt

from entering your home as well.

Even if you're not selling your home, keeping control of the clutter will keep your home looking nice and it will make cleaning it a lot easier when everything is put away. There are so many other tips you can find online-Pinterest is loaded with ideas.

As you clean out cabinets, drawers and closets vacuum and wipe them out, maybe line the drawers and shelves with some pretty contact paper, before loading back up with the items you've decided to keep.

Creating piles for selling, giving away, and

throwing away is also a great tip. Follow through with these piles as quickly as you can so you don't find yourself grabbing things out of the piles to keep. Get your family involved-you all contribute to the clutter, ask everyone to chip in throughout the process.

In the end, you should have all the items you need, or your most precious, cherished items that you will use.

Remember, new starts and new beginnings! And know that I'm right with you-I have more purging to do! I think I'll start with the junk drawer.

## THANK YOU

The Martin County Historical Society Board of Directors would like to acknowledge and thank those individuals and businesses listed below that contributed to our "2019 Year End Fundraiser" in making it a success.



Martin County Historical Society Pioneer Museum



Martin County Historical Society Pioneer Parsonage

### GOLD SPONSORSHIP LEVEL

Christine Luedtke Montesano  
Day Plumbing, Heating & Cooling/  
Bill & Chris Krumholz  
Drew & Paul Schellpeper & Family  
Rosen's Diversified, Inc.  
Van DeWar

### SILVER SPONSORSHIP LEVEL

Jeff & Sue Greischar Family Foundation  
Kahler Electric Company  
Photo Press

### BRONZE SPONSORSHIP LEVEL

Bank Midwest	Peterson-Anthony Insurance Agency
First Farmers & Merchants Bank	Profinium
Hertzke Construction & Millworks	State Bank of Fairmont
Metro Sales Inc.	Wife & Children of Robert W. Luedtke

Jon & Cindy Anderson  
David Antes  
Judith Beckman  
Andrew & Wilma Bittinger  
Jim & Barb Bock  
Eugene & Marilyn Borchardt  
Marilyn Bouchet  
Dick & June Bowdin  
Mildred Brodt  
Joe Brown  
Marcia Buck  
Joe Cade  
Craig & Marilyn Carrigan  
Chris & Brenda Carstensen/  
Carstensen Cabinetry  
Barbara Champine  
Mr. & Mrs. Robert Clark  
Lloyd & Barb Clemmensen  
Joan Closs  
Bill Crawford  
Carol Cress/Cress Refrigeration  
Jenelle Cuning  
Don Dahlke  
Dan's Appliance  
James Droege Mueller  
Dwayne & Jean Ehlert  
Elizabeth Chevrolet  
Richard & Kathleen Eyerly  
Fairmont Ford  
Stan & Shirley Furber  
Ingrid Gangestad  
Pat Gimm  
Jane Gjevre  
Harlan & Larainne Gorath  
Harriet Haglund  
Barb Hall

Phil & Sharon Hanson  
John Harding  
Diane Hendricks  
Dr. John & Donna Holstine  
Mark & Valerie Hooper  
Tom Horton  
Hy-Vee  
Jake's Pizza  
Kahler Automation  
Wayne & Char Kahler  
Bob & Connie Katzenberger  
Ken Keels  
Gloria Kiester  
Bob & Kay Kloeckner  
Dave & Beth Kloeckner  
Fred C. Krahmer  
Fred W. & Shelly Krahmer  
Leon & Rose Marie  
Lammers  
Norm Langford &  
Sandy Hallstrom  
Cathy Latham  
Lakeview Funeral Home  
LaDonna Levik  
Judith Lohrenz  
Warren Luckow  
Arnold & Donna Madsen  
Paul & Kelly Maplethorpe  
Dean Mark  
James & Megan Marushin  
Leo & Pauline Mau  
Mark McNea  
David & Sharon Miller  
Bob & Mary Millette  
Mary Jo Moltzen  
David & Carol Moore

Randy & Marcia Musser  
Jerry & Pat Nasalroad  
Scott & Anne Nickerson  
Ernie & Sandy Nuss  
Richard R. Palmer  
Jeff & Dona Paris  
Alice Peters  
Douglas & Dorothy  
Richards  
Bill & Sharon Richardson  
Jon & Cheryl Rippke  
Don & Rhonda Rudolph  
Steve & Kathy Salomone  
Allen Scheef  
Phyllis Schreiber  
Paul & Karen Schrooten  
Kim & Jan Shaffer  
Sherburn Nursery &  
Floral  
Norma Skordahl  
Gordon Spielman  
Jerry Stock  
Marv & Lola Talledge  
Total Comfort Systems  
Lenny & Carol Tvedten  
Roger & Carol Voss  
Bonnie Walser  
Margo Weaver  
Welcome State Bank  
Michael Winkler  
Frank & Kate Winzenburg  
Ken Wolter  
Mike Wolter

The MCHS is a 501(c)(3) organization. Contributions are tax deductible to the full extent allowed by law.

Fairmont United Methodist Church continues its **Wednesday Evening Suppers** from 5 to 6 p.m. at the church, 119 E. 2nd Street in Fairmont. This Wednesday, January 29th they will fish filets, mashed potatoes and creamy coleslaw. All dinners include peanut butter and jelly sandwich, beverage and donated desserts. A \$2 donation is suggested.

## eat play shop LOCAL

The Shepherd's In Soup Kitchen will serve a **free soup meal** every Thursday from 5 to 7 p.m. in the Blazer Hall, 95 Downtown Plaza in Fairmont. Free rides are available by calling Curt at 507-236-5362.

Kids in grades 3-6 are invited to join the Martin County Library for "Sweet Treats and Reads" at the Fairmont Library! We'll have treats, book-related activities and talk about new books we're reading or excited to read! This event is free and no registration is required. Join us on Tuesdays at 4 p.m.: February 4th, March 24th and April 14th.

<b>PhotoPress</b> Only good news Your complete printing headquarters & free weekly newspaper	<b>eat play shop LOCAL</b> IFPA INDEPENDENT FREE PAPERS OF AMERICA	 CIRCULATION AUDIT BY CIRCULATION VERIFICATION COUNCIL
112 E. First St.   PO Box 973 Fairmont, MN 56031 Hours: Mon-Fri, 8am-5pm PH: (507) 238-9456   FX: (507) 238-9457 fairmontphotopress.com	<b>Karen Luedtke Fisher, Publisher</b> Manager: jeff@fairmontphotopress.com Editor: editor@fairmontphotopress.com Ad Sales: ads@fairmontphotopress.com Info: frontdesk@fairmontphotopress.com Subscription: \$42/1 year; \$24/6 months	



## OBITUARY notices

### Jeanette M. Means, 83



Funeral services for Jeanette M. Means, 83, of Fairmont, were held Monday, January 27th, 2020, at Immanuel Lutheran Church in Fairmont. Burial was held. Tuesday, January 28th, 2020, at Memory Garden Cemetery in Iowa City, IA. Jeanette passed away Saturday morning, January 18th, 2020, at Mayo Clinic Health Systems in Mankato. Lakeview Funeral Home and Cremation Service of Fairmont assisted the family with arrangements.

Jeanette M. (Maas) Means was born May 26th, 1936, in Iowa Township, Iowa County, IA, the daughter of Otto H. and Edna T. (Zuber) Maas. As an infant, she was baptized

into the Lutheran faith June 21st, 1936, at St. Johnson Lutheran Church in Iowa Township and later confirmed March 5th, 1950, at St. John's Lutheran Church in Homestead, IA.

Jeanette grew up on a farm near Homestead, IA, and attended school in Marengo, IA, where she graduated from Marengo High School. She would go on to further her education, attending Paris Academy in Cedar Rapids earning a degree in Cosmetology.

On September 28th, 1958, Jeanette was united in marriage to Eugene J. Finley in Marengo, IA. To this union three children were born, Daniel, Dawn and DeeAnn.

On July 9th, 1983, Jeanette was united in marriage to Elza "Bud" Means in Iowa City, IA, and blessed to welcome Bud's three children, Scott, Candi and Kurt into her life.

Jeanette owned and operated her own beauty salon for over 40 years and loved visiting with and taking care of her clients. She was extremely active in her church both while living in Iowa City and following her move to Fairmont. Jeanette was a member of Prairie Star Quilters where she enjoyed quilting, knitting and crocheting as well as working on many different craft projects. She was driven to find her purpose in life and found great joy in minister-

ing to people through the grief group at Immanuel Lutheran Church in Fairmont. Jeanette had a passion for cooking, even though sometimes her dishes were not quite as tasty as they looked. She cherished spending time with family and friends and will be greatly missed.

Left to cherish her memory are her sister Joyce Plotz; her children, Daniel (Teresa) Finley, Dawn (Brian) Pedersen, DeeAnn Finley, Scott (Mary) Means, Candi (John) Hooton, and Kurt (Judy) Means; grandchildren, Jonathon Finley, Caleb Finley, Bryant Finley, Elizabeth Finley, and Sean Finley; Kaija Pedersen, Joshua Pedersen, Mikaela

Pedersen, Todd (Kellie) Means, Gregory (Mandy) Means, Andy Hooton, Jason (Bill) Hooton-Tuscher, Cody (Chelsey) Means, Adam Means; great-grandchildren, Jacob Means, Brady Means, Adalyn Means and Aiden Means, as well as many other extended family and friends.

Jeanette was preceded in death by her parents, Otto and Edna Maas; husband, Bud Means; and a granddaughter, Danielle Finley.

The family requests memorials be left in Jeanette's name to Immanuel Lutheran Church and the American Diabetes Association.

[lakeviewfuneralhome.net](http://lakeviewfuneralhome.net)

### Janice N. (Hotzler) Hiebert, 91



the church. Janice passed away on Monday evening, January 13, 2020, at Ingleside Memory Care in Fairmont. The Lakeview Funeral Home in Fairmont is assisting the family with arrangements.

Janice was born August 6th, 1928, in Mt. Lake, the daughter of Bernhard (Barney) and Wilhelmina (Minnie) Hotzler. She attended school in Mt. Lake and was proud of playing clarinet in the band. She graduated from Mt. Lake High school in 1946.

Janice married Delevan Hiebert June 20th, 1948, in Bingham Lake Methodist Church. The next three years they lived in the teachers college barracks in Mankato until Del graduated in 1951. During that time, Janice worked in the business office of Overson Lumber Company. They returned to Bingham Lake until 1954 when Del began his career in education at Sioux Valley High School, Sioux Valley, Minnesota. It has been said that behind every successful man is a great woman

and that was so true of Janice. She was Del's greatest supporter, never missing an athletic event, washing and mending jerseys and uniforms, and preparing treats and lunches for his athletes. She worked as a seamstress at home, making clothing for her family and several others who found clothing difficult to purchase. In 1962, she went to work as an accountant for Winchell and Associates in Worthington. She audited financial books for area schools, hospitals, and local businesses. She enjoyed joking with people that she had been to jail because that was where she sat while auditing the county financial records.

In 1967, Del and Janice moved to Ceylon where he began his administrative career in the Ceylon School District. While living in Ceylon, Jan started as the bookkeeper and later became the manager of the grain elevator until her retirement. As manager, she stepped into a role that was primarily for men, but she proved that a woman had a place as lead-

ers in the business world. She "broke the glass ceiling" before there ever was talk about one. Del and Jan made their home in Ceylon until 2014 when due to health concerns they moved to Fairmont.

Jan was a long time member of several civic organizations, in which she held many leadership positions: Nason-Detert American Legion Auxiliary Unit 529 and the Sioux Valley American Legion Auxiliary Unit (including positions at the district level), and the Ceylon Historical Society. Jan's faith in God and belief in the power of prayer was seen as the dementia took so much from her; she still knew and seemed to understand that God was with her. She was a member of the United Methodist Church; serving in many leadership roles, women's organizations, and taught Sunday School in the churches she attended: Bingham Lake, MN; Lake Park, IA; Ceylon, and Fairmont.

Family and friends were the biggest part of her life.

She loved to entertain - hosting family picnics and holiday gatherings for Del's associates, entertaining her workers and friends, traveling with friends and family, planning special events at the Legion, and became known as the "Pie Lady" to many at church and community events. She loved to bake and took pride in her Sour Cream Raisin and Lemon Meringue pies. Jan always had the coffee pot on and a plate of cookies or bars for anyone who happened to stop by.

Left to cherish her memory are her family; daughter, Karen (Claire) Anderson of Columbia, Illinois; son, Thomas (Wendy) of Fountain City, Wisconsin; one grandson, David (Kelly) Anderson of Brandon, South Dakota; three granddaughters Pamela (Brent) Jones of St. Louis, Missouri; Laurie Hiebert of Maple Grove, and Jill Hiebert of Marshfield, Wisconsin; a sister Odette (Janzen) Fast, of Fairmont; great-grandsons, Ethan and Wyatt Anderson of Brandon, South Dakota, and

Maxwell and Christopher Jones of St. Louis; as well as many nieces, nephews, cousins, in-laws, and extended family and friends.

Jan was preceded in death by her husband, Delevan in 2016, her parents; parents-in-law, Frank and Dorothy Hiebert; sister, Gwendolyn Kozisek; brothers Orrin, Owen, Orlo (Buzz) and Gary Hotzler; an infant son at birth, and several extended family members. The family would like to express its sincere thanks and gratitude to Pastor Tony Fink, the nurses and staff at Ingleside Memory Care, UHD hospice care, Lakeview Funeral Home, and the many friends and neighbors who have supported Del and Jan and their family during their many life transitions. Memorial gifts in Jan's memory can be designated to an educational foundation scholarship in memory of Del and Jan and the Fairmont United Methodist Church.

[lakeviewfuneralhome.net](http://lakeviewfuneralhome.net)

### Dorothy J. Simpson, 96



Funeral service for Dorothy J. Simpson, 96, of Fairmont, will be 11:00 a.m., Friday, January 31st, 2020 at First Congregational United Church of Christ in Fairmont. Visitation will be Thursday, January 30th, 2020 from 4 - 6 p.m. at Lakeview Funeral Home in Fairmont and will continue one hour prior to the service at the church. Burial will be at Lakeside Cemetery in Fairmont. Dorothy passed away Friday, January 24th, 2020, at Lakeview Methodist Health Care Center in Fairmont. Lakeview Funeral Home and

Cremation Service in Fairmont is assisting the family with arrangements.

Dorothy Jane (Minar) Simpson was born April 10th, 1923, in St. Paul. She was the daughter of Frank and Mary (Tuma) Minar. Dorothy graduated from Johnson High School in St. Paul in 1941. After high school, she attended Lee's Beauty School in St. Paul and worked as a hairdresser at Newman's Beauty Salon in St. Paul.

On April 20th, 1948, Dorothy was united in marriage to Donald Simpson. The couple moved to the Simpson farm by Iowa Lake where they began their long career of farming. This union was blessed with two children, Thomas and Kathy. Dorothy and Don shared over sixty-two years together before Don passed away October 4th, 2010.

Dorothy was a long-time member of First Congregational United Church of Christ in Fairmont as well as a member of the Merry Makers Club, Extension Club, and the Lake Promenaders Square Dance Club. She loved spending her free time traveling with Don in their

RV, dancing, golfing and reading. Dorothy also enjoyed baking cakes and pies, tending to her flower and vegetable gardens, jigsaw puzzles and bird watching, especially orioles.

The family would like to extend a special "thank you" to the staff at Baywood Health Care, Ingleside, as well as the second floor staff of the Lakeview Methodist Health Care Center for their loving care of Dorothy.

Left to cherish her memory include her daughter, Kathy Simpson (Brad Lundahl) of Chaska, MN; brothers-in-law, Wally Simpson and his wife, Sally, of Chisago City, MN, and Bob Simpson and his wife, Angela, of California; many nieces, nephews, other relatives and friends. Along with her parents, Frank and Mary Minar, Dorothy was preceded in death by her husband, Donald Simpson; son, Thomas Simpson; sisters, Delores Cook-DuBru, and Donna Larson; and brother, Frank Minar, Jr.

Memorials are preferred to First Congregational United Church of Christ or to the donor's choice.

[lakeviewfuneralhome.net](http://lakeviewfuneralhome.net)

### Randall L. Green, 63



Randall L. Green, age 63, of San Diego, CA passed away on January 18, 2020. A Celebration of Life Service will be held Saturday, February 1, 2020 in San Diego.

Randall Lynn Green was born September 24, 1956 to Melvin and Darliss (Werner) in Winnebago, MN. Growing up he attended school at Granada Huntley, participated in and loved all sports. He also helped deliver milk for family owned Greens Rural Foods and pumped gas at the Standard Gas Station.

Randy was a member of the 1975 graduating class from Granada Huntley. Following graduation, he continued his education in Winona, MN where he studied autobody. In 1980 he moved to San Diego, CA where he opened his own body shop, Ocean Beach Auto Body, which he ran for 39 years until his illness forced him to close it.

Randy loved adventure and raced in the Baja 500 and Baja 1000 in Mexico from 2000-2010. He enjoyed going to the Daytona 500 and cheering for Jimmy Johnson and visiting football stadiums throughout the United States. Although he lived in California, he was still an avid Minnesota Vikings fan, and was able to cheer them on with other Viking fans in California. He was especially proud of his collector car, a 1931 Ford Coupe.

Randy didn't let his illness defy him or slow him down. He came back to Minnesota every year to snowmobile and fish with his Granada friends at Nodak Lodge in Bena, MN. He even came back to Grana-

da to his niece's wedding in June of 2019. Family and friends were especially important to Randy, he was always ready to take a trip and make memories. He will be deeply missed by all who loved him and called him friend.

Those left to cherish his memory include his mother, Darliss Green of Granada, MN; brother, Ron (Nina) Green of Daytona Beach, FL; sister, Kathy (Robert) Leet of Granada, MN; nieces: Danielle (Brian) Koehler and Ashley (Jade) Jahnke; nephews: Brett Green, Brandon (Fawn) Green, and Ryan (Aimee) Harmon and their son, Henry; step-niece, Summer (Erik) Mueller and their children Gavin and Preston; other extended family and friends.

Randy was preceded in death by his father, Melvin Green; grandparents: Clyde and Edna Green and Fred and Eleanor Werner; Aunts: Donna Prescher and Dorothy Tompkins; and uncles: Lennie Prescher, Darrel Swingdorf, and Lester Johnson.

[lakeviewfuneralhome.net](http://lakeviewfuneralhome.net)



# The Guy From Just Around the Corner

By Al Batt

My neighbor Crandall stops by.

“How are you doing?” I ask.

“Everything is nearly copacetic. I’ve come to the realization that the only way I’m ever going to get my name in the lights is by changing it to Exit. It was so cold, I cracked a tooth. Frozen coffee on-a-stick was a bad idea. I put my sweat-shirt on backwards this morning and I’ve spent all day going where I’d just been. I’ve started calling my bathroom the gym. That way I can tell my doctor that I go to the gym every day. I just learned that I’m colorblind. That diagnosis came right out of the yellow.”

**Naturally**  
I wanted to go for a walk, but I didn’t want to bother the rooster and hen pheasants foraging under the feeders. They were pleasant pheasants. When they finished breakfast, I became an errant exerciser. Gretel Ehrlich said, “Walking is also an ambulation of mind.”

I heard a red-bellied woodpecker call. It sounded peeved. And why not? It had to deal with winter. A chickadee sounded off, it’s “fee-bee” song triggered by hormones. A downy woodpecker drummed along, hoping to establish a territory. The days grow longer at both ends. That should excite everyone.

People have reported high numbers of blue jays. There was a good mast crop this year in most places. That means there were plenty of acorns for eating and caching. Jays and crows know far more than they let on. A reader from Mora has a varied thrush in the backyard and a column customer in Mankato is being visited by a Carolina wren.

I saw a fox squirrel, clutching an ear of corn, on a No Passing sign. A nice find for the squirrel, which jumped down and ran across the snow. Then it suddenly disappeared into the deep snow like Wile E. Coyote running off a cliff.

I peered through my binoculars at a perched bald eagle. It was a young bird. For some reason, I focused on its bill. It was dark. It was a bi-colored beak that immature bald eagles have. This beak is a dark, blue-black and lighter in color nearer the eye. As juveniles mature, the beak color gets lighter from the base outward, gradually becoming the light yellow of an

adult. Northern eagles are generally larger than their southern brethren. There’s a biological rule of thumb called Bergmann’s Rule which states that, within a species, individuals living in colder climates have larger body sizes than those in warmer climates. Bergmann

found large animals have a lower surface-area-to-volume ratio so they lose heat more slowly in cold climates. Small animals have a higher surface-to-volume ratio and cool off faster when it’s hot.

**From the mailbag**  
Brian Schofield of Fairmont wrote, “I have

seen oddities that nature presents to us: a whitetail doe with antlers, a two-headed painted turtle, but what I have been seeing the last week is something I haven’t even heard about before; a ringneck pheasant hen with wattles. For the past week

this hen has been haunting our bird and squirrel feeders gleaning scraps that have fallen to the ground. This little hen has provided us hours of entertainment and we have supplemented her foraging with shelled corn to assist her survival through

the winter.”  
I’ve not seen a hen like that, Brian, but some older females or those with damaged ovaries may assume rooster-like characteristics. I found this

**Continued on page 7**



## FAIRMONT PUBLIC NOTICE

Notice is hereby given that the Fairmont City Council will meet at the City Hall Council Chambers, 100 Downtown Plaza, Fairmont, MN 56031 at 5:30 p.m. on Monday, February 10, 2020 to conduct a Public Hearing to review the following item:

Micky, Kimberly, and Adam Garbers

924 Lake Avenue (Parcel IDs 230390650, 230390700, 230390750)

Rezoning property from Heavy Industrial (I-2) to General Business (B-3)

Persons who desire to be heard in reference to the above will be heard at this meeting. Written comments can also be submitted to Fairmont City Hall, attention Patricia Monsen, 100 Downtown Plaza, Fairmont, MN 56031.

Patricia Monsen  
City Clerk

*Published in the Fairmont Photo Press  
January 29, 2020*

## 2020 Auction Calendar

- March 21st** **McGregor - 1st Auction**  
Starting at 9:30 am  
Coins, toy tractors, Collectibles & Household  
**Auction Site:** 116 N 4th Street –  
Estherville Iowa (One block North of Ace Hardware)
- March 28th** **McGregor - 2nd Auction**  
Starting at 9:30 am  
Antiques, Collectibles, Large Collector Tractors  
& Machinery **Auction Site:** 1950 Hwy 32 1950  
410th Avenue, Estherville Iowa
- April 18th** **84th Annual Ceylon Community Day Auction**  
Starting at 8:00 am  
**Auction Site:** Ceylon MN
- May 16th** **Doug & Jennette Lietz**  
Starting at 9:30 am  
Very Large Collection of Sports Cards, Nascar,  
Toy Tractors, Antique Furniture & much more.  
**Auction Site:** 116 N 4th Street – Estherville  
IOWA (One block North of Ace Hardware)
- June 9th** **Annual Armstrong Spring Consignment Auction**  
Starting at 9:00 am  
**Auction Site:** West side of Hwy 9 Armstrong IA
- June 20th** **Farm Retirement Auction**  
Starting at 9:30am  
**Auction Site:** South Martin County MN
- June 27th** **Marvin & Lola Talledge**  
Starting at 9:30 am  
Large selection of single cylinder engines,  
Maytag engines, antiques & collectibles, and  
much more. **Auction Site:** 1662 150th St.  
Fairmont MN.
- July 25th** **2nd Annual Ceylon Summer Community Day Auction**  
Starting at 8:00am  
**Auction Site:** Ceylon MN
- August 11th** **Annual Armstrong Late Summer Farm Machinery Consignment Auction**  
Starting at 9:00am  
**Auction Site:** West side of Armstrong IA on  
Hwy 9.

## Howell Real Estate & Auction

220 CENTRAL AVE. ESTHERVILLE IA 712-362-4844 OFFICE

Mark Howell 712-260-9690 - Larry Howell 712-260-9693  
howell9690@gmail.com - Gary Helmers 507-236-2921

[www.howellrealestateandauction.com](http://www.howellrealestateandauction.com)

## FAIRMONT PUBLIC NOTICE

OFFICIAL PUBLICATION

NOTICE OF HEARING

TO WHOM IT MAY CONCERN:

NOTICE IS HEREBY GIVEN that the City Council of the City of Fairmont will hold a public hearing to consider proposed Ordinance No. 2020-01.

**ORDINANCE NO. 2020-01**

**AN ORDINANCE AMENDING ORDINANCE NO. 2019-01 OF THE CITY OF FAIRMONT, RELATING TO THE SOFTENED WATER SERVICE RATES.**

WHEREAS, the city code requires that municipal utilities be provided to consumers at a rate based upon the amount of water used or consumed, and;

WHEREAS, it will be necessary to amend the current softened water rates to collect the necessary funds to provide for current and future capital expenditures, and;

NOW THEREFORE, BE IT ORDAINED, by the City Council of the City of Fairmont that Ordinance No. 2019-01 be amended to establish the following rates:

Service Type - Residential :	( Cost per 100 cubic feet )
First 2,000 cubic feet per month	\$5.51
Excess Consumption - Cubic feet per month	\$6.10
Monthly customer charge (In addition to minimum charge)	\$16.98
Minimum charge per month	\$8.55
Water Infrastructure Charge per month	\$4.45

Service Type - Commercial :	( Cost per 100 cubic feet )
First 120,000 - Cubic feet per month	\$4.60
Excess Consumption - Cubic feet per month	\$4.73
Monthly customer charge (In addition to minimum charge)	\$32.40
Minimum charge per month	\$8.55
Water Infrastructure Charge per month	\$4.45

Service Type - Industrial :	(Cost per 100 cubic feet )
( > 250,000 cubic feet per month )	
First 1,300,000 - Cubic feet per month	\$3.65
Excess Consumption - Cubic feet per month	\$3.77
Monthly customer charge (In addition to minimum charge)	\$32.40
Minimum charge per month	\$8.55
Infrastructure Charge per month	\$4.45

In addition to the above charges the following will be charged per month:

- \$1.00 Lake Restoration Charge to fund water quality improvement of Fairmont Lakes.
- \$2.00 City Wide Cleanup Charge that includes \$1.50 for City Wide Clean Up and \$0.50 for Tree Dump Maintenance.

Said rates shall be effective March 1, 2020.

**You are further notified** said hearing will be held in the **City Council Chambers of City Hall**, 100 Downtown Plaza, Fairmont, Minnesota on Monday, February 10, 2020, at 5:30 p.m.

BY ORDER OF THE CITY OF FAIRMONT

/s/ Patricia J. Monsen

Patricia J. Monsen, City Clerk

*Published in the Fairmont Photo Press  
January 29, 2020*





# Martin Soil & Water Conservation Update

[martinswcd.net](http://martinswcd.net)

923 North State St • Suite 110 • Fairmont, MN



Vol. 39 No. 1 | Martin Soil & Water 2020 Progress Report | Supplement to the Photo Press

## Martin County Outstanding Conservationist

Krusemark Farms has been named the Martin County Outstanding Conservationist of 2019. Krusemark Farms is a Minnesota Agricultural



*Pictured: Left to right, Caleb, Rochelle, Brad, AJ.*

Water Quality Certified operation. Brad, Rochelle, AJ and Caleb are great advocates of water qual-

ity and soil health. The Krusemarks utilize a wide array of best management practices on their 1,700 acres of cropland and are passionate about the use of cover crops to improve soil health. They utilize cover crops as cattle feed for their rotationally grazed cow-calf operation of 150 head. The Krusemarks are improving soil health on their cropland through the use of cover crops, strip tillage and crop rotation.

Rochelle is on the United Soybean Board, Soy Nutrition Institute, US Farm Ranch Alliance, State Soy-

bean Research and Promotion Council and is the President of the Martin County Corn and Soybean Growers Group. Con-

gratulations to the Krusemarks and thank you for being such great stewards of the land.



*Picture: Congratulations to Krusemark Farms for a well deserved designation as the 2019 Martin County Outstanding Conservationist*

## White Spruce Tree

Our featured tree this year is the White Spruce Tree. This particular tree is one of the favorites for the purpose of its many uses. This conifer type tree can grow to a height of 40 to 60 feet, and occasionally 100 feet. White Spruce can live up to a couple hundred years as well. Its needles are pale bluish when young, and dark bluish green when mature. It produces a slender cone with a length of about 2 inches when mature. The cones drop during winter

after opening and shedding seeds. White spruce thrives on dry soils similar to other pine, and on moist soils and in swamps with balsam fir and tamarack and also found associated with hardwoods. The white spruce is well known for windbreaks and shelterbelts as well as Christmas Trees. Other uses include lumber for general construction, furniture parts, canoe paddles, and sounding boards for musical instruments.



## 2019 Fall/Winter Conservation Update... Martin County Conservation Club, Inc.

The seventh annual Martin County Conservation Club's Conservation banquet



was held in Northrop's Martin Luther High School's gymnasium on March 2, 2019. This was after a week's delay due to blizzard conditions the week before. Attendance was down a little from years before, but still very comparable in



net proceeds realized. Monies from these annual banquets stay in Martin County and are used to help the Fairmont and Truman high school trapshooting teams, Fairmont Lakes Foundation, Let's Go Fishing for Seniors, Dollars for Scholars,

Environmental Day for county fifth graders, and financial matches for projects with the MSWCD and the DNR. Our eighth annual fundraising banquet is planned for February 22, 2020 at the Martin Luther High School in Northrop



with doors opening at 5 pm. Hope to see you there for a night of fun.

We gave away 25 wood duck, 18 bluebird, and 30 wren houses to the public in early April and another 30 wren houses to first graders at the Truman and GHEC schools. We are always in need of exterior latex paint in lighter colors if you have any usable part cans or would like to donate a full can, call Steve Maurice at (507)238-4073. Speaking of birdhouses, did you remember to clean out the old nests from your wren, bluebird, purple martin and wood duck houses? If not, anytime before April 1st is a good time. Be sure to add about

4" of wood shavings or chips to your wood duck houses as they don't carry materials in.

This past May the Club stocked 400 channel catfish into North Silver Lake with the goal of reducing the overabundant populations of bullheads and stunted perch. Since 2014 we have stocked walleye fry, sunfish, crappie, bass, perch and northern pike fingerlings into the lake. The funding for these stockings totaled close to \$6,000 and came from donations by the lake residents and our club. There should be an abundance of nice fish in the lake now and nothing recruits new members like good fishing!

The Center Creek



Wildlife Management Area (Findley Unit) we purchased and donated to the DNR a year ago was seeded to native prairie grasses and flowers in the late winter and spring. In a couple of years it will

be a flourishing restored prairie habitat for ducks, pheasants and deer. In September another 240 acres was dedicated in the northeast corner of the same WMA. It was donated by Tom and Jean Maday to Pheasants Forever earlier in the year and will eventually become another DNR property in this complex. Many thanks to the Madays for this generous donation to wildlife and the public.

The Martin County Conservation Club meets the second Tuesday of the month at 7 pm. April through October meetings are at the Club's park on the south end of N. Silver Lake and at Tami's on the Ave from November through March. All members and the public are welcome to attend. Meetings are usually only one hour. Memberships are available at meetings and at Sommer Outdoors for \$20/year. The members park is available to all members and includes use of the shelter (by reservation), boat landing and dock and a playground for children.

New this year is our web page at [www.martincountyconservation.org](http://www.martincountyconservation.org). Also our Facebook page at: [www.facebook.com/martincountyconservationclub](https://www.facebook.com/martincountyconservationclub).

**2020 Martin Soil And Water  
Conservation District**

**ANNUAL OPEN HOUSE  
& CONSERVATION  
TREE ORDER DAYS**

**COFFEE, COOKIES AND  
ROLLS WILL BE SERVED**

**Friday, January 31<sup>st</sup>  
8 a.m. - 4:30 p.m.  
Saturday, February 1<sup>st</sup>  
8 a.m. - 12 noon**



## What is a Watershed, and Why Should I Care?

*By Hannah Neusch, Blue Earth River Watershed Conservation Planner*

A watershed is an area of land that feeds all the water running under it and draining off of it into a body of water. It combines with other watersheds to form a network of rivers and streams that progressively drain into larger water areas. Topogra-

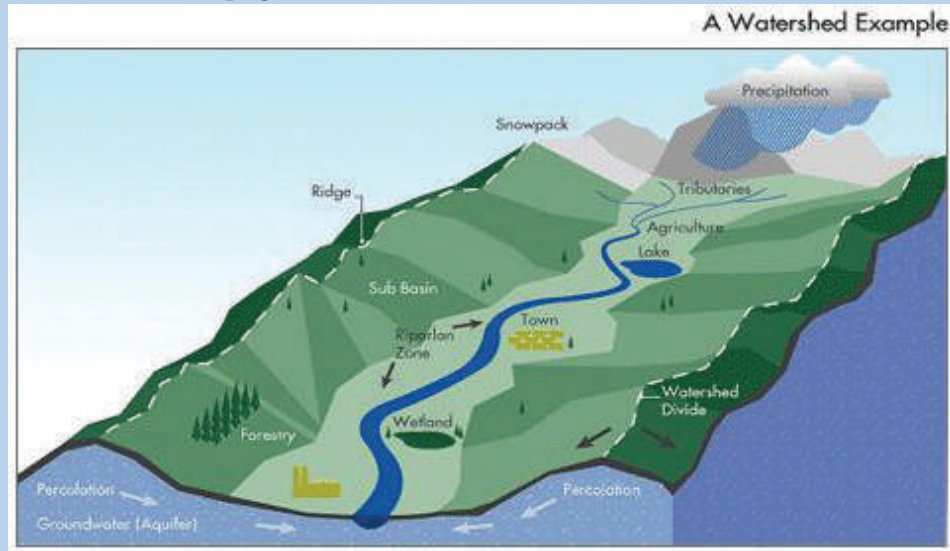
through absorption by plants, evaporation and consumption by humans. These factors also depend on the area; the clay-like soil of Georgia will not absorb as much water as the loose soil of Kansas.

Now that you know what watersheds are,

picks up enough soil over time, the land along that stream will become unstable and eventually erode away. If you live along a river bank, this could mean losing your backyard. For wildlife that lives in this area, it means a loss of their habitat.

menting watershed protection programs around the globe.

The Environmental Protection Agency also developed a program to help watersheds in 1996. The watershed approach is an environmental management program designed to address the declining watershed health by combining public and private efforts to address the worst contamination issues. Groups in specific watersheds are encouraged to work together within the community to balance preventing pollution and improving the environment with the community's economic development. These watershed teams, as they're called, monitor the watershed and participate in cleanup and restoration. However, you don't need the government's assistance to get involved. You can help protect our watersheds all by yourself. The fewer pollutants that seep into the soil, the cleaner our watershed and water supply will be. For example, you can recycle your used antifreeze and motor oil instead of dumping them. Trash, grass clippings, leaves, lawn fertilizer, and dog poop that ends up in storm drains are just as likely to disturb our lakes and streams, so clean up after your landscaping project and when you take Fido for that walk, bring along a bag.



phy determines where and how water flows. Ridge tops surrounding a body of water determine the boundary of a watershed. Imagine turning an open umbrella upside down in the rain. Rain that hits anywhere within the umbrella's surface area would go to the bottom at the center of the umbrella. Any rain that didn't hit the umbrella would fall to the ground. The umbrella is like a watershed; it collects everything that falls into it. Imagine now that there are three groups of umbrellas. One group of large umbrellas (the basin) sits on the ground, while another group of smaller umbrellas (watersheds) floats above them, with a hole in the bottom of each. Yet another group of even smaller umbrellas (catchments) floats above those, also with a hole in the bottom of each. If the rain was caught in the top level of umbrellas, it would drain into the larger umbrellas below, which would drain into the largest umbrellas below them. Of course, this is a simple model. Water does not simply hit the land and roll off it into a stream. Rainwater is lost

why should their health matter to you? Watersheds directly affect water quality, whether it's for drinking or recreation. For example, algae blooms from fertilizer runoff draining into water harm watershed health, as do mercury and lead seeping into the water supply due to pollution. As states and cities try to find new sources of uncontaminated drinking water, keeping watersheds healthy becomes increasingly vital to finding clean water. Unhealthy watersheds also affect wildlife. The polluted water supply that results can become harmful to humans. Aquatic life quickly suffers the effects of watershed pollution, while new pollutants introduced into ecosystems alter wildlife habitats. This reduces biodiversity by eliminating some species and introducing new, invasive ones that destroy the native species. That, in turn, can affect the food chain, from microbial organisms that feed birds and animals to fish that feed humans. The threat of erosion also exists. Water flowing to a stream picks up topsoil along the way. If the water



*Martin County SWCD Board: Front row seated left to right, Larry Cowing, Tyler Ask. Back row left to right, Linda Meschke, Judy Beckman, Steve Flohrs (County Commissioner Liaison), Clair Schmidt Jr.*

## SWCD Seeding Program

If you are enrolling into a conservation program such as CRP or CREP, or if you just need to do some grass seeding, the Martin County SWCD can help you out. We have a 10 foot grass drill, along with a 6 foot no-till drill. These drills work well for grassed waterways, CRP and CREP sites, as well as filter-strips along watercourses. We can also custom seed your site with our broadcast seeder, which will handle any size site you have. The Martin SWCD can also order the seed that best fits your site. If you are interested in renting one of our drills, or contracting with the SWCD to do custom seeding, you can stop in to our office, or call us at 507-235-6680. Our 2018 rates are as follows:



**Drill Rental Rates:**  
**In Martin County: \$8.00/Acre with a \$50.00 minimum**  
**Out of County: \$10.00/Acre with a \$75.00 minimum**

# MIDLAND GARAGE DOORS



*With precision manufacturing of each component by experienced craftsmen, you'll be assured of quality service for years to come.*

**Available in several easily coordinated colors and  
you may choose from a variety of door lites.**

*Whether your needs are residential or commercial, all our steel doors provide the best all around value when appearance, security, durability and low maintenance are required.*

**At Midwest Garage Doors we take great pride in our workmanship and attention to detail. Pride and quality that's reflected in every one of our doors. FREE ESTIMATES**



Be confident. You've chosen the best!  
**Limited Residential 10 Year Warranty.**  
**Limited Residential Lifetime Warranty.**  
 (Consult dealer for details)

**Midwest Garage Doors  
of Fairmont Inc.**

**507-238-9919**

## Your farm tax expert.



**Erpelding • Voigt • Co., LLP**  
CERTIFIED PUBLIC ACCOUNTANTS

**507-235-3377**

1295 Hwy 15 South  
Fairmont, MN 56031

## WE OFFER:

- Tax Planning & Preparation
- Corporations/Partnerships
- Certified QuickBooks ProAdvisor
- Financial Statements
- Personal Financial Planning

**FREE complimentary review of tax situations & returns**

**www.evcpa.com**

**We believe in you.**  
Member FDIC. And the community.

# LOAN SPECIALISTS

## LOCAL AND TRUSTED



Andy Noll, Dan Driscoll and Chris Pierce are your local experts in commercial and agricultural lending. Whatever your needs you can turn to Andy, Dan or Chris with confidence that they'll work for you.

\*Fees for Bill Pay may apply.  
Text & data rates may apply.  
Must be enrolled for Online Banking.

Download our FF&M Mobile App!

114 S. Park St. | Fairmont, MN  
607-235-5556 | [www.ffmbank.com](http://www.ffmbank.com)





# Fox Lake Conservation League Newsletter

In June we had our 33rd Annual FoxMasters Fishing Tournament. It was a great day of fishing. This year we switched back to weighing fish instead of the point system we had been doing. We had 20 teams fish this year. We are hoping to bring that number up closer to 50 for next year. The cost is only \$55 for the team to get in. You can get more information at [www.foxlakeconservation.com](http://www.foxlakeconservation.com).

Everett Park is really busy this summer. It is great to see people from around the area coming out and camping locally and enjoy the fishing on our pier. We are currently looking at trying to upgrade our playground equipment. If you know of any school for community that is looking at getting rid of equipment, please let us know. Everett Park camping is on a first come basis and has a full shower house and dump station. We also have a shelter house, which can be rented for gatherings.

Our biggest fundraiser for the year is our Fall Banquet. This year's banquet will be on Saturday September 19th. We limit this event to the first 145 people to sign up. You can find the details on our website.

We will be hosting our annual Firearm Safety Training again in September. Each year we get 12-20 kids to enroll in this course. We teach this on Tuesday/Thursdays in September.

We will also be hosting a youth waterfowl hunt

again this year. We get around 12 kids each year to sign up through the DNR and Ducks Unlimited. We meet the kids on Friday night and introduce them to the guide that will be taking them out the next morning. Then we meet up around 5:00 AM the next morning for breakfast and head out to the slough. The guide sets out decoys and helps call in the birds. The kids do all the shooting. It is a great time for the mentors to get to know the kids and show them the sport that they love.

One of our big partners is the MCW FFA Chapter. We work closely with them on many projects. One of our newest projects is a native seed planting. We were able to purchase 6 acres of land to the west of the MCW Football Field. With the help of the MCW FFA and Rich Perinne we plan on planting native grasses and wildflowers on this property. After these plants have matured, we will be able to harvest the seed on this land and use it to help with plantings on the DNR lands or other CRP plantings.

We also work very close with the Windom DNR office. Throughout the year, we apply for grants that are used to get work done on the WMAs in our area. When we apply, we are contributing \$5000 of local money. With this \$5000 we are getting another \$50,000 from the grant programs. This money is used to help with grassland and wetland improvements.

Currently we have done around 4 of these grants.

Another way that the FLCL helps the community is through our charitable gambling. We have pull-tabs at the Sherburn Liquor Store, Fox Lake Golf Course, Korte's Bar & Grill in Welcome, Legends II in Ceylon, Old Northrop Bar, GhostTown Tavern, The Still in Dunnell and Granada Bar. With our charitable gambling, we donate a minimum 70% of our funds towards wildlife habitat and conservation. We are also a big supporter of programs within the MCW school district.

This spring we are doing a Big Bucks Cash Raffle. Tickets are \$20 each. We will be giving away \$10,000, 2-\$1000, 4-\$500 winners. See any of our board of directors, Welcome Legion and Amborn Lumber for tickets. We will give these prizes away on April 24th at the Sherburn Community Hall

All members are welcome to come to the Annual Meeting. This year our Annual Meeting will be held April 24th, 7:00 PM at the Sherburn Community Hall.

To be a member of the Fox Lake Conservation League you mail \$10 to PO Box 212, Sherburn MN 56171. Please have your name and address with it. You can keep up to date with the FLCL by joining us at our monthly meetings the second Tuesday of every month at 7pm. Between the months of May through September, they are held in the shelter house of Everett Park, and October through April at the Welcome Legion.

2020 Spring Tree Order Form

Species	Price per Bundle	Number of Bundles	Cost
<b>Bare Root Conifers: 8" - 15" (Bundles of 25)</b>			
Cedar, Eastern Red	\$ 42.00		
Pine, Red	\$ 35.00		
Pine, White	\$ 35.00		
Spruce, Black Hills	\$ 40.00		
Spruce, Colorado	\$ 40.00		
Spruce, White	\$ 35.00		
<b>Bare Root Small Trees: 12" - 36" (Bundles of 25)</b>			
Cherry, Black	\$ 30.00		
Chokecherry, Common	\$ 30.00		
Crab, Red Splendor	\$ 30.00		
Plum, American	\$ 30.00		
Canada Red Cherry	\$ 40.00		
<b>Bare Root Tall Trees: 12" - 36" (Bundles of 25)</b>			
Cottonwood, Common	\$ 32.00		
Maple, Silver	\$ 30.00		
Maple, Sugar	\$ 33.00		
Oak, Bur	\$ 28.00		
Poplar, Norway	\$ 32.00		
Walnut, Black	\$ 32.00		
<b>Bare Root Shrubs: 12" - 36" (Bundles of 25)</b>			
Dogwood, Gray	\$ 25.00		
Dogwood, Red Osier	\$ 25.00		
Dogwood, Silky	\$ 25.00		
Chokeberry, Black	\$ 30.00		
Nanking Cherry	\$ 25.00		
Lilac, Common	\$ 25.00		
Nannyberry	\$ 30.00		
<b>Special Orders</b>			
<b>For Office Use Only</b>			
Date Called			
Date Trees Picked Up			

Name  
Address  
City/State/Zip  
Phone  
Township                      Section

Mail Order and Payment to: Martin SWCD  
923 North State St, Ste 110, Fairmont, MN 56031  
(507) 235-6680 or visit [www.martinswcd.net](http://www.martinswcd.net)

Species	Price per Tree	Number of Trees	Cost
<b>Potted Conifers: 9" - 15"</b> Individual orders			
Cedar, Northern White	\$ 12.00		
Pine, White	\$ 12.00		
Pine, Ponderosa	\$ 12.00		
Spruce, Black Hills	\$ 12.00		
Spruce, Colorado	\$ 12.00		
Spruce, Norway	\$ 12.00		
Spruce, White	\$ 12.00		
<b>Planting Charges</b> cost/tree      Number      Cost			
<b>Minimum Charge</b>			
Bare Root Planting	\$100.00		
Potted Planting	\$1.50		
<b>Miscellaneous</b>			
Mats - 4"x4'/each	\$ 3.00		
Mats - 4"x300' rolls/each	\$ 150.00		
Tubes - Bulk/foot	\$ 1.50		

The cost of these trees does not warrant free replacement and the District offers no guarantee of survival. These trees shall be used for conservation purposes only. Price and size are subject to change without notice due to stock availability. Any order under \$100 shall be paid when placing an order. Any balance shall be paid when trees are received. Upon signing below purchaser understands these conditions. Special orders must be prepaid at time of order.

Signature \_\_\_\_\_ Date \_\_\_\_\_

Tree Cost		
Miscellaneous Costs		
Sales Tax (7.375%)		
Planting (no tax)		
Total Cost		
Balance Due		

Down Payment Receipt # \_\_\_\_\_  
Final Payment Receipt # \_\_\_\_\_  
Check    Cash    (circle one)

## Fairmont Lakes Foundation, Inc - Update By Michael J. Katzenmeyer, Chair

2020 arrived with renewed expectations for Fairmont Lakes Foundation, Inc. and projects scheduled for our watershed...and specifically that part of our watershed which has grown increasingly more polluted and drains into Hall Lake. We have been involved with staff from the City of Fairmont, Martin Soil and Water, and the Department of Natural Resources, for the better part of five years, to design an improvement plan for a Dutch Creek. The concerns leading to that plan are ways to curb the run-off at high water times carrying nitrates, phosphates and other assorted pollutants into

our reservoir, restoring and protecting the spawning habitat, and addressing the stagnation, at low water times, at the mouth of the creek caused by the silt build-up from the erosive action of years of uncontrolled high water.

No projects of this magnitude are budgeted for and must find opportunities for financial support. The City of Fairmont, with the support of the aforementioned partners, was named a recipient of a \$1.4 (approximately) million grant from the Lessard-Sams Outdoor Heritage Council for creating improvements to Dutch Creek upstream and west of Hall Lake.

Fairmont Lakes Foundation, Inc. was named a recipient of a \$200,000 grant from The Schmeeckle Foundation, which will be utilized in completing the restoration of Dutch Creek at the mouth where it enters Hall Lake.

The last update we can give you is that the target start date will be late summer, accommodated by lower water levels, or early fall. We hope you are as excited as we are in anticipating this improvement for our reservoir.

Let's take a look back at one of last year's fantastic finishing projects. The Department of Natural Resources approved the financing and completed a fish ladder between Amber Lake and Hall Lake. The project included removing the remnants of the old fish trap, which had been in disrepair and unused for years. Then the construction crew, complete with heavy equipment, was on site for approximately two weeks placing boulders and rocks in the channel bed. In doing so, they created 30 foot pools, lowering each approximately 6 inches, until they reached the culvert between Amber Lake and Hall Lake. The result was instantaneous! They cleaned up a neglected channel, cre-

Continued on page 4S

Low-RATE Ag Loans

3.00%

FOR IMPROVING WATER QUALITY!

Welcome State Bank is pleased to be chosen by Martin County as the only local lender for minimum interest loans for your efforts to improve water quality through:

- ☐ Erosion Control Practices
- ☐ Conservation Tillage Equipment
- ☐ Animal Manure Management Practices

(Certain technical and financial requirements apply.)

Pick up an application packet at the Martin County Soil & Water Conservation District Office: 923 N. State St., Fairmont, MN 56031

WELCOME

State Bank

111 GUIDE STREET NORTH WELCOME, MN 56181 507-728-8251

The Martin County Agricultural Best Management Practices Loan Program, administered by the MN Department of Agriculture, was created by the 1994 Minnesota Legislature and is funded with federal Environmental Protection Agency money. Applicants should call the SWCD/NRCS office at 235-6680 to make an appointment.

EQUAL HOUSING LENDER

Member FDIC

I-90 Well Service

Fairmont • 238-1305

• Farm • Home • Municipal •

• Well Drilling • Well Repair • Complete Water Systems • Pump Repair • Wall Reconditioning & Sealing • Horizontal & Vertical Drilling • Geo-Thermal Heat Loops • Irrigation Wells

[www.wellsandseptics.com](http://www.wellsandseptics.com)

EMERGENCY SERVICE



NASCO

EQUIPMENT

1025 Bixby Road Fairmont, MN (507) 235-9506

Owatonna, MN (507) 451-3448

[nascoequip.com](http://nascoequip.com)



GSI

BEHLEN





# Review of 2019 weather for Martin County

Pete Boulay MNDNR State Climatology Office

2019 was the wettest year on record statewide with 35.51 inches, edging out 1977 with 33.93 inches. The annual precipitation total at Sherburn was 42.91 inches. This is about ten inches above normal for 2019, or a surplus of 35%. Sherburn was 44.13 inches for 2018. Normal annual precipitation for Martin County ranges from about 30 inches in Trimont to nearly 33 inches in the Fairmont area.

Cold and stormy conditions from the end of January through April contributed to seasonal snowfall totals of 60 to 85 inches across south central Minnesota, generally 40 to 70% above 1981-2010 averages. The first four months of the year were over four degrees F below

average. February had the coldest departure with 11 degrees F below normal. There was a memorable blizzard on February 22-24. The heaviest snow missed Martin County, but blizzard conditions stuck much of southern Minnesota.

Winter persisted into April, with more snow in the middle of the month. The month started off very chilly, with some mild episodes in the second half of April. May tended to be cool with spring crop planting falling well behind. Lake ice out ran about a week behind the median. The ice on Budd Lake left on April 3, five days behind the median. May was the wettest month of the year in Martin County with a countywide average of 7.8 inches.

June turned drier and warmer, with below normal precipitation. The Martin County average precipitation for June was 2.83 inches. Temperatures for June averaged close to normal. July and August had close to normal precipitation, with Martin County escaping the worst of the summer rains. August was drier statewide, with Martin County receiving near normal precipitation.

Autumn turned wet again. Precipitation for September and October were both well above normal, not only for Martin County, but for most of Minnesota. September was quite mild, with temperatures finishing from three to five degrees above normal. The very last day of September was exceptionally muggy with highs in the mid-80s and dew point temperatures in the low 70s. October turned cool with

average temperatures about three degrees below normal. There were approximately 52 tornadoes reported in Minnesota in 2019. Nearly all were of the weak variety. There was one tornado reported in Martin County on August 10, a weak one about three miles southeast of the Fairmont Airport.

Winter ended late for

2018-19 and started early for 2019-20 with a very cold start to November. Lakes began to freeze up with one of the earliest ice in dates on record, but a mild spell in the middle of November thawed out many lakes. Lakes in Martin County that froze over on November 7 melted by mid-month and refroze on December 2. De-

cember seesawed between arctic and mild episodes and finished about three degrees above normal. Soils gradually froze up in early November then thawed and what frost remained was shallow in southern Minnesota, generally six inches or less under sod. Some places were free of frost in late December.

CTRS	Observer	Aux ID	Net	Apr19	May19	Jun19	Jul19	Aug19	Sep19
46 101N 30W 13	CROP PRO	MT996	SWCD	4.17	7.53	4.66	3.53	4.44	5.75
46 101N 31W 2	EVERSMAN		SWCD	4.00	8.24	3.60	3.28	3.45	4.51
46 101N 32W 25	BENTS MA	MT992	SWCD	4.81	9.57	4.15	4.42	3.88	4.60
46 101N 32W 26	SCHMIDTK		SWCD	3.65	8.75	3.73	4.15	3.65	3.93
46 101N 33W 6	SWANSN D		SWCD	4.39+	8.76	2.13	4.66+	2.21	5.07+
46 102N 30W 5	MRT SWCD	MT988	SWCD	3.81	9.23	1.39	5.94	3.47	4.23
46 102N 30W 25	LUCKOW G	MT987	SWCD	4.21	8.08	3.54	3.68	4.28	6.35
46 102N 32W 7	ZEHMS RI	MT985	SWCD	4.22	8.13	2.10	3.83	2.56	5.94
46 102N 33W 22	SHERBURN	217602	NWS	3.43+	7.41+	2.70+	4.48+	2.81+	4.77+
46 103N 29W 5	ROBERTSD	MT984	SWCD	4.57	6.23	2.86	4.44	5.10	4.49
46 103N 30W 4	TOOTHAKE	MT983	SWCD	3.69	5.91	2.03	5.32	4.08	4.23
46 104N 29W 8	PETERSEN		SWCD	4.24	6.82	2.53	6.53	3.11	5.78
46 104N 30W 31	SANDERSF	MT977	SWCD	4.29	8.03	2.07	4.80	4.62	5.17
46 104N 32W 32	TRI WSTE		SWCD	4.06	6.29	2.22	4.38	2.39	5.36
46 104N 33W 6	WILSONGA	MT976	SWCD	4.19	8.00	2.71	4.73	2.39	4.75

## USDA Safety Net Program Enrollment Opens for 2019 and 2020

Agricultural producers now can enroll in the Agriculture Risk Coverage (ARC) and Price Loss Coverage (PLC) programs – two U.S. Department of Agriculture (USDA) safety net programs – for the 2019 and 2020 crop year.

ARC provides income support payments on historical base acres when actual crop revenue declines below a specified guaranteed level. PLC provides income support payments on historical base acres when the effective price for a covered commodity falls below its reference price. The 2018 Farm Bill reauthorized and updated both programs.

Signup for the 2019 crop year closes **March 15, 2020**, while signup for the 2020 crop year closes **June 30, 2020**. Producers who have not yet enrolled for 2019 can enroll for both 2019 and 2020 during the same visit to an FSA county office.

ARC and PLC have options for the farm operator who is actively farming the land as well as the owner of the land. *Farm owners also have a one-time opportunity to update PLC payment yields beginning with crop year 2020. If the farm owner and producer visit the FSA county office together,*

*FSA can also update yield information during that visit.*

Covered commodities include barley, canola, large and small chickpeas, corn, crambe, flaxseed, grain sorghum, lentils, mustard seed, oats, peanuts, dry peas, rapeseed, long grain rice, medium and short grain rice, safflower seed, seed cotton, sesame, soybeans, sunflower seed and wheat.

**Update Your Records**  
FSA is cleaning up our producer record database. If you have any unreported changes of address, zip code, phone number, email address or an incorrect name or business name on file they need to be reported to our office. Changes in your farm operation, like the addition of a farm by lease or purchase, need to be reported to our office as well. Producers participating in FSA and NRCS programs are required to timely report changes in their farming operation to the County Committee in writing and update their CCC-902 Farm Operating Plan.

If you have any updates or corrections, please call your local FSA office to update your records.

**USDA Offers Disaster Assistance for Minne-**

### sota Farmers Hurt by 2018, 2019 Disasters

Agricultural producers affected by natural disasters in 2018 and 2019, can apply through the Wildfire and Hurricane Indemnity Program Plus (WHIP+). Sign-up for this U.S. Department of Agriculture (USDA) program began Sept. 11.

**WHIP+ Eligibility**  
WHIP+ will be available for eligible producers who have suffered eligible losses of certain crops, trees, bushes or vines in counties with a Presidential Emergency Disaster Declaration or a Secretarial Disaster Designation (primary counties only). Disaster losses must have been a result of hurricanes, floods, tornadoes, typhoons, volcanic activity, snowstorms or wildfires that occurred in 2018 or 2019. Also, producers in counties that did not receive a disaster declaration or designation may still apply for WHIP+ but must provide supporting documentation to establish that the crops were directly affected by a qualifying disaster loss.

A list of counties that received qualifying di-

saster declarations and designations is available at [farmers.gov/recover/whip-plus](https://farmers.gov/recover/whip-plus). Because grazing and livestock losses, other than milk losses, are covered by other disaster recovery programs offered through FSA, those losses are not eligible for WHIP+.

Eligible crops include those for which federal crop insurance or Noninsured Crop Disaster Assistance Program (NAP) coverage is available, excluding crops intended for grazing. A list of crops covered by crop insurance is available through USDA's Risk Management Agency (RMA) Actuarial Information Browser at [webapp.rma.usda.gov/apps/actuarialinformationbrowser](https://webapp.rma.usda.gov/apps/actuarialinformationbrowser).

The WHIP+ payment factor ranges from 75 percent to 95 percent, depending on the level of crop insurance coverage or NAP coverage that a producer obtained for the crop. Producers who did not insure their crops in 2018 or 2019 will receive 70 percent of the expected value of the crop. Insured crops (either crop insurance or NAP coverage) will receive between 75 percent and 95 percent of expected value; those who purchased the

highest levels of coverage will receive 95-percent of the expected value.

At the time of sign-up, producers will be asked to provide verifiable and reliable production re-

cords. If a producer is unable to provide production records, WHIP+ payments will be deter-

**Continued on page 55**

### Continued from page 35

ated two-way transportation for spawning, and for a special touch...provided the sound of trickling water flowing over the Amber Lake Dam, while simultaneously aerating the water as it flows. Have you seen it? The Department of Natural Resources turned the finished project over to the City of Fairmont last fall.

Turning back to 2020, we look toward continuing with projects to enhance, restore, and protect our lakes. In order to continue to take on projects, while exploring new challenges, we are only as sound as our financial backing. Our membership contributions are important, our benevolent business

community has been fantastic, and our fundraising fishing tournaments not only lend financial assistance, but provide recreational recognition of the total value of our greatest asset...Fairmont's Chain of Lakes.

We will continue to hold lakes clean-up sessions. We will continue to strive to educate lakeshore owners about the virtues of re-establishing shore land vegetation to help filter our water and provide habitat. We will continue to partner with Martin County Conservation Club, Inc. and Pheasants Forever to provide programs for advocates young and old to protect our recreational use of our resources.

Will you join us?

AG industrial






Hot and Cold  
High Pressure Washers  
Sales and Service

David Hill  
Owner/Operator  
Certified Technician

507-235-5503  
Toll Free: 800-658-2477  
1151 Lake Ave Fairmont, MN 56031




Member FDIC

TRIUMPH STATE BANK

P.O. Box 329  
Trimont, Minnesota 56176  
507-639-2981


Salutes Area  
Conservation Farmers

Celebrate the importance of agriculture.




Farmers work the land with respect and pride to provide safe, plentiful food for our families and others around the world. So please remember to thank our American farmers.

Peters Insurance Agency

 GRINNELL MUTUAL

206 North State St  
Fairmont, Mn  
507-238-2882



Trust in Tomorrow.



## I-90 Soil Health Tour - February 25, 2020

This year's I-90 Soil Health Tour will feature 3 experts on soil health, 2020 at the Fairmont Knights of Columbus Hall (920 E 10th St, Fairmont,



**Photo: Cover crops growing in a soybean field in Elm Creek Township, Martin County. The cover crops help reduce erosion, reduce weed pressure and use up leftover nitrogen.**

cover crops, no-till and strip-till. The event will be held on February 25th, MN 56031). We will begin at 9:00 AM and will conclude by 2:30 PM. A

lunch will be included. This is a free event and anyone is welcome to attend.

The main focus of this year's event will be the economics of no-till and cover crops. Two local farmers, Andy Linder and Matt Alford (both of Faribault County), will share their experiences with cover crops and no-till/strip-till. They will also share their economic information including costs and profits of their systems.

Rick Clark is a Williamsport, Indiana farmer. He is a 5th generation farmer. To quote the National No-Till Farmer, "To Rick Clark, 'Farming Green' is a systematic approach to regenerative soil health and that's what he brings to the 7,000 acres he

manages at both Clark Land & Cattle and for his family. He strives to be the best steward of the land. A main component of his no-till system is maximizing cover crop performance and planting his cash crops into living covers to build biomass, suppress weeds, recycle nutrients and feed soil microbes." Rick has been farming for 35 years and has included no-till and cover crops in his system for the last 10 years. He is a Purdue University graduate with an Ag Economics degree.

If you are interested in adopting no-till and/or cover crops, come join us on February 25th. You will learn how to make these conservation practices work financially and will have the opportunity to ask the speakers questions.

If nothing else, come join us for a free lunch!

RSVP's are not

necessary but will help with the lunch count. Please let Martin SWCD know if you plan on attending. You can RSVP by phone at 507-235-6680 Ext. 118 or in person at our office (923 North State Street, Suite 110, Fairmont, MN 56031).

No-till and cover crops are two of the most effective practices to positively impact water

quality within Martin County. Because of this positive impact on water quality, Martin SWCD offers cost-share opportunities within critical watersheds for a farmer to adopt on or both of the practices. Please contact us to see if you would qualify.

We hope to see you at the 2020 Soil Health Tour!

## Native local ecotype used in prairie restoration

Martin Soil and Water Conservation District continues to work on a grant received in 2015 from the Environmental and Natural Resources Trust Fund,

and transplanting these at risk species. Project work continues on one site having a prairie restored using local source ecotype that was purchased by the Fox Lake Conservation

### Continued from page 45

mined based on the lower of either the actual loss certified by the producer and determined acceptable by FSA or the county expected yield and county disaster yield. The county disaster yield is the production that a producer would have been expected to make based on the eligible disaster conditions in the county.

WHIP+ payments for 2018 disasters will be eligible for 100 percent of their calculated value. WHIP+ payments for 2019 disasters will be limited to an initial

50 percent of their calculated value, with an opportunity to receive up to the remaining 50 percent after January 1, 2020, if sufficient funding remains.

Both insured and uninsured producers are eligible to apply for WHIP+. But all producers receiving WHIP+ payments will be required to purchase crop insurance or NAP, at the 60 percent coverage level or higher, for the next two available, consecutive crop years after the crop year for which WHIP+ payments were paid. Producers who fail to purchase crop insurance for the next two

applicable, consecutive years will be required to pay back the WHIP+ payment.

Additional information about WHIP+ program eligibility and payment limitations can be found at [farmers.gov/recover](http://farmers.gov/recover) or by contacting your local [USDA Service Center](http://USDA Service Center).

### ASK FSA

Are you looking for answers to your FSA questions? Then ASK FSA at [askfsa.custhelp.com](http://askfsa.custhelp.com).

AskFSA is an online resource that helps you easily find information and answers to your FSA questions no matter where you are or

what device you use. It is for ALL customers, including underserved farmers and ranchers who wish to be enrolled in FSA loans, farm, and conservation programs.

### Through AskFSA you can:

- Access our knowledge base 24/7
- Receive answers to your questions faster
- Submit a question and receive a timely response from an FSA expert
- Get notifications when answers important to you and your farming operation are updated

Customize your account settings and view responses at any time.



## ENVIRONMENT AND NATURAL RESOURCES TRUST FUND

recommended by the Legislative Citizens Commission on Minnesota Resources. The project goals for this grant is to collect and propagate native rare uncommon and at risk local source ecotype plant species for habitat restoration projects. A local grower is being utilized for seed collection, propagation, growing

League in 2016. This parcel is one hundred thirty nine acres of marginal agricultural farm land that will have multiple wetlands restored and planted to native prairie. This parcel is located in Elm Creek Township section 23, bordering an existing Minnesota Department of Natural Resource Wildlife Management Area named Caron.

With this addition, the wildlife management area will equal five hundred seventy one acres. Many rare uncommon species were transplanted or seeded on this parcel. Martin County West High School students, the wrestling club, and two interns through the Minnesota Valley Action Council spent many hours transplanting local source ecotype. This was an educational experience about the importance of having a diverse habitat on a prairie. Thousands of plants grown from local ecotype have been transplanted on this one site.

After the restorations are complete this parcel will be managed by the Minnesota Department of Natural Resources and will be open to the public for recreational enjoyment.

## OLSON RENTAL

YOUR FLOOR SANDING HEADQUARTERS

### DRUM SANDING EQUIPMENT

**8" Drum - No chance of gouging**



### ELECTRICAL ORBITAL FLOOR SANDER

- Excellent "between coats" system
- Designed especially for fine finishing of hardwood floors
- 12"x18" sanding pad size

**Easy Off- Easy On self tightening**

RENTAL ITEMS TO COMPLETE THAT HARDWOOD FLOOR REFINISHING PROJECT



8" Drum Sander



Wood Floor Edger

**DUSTLESS ELECTRIC DRYWALL SANDER**  
1500-2000 rpm  
13' long vacuum hose



**OLSON**  
RENTALS

LP GAS  
HONDA

**Husqvarna**  
**HUSTLER**

914 N. State St. • Fairmont, MN • 507-238-1393

[www.olsonrental.com](http://www.olsonrental.com)

## DOT INSPECTIONS



**We inspect all makes and models!**

**Avoid future down time and get an inspection today!**

**Let our ASE, Isuzu, GM and MN DOT certified technicians put your mind at ease during this busy season.**

**ELIZABETH**  
CHEVROLET

329 Highway 15 S • Truman, MN  
Phone: 507-776-2131 or 888-635-2275  
[www.elizabethchevrolet.com](http://www.elizabethchevrolet.com) • Pick up & delivery Fairmont Area





Martin County SWCD environmental awareness day event was held at Heritage Acres in Fairmont on September 17th for all 5th grade students throughout the county. The full day event included four stations which consisted of a Native prairie, a watershed module, Fish station and the University of Minnesota Raptor Station. Approximately 300 students attended this annual event.

## Walk-In Access 2020

The MN Department of Natural Resource (MN DNR) Walk-In Access program, (WIA) provides public hunting or recreational opportunities on private lands that are already enrolled in conservation programs. Currently through WIA, nearly 27,000 acres of private land on 260 sites in western and south central Minnesota is open to the public from September 1, 2019 to May 31, 2020.

These acres are open to the public if the individual has purchased and possesses a \$3 WIA validation from the MN DNR. In return for opening up the land to the public, the land owner is compensated with an annual payment with a one to three year contract.

WIA is targeted towards land with high quality natural cover. This may include parcels in a conservation program such as Conservation Reserve Enhancement Program (CREP), Conservation Reserve Program (CRP), Reinvest in Minnesota (RIM) and the Wetlands Reserve Program (WRP). WIA seeks landowners with parcels of 40 acres or more with high quality natural cover.

The 2020 landowner

signup period for Walk-In-Access will take place in February or March. After the application period, the MN DNR reviews all applications and prioritizes parcels for the WIA program.

Local Soil and Water Conservation Districts (SWCDs) enroll landowners in WIA. Landowners can receive \$10-\$13/acre to allow public hunting access. WIA agreements are voluntary and include an opt-out clause.

If interested in finding existing parcels enrolled in WIA, please visit the

MN DNR website or stop by the Martin SWCD office for a free Minnesota 2019 Walk-In Access hunting atlas. Parcels enrolled in WIA are posted with boundary signs. Each year parcels expire and new ones are added, check the WIA hunting atlas each year for parcel locations.

Landowners interested in enrolling land in the WIA program should contact the MN DNR by calling 888-646-6367, or contact Martin Soil and Water Conservation District, visit us at 923 North State Street Fairmont MN or call 507-235-6680.

## Martin County Ready Mix



2090 135<sup>th</sup> St. ★ Fairmont, MN  
(just north of Bettin Trucking)

### Your RM Supplier of TK Products

- Decorative Sealers
- Surface Retardant
- Bonding Agents
- Curing Compounds

Concrete Contractors come out and see Jason.  
We'll talk about your concrete jobs for the summer!

★ (507) 235-5359 ★

## Well Sealing

Sealing abandoned wells is one of the most effective ways to protect our groundwater. The majority of rural acreages rely on groundwater for their drinking water. Martin SWCD has cost-sharing for sealing these abandoned wells again in 2020. Cost-sharing will pay 50% of the cost to seal an abandoned well up to a \$1,000 maximum. So as an example, if it costs \$500 to seal a

well, cost-share will reimburse the land owner \$250. Likewise, if it costs \$3,000 to seal a well, a landowner will be reimbursed the maximum cost-share allowable of \$1,000. Contracts need to be approved prior to sealing a well. If you have an unused or abandoned well on your property, you can contact the Martin SWCD at 507-235-6680 to apply for cost-share.



## BRIDGESTONE Firestone



Tires for All Vehides & Conditions at Prices You Deserve!

### For All Your Automotive Repairs

- Tune Ups • Eldorado Tires
- Struts & Shocks
- Oil Changes • Brakes
- Batteries • Tire Repairs
- Computer Diagnostics
- Check Engine Light
- 3D Image Wheel Alignment
- All Minor Repairs

SERVING YOU SINCE 1984

Richard's  
AUTO REPAIR & TOWING

410 E. Blue Earth Ave. • Fairmont 507-235-5800

- Full Service • Starting
- Wheel Lift & Flatbed Towing
- Local & Long Distance Wreck Recovery

## OIL CHANGE

Drain old oil and refill with the required amount of quality motor oil. Install new oil filter. Cars Only!

SAVE TODAY! \$4 OFF

EXPIRES 2/29/20. Most vehicles. Oil & Filter Disposal Fee extra. Not to be combined with another offer on same product or service.





United States Department of Agriculture

## Farm Service Agency Conservation Reserve Program

**54th General Enrollment Period**  
**Dec. 9, 2019 through Feb. 28, 2020**

### Overview

USDA's Farm Service Agency (FSA) will conduct a Conservation Reserve Program (CRP) general enrollment from Dec. 9, 2019, through Feb. 28, 2020.

CRP is a federally-funded voluntary program that contracts with agricultural producers so that environmentally sensitive agricultural land is not farmed or ranched, but instead devoted to conservation benefits. CRP participants establish long-term, resource-conserving plant species, such as approved grasses or trees (known as "covers") to control soil erosion, improve water quality and develop wildlife habitat. In return, FSA provides participants with rental payments and cost-share assistance. Contract duration is between 10 and 15 years. Accepted contracts for the 54th CRP enrollment period will become effective Oct. 1, 2020.

CRP is authorized by the

Food Security Act of 1985 and was reauthorized by the Agricultural Improvement Act of 2018 (the 2018 Farm Bill). FSA administers CRP, while other USDA agencies and partners provide technical support. Additional information on CRP is available in the FSA fact sheet, "Conservation Reserve Program."

### Submitting CRP Offers

Land that is not currently enrolled in CRP may be offered in CRP. In addition, CRP producers whose CRP contracts expired on Sept. 30, 2017, Sept. 30, 2018, Sept. 30, 2019 or are expiring on Sept. 30, 2020, including acres expiring from certain State Acres for Wildlife Enhancement (SAFE) practices and the Highly Erodible Lands Initiative (HELI) contracts may submit offers.

To submit CRP offers, producers must visit their local FSA office. FSA will accept offers only during the enrollment period.

### Who is Eligible?

To be eligible for CRP enrollment, a producer must have owned or operated the land for at least 12 months prior to the end of this CRP enrollment period, unless:

- The new owner acquired the land due to the previous owner's death;
- The ownership change occurred due to foreclosure where the owner exercised a timely right of redemption in accordance with state law or;
- The circumstance of the acquisition presents adequate assurance to FSA that the new owner did not acquire the land for the purpose of placing it in CRP.

### What Land is Eligible?

To be eligible for the CRP general enrollment period, land must be cropland (including field margins) that is planted, or considered planted, to an agricultural commodity four of the six crop years from 2012 to 2017, and be physically and legally capable of being planted (no planting restrictions due to an easement or other legally binding instrument) in a normal manner to an agricultural commodity. Alfalfa or other multiyear grasses and legumes grown in a rotation not to exceed 12 years may also be eligible.

### Additional Cropland Requirements

In addition to the eligible land requirements for the CRP general enrollment period, cropland must meet one of the following criteria:

- Have a weighted average erosion index of eight or higher;
- Be expiring CRP acres or;
- Be located in a national

for each offer prior to enrollment. Producers may offer land below the rate to increase the likelihood that their offer will be accepted.

- **Cost-Share Assistance:** FSA provides cost-share assistance to participants who establish approved cover on eligible cropland. The cost-share assistance cannot



USDA Photo

or state CRP conservation priority area.

### CRP Payments

FSA provides those applicants who are selected for CRP general enrollment with annual rental payments and costshare assistance.

- **Rental Payments:** In return for establishing long-term, resource-conserving covers, FSA provides rental payments to participants. FSA bases rental rates on the relative productivity of the soils within each county and the average dryland cash rent subject to a statutory 85 percent proration. County office staff working with the producer will calculate the maximum CRP rental rate

exceed 50 percent of the participant's costs to establish approved practices.

### Ranking CRP Offers

FSA will rank offers for the CRP general enrollment period according to the Environmental Benefits Index (EBI). FSA collects data (primarily based on location, soils information and selected conservation practice) and determines the environmental indices for the land offered.

FSA ranks each eligible offer in comparison to all other offers and selects from that ranking. After the enrollment period ends, the Secretary of Agriculture will decide where to make the

EBI cutoff. Those who have met previous EBI thresholds are not guaranteed a contract under this enrollment period. Producers may consult with local FSA and Natural Resource Conservation (NRCS) staff on how to maximize EBI points and increase the likelihood that their offer will be accepted.

More information on EBI for the 54th CRP enrollment period is available by reading the FSA fact sheet, "Conservation Reserve Program Enrollment 54, Environmental Benefits Index."

### CRP Continuous Enrollment

In addition to the CRP general enrollment period, producers at any time can participate in CRP continuous enrollment period, in which producers can enroll the most environmentally sensitive land. More information on CRP continuous enrollment is available in the FSA fact sheet, "Conservation Reserve Program Continuous Sign-Up."

### More Information

This fact sheet is for informational purposes; other conditions may apply. Consult your local FSA office for details. For more information, contact your local service center and USDA Farm Service Agency office: farmers.gov/service-locator.

**STILL  
RUNNING  
OUT TO  
FETCH  
THE  
PAPER?**



**Subscribe now to the Martin County Star  
and it will be delivered to your mail box  
for half the cost!**

**Save 50% Off**  
the regular subscription price  
**\*NEW CUSTOMERS ONLY**

**Martin County  
Star**

PO Box 820  
Sherburn, MN 56171  
507-764-6681  
mcstarads@midconetwork.com

### EXTENDED SALE!! SUBSCRIPTION SPECIALS

Subscribe by February 29, 2020 to take advantage of these special rates! Mention promo code "FETCH" by phone or mail.

**IN MARTIN COUNTY**  
1 year/regularly \$36.00 NOW \$18.00  
**OUT OF COUNTY**  
1 year/regularly \$44.00 NOW \$22.00  
**OUT OF STATE**  
1 year/regularly \$48.00 NOW \$24.00

\*Offer good to new subscribers who have not had a subscription in the past 3 months.



**BATTERY SALE!**

OFFERS GOOD  
JAN. 1 - FEB. 28, 2020

SAVE UP TO

**\$20**

Batteries for Trucks,  
Tractors and Industrial  
applications also available!

In-store napa coupon

Purchase NAPA Legend or  
Legend Premium battery and  
receive a \$20 Napa Coupon  
towards your next in-store purchase  
or NAPA AutoCare Service!

**\$20  
COUPON**



**\$20  
COUPON**



**1225 E. Blue Earth Ave. • Fairmont, MN  
235-3388 • www.napastargroup.com**

**BUYING? SELLING?**



**COMMITTED TO  
EXCELLENCE!**

**Call one of our  
Professionals with your  
real estate questions!**



**507.238.4796  
Fairmont, MN**

**Century21NorthlandRealty.com**  
Independently owned and operated





United States Department of Agriculture

## Farm Service Agency

### Conservation Reserve Program - Continuous Enrollment Period

#### Overview

The U.S. Department of Agriculture (USDA) is accepting offers for specific conservation practices under the Conservation Reserve Program Continuous Signup. The USDA Farm Service Agency's (FSA) CRP is a voluntary program that contracts with agricultural producers so that environmentally sensitive agricultural land is devoted to conservation benefits. CRP participants establish long-term, resource-conserving vegetative species, such as approved grasses or trees (known as "covers"), to control soil erosion, improve the water quality and enhance wildlife habitat. In return, FSA provides participants with annual rental payments and cost-share assistance. Continuous signup enrollment contracts are 10 to 15 years in duration. The Food Security Act of 1985, as amended, authorized CRP. The program is also governed by regulations published in 7 CFR, part 1410. The program is implemented by FSA on behalf of USDA's Commodity Credit Corporation. To offer land for continuous enrollment, producers should contact their local FSA office.

#### Benefits

CRP protects millions of acres of American topsoil from erosion and is designed to safeguard the nation's natural resources. By reducing water runoff and sedimentation, CRP protects groundwater and helps improve the condition of lakes, rivers, ponds and streams. The vegetative covers also make CRP a major contributor to increased wildlife populations in many parts of the country.

#### Administration

FSA administers CRP while technical support functions are provided by:

- USDA's Natural Resources Conservation Service (NRCS);
- State forestry agencies;
- Local soil and water conservation districts; and
- Other non-federal providers of technical assistance.

#### Continuous Enrollment

Under continuous CRP signup, environmentally sensitive land devoted to certain conservation practices can be enrolled in CRP at any time. Offers are automatically accepted provided the

land and producer meet certain eligibility requirements and the enrollment levels do not exceed the statutory cap. Unlike CRP enrollments under general CRP signups or CRP Grasslands, offers for continuous enrollment are not subject to competitive bidding during specific periods. If the offered acres are currently enrolled in CRP under a CRP contract that expires September 30, then the effective start date of the new CRP contract must be the following October 1. If the offered acres are not currently enrolled in CRP, then the producer may choose to defer the effective start date of the new CRP contract for up to six months after the offer is approved.

#### Who is Eligible?

A producer must have owned or operated the land for at least 12 months prior to submitting the offer, unless:

- The new owner acquired the land due to the previous owner's death;
- The ownership change occurred due to foreclosure where the owner exercised a timely right of redemption in accordance with state law; or

- The circumstances of the acquisition present adequate assurance to FSA that the new owner did not acquire the land for the purpose of placing it in CRP.

#### Eligible Land

Land must be crop-

land that is planted or considered planted to an agricultural commodity four of the six crop years from 2012 to 2017 and is physically and legally capable of being planted (no planting restrictions due to an easement or other legally binding instrument) in a normal manner to an agricultural commodity. Certain mar-



ginal pastureland that may be devoted to riparian buffers, wildlife habitat buffers, or wetland buffers is also eligible.

#### Eligible Practices

Land must be eligible and suitable for any of the following conservation practices:

- Grass Waterway

- Shallow Water Area for Wildlife
- Contour Grass Strip
- Filter Strip
- Riparian Buffer
- Denitrifying Bioreactor on Filter Strip and Riparian Buffer
- Saturated Filter Strip and Riparian Buffer
- Habitat Buffers for Upland Birds
- Wetland & Buffer

#### SAFE Practices

- Wetland Restoration on Floodplain and Non-floodplain
- Prairie Strips
- Windbreaks, Shelterbelts and Living Snow Fences
- Marginal Pastureland Wetland Buffer and Wildlife Habitat Buffers

- Long Leaf Pine Establishment
- Duck Nesting Habitat
- Pollinator Habitat
- Bottomland Timber Establishment on Wetlands
- Farmable Wetlands Program (FWP) Constructed Wetland
- FWP Aquaculture Wetland Restoration
- FWP Flooded Prairie Wetland
- Farmable Wetlands and Farmable Wetland Buffer
- Wellhead Protection Area Practices

#### Payments

Under CRP continuous signup, FSA provides eligible participants with annual rental payments and cost-share assistance. A Signup Incentive Payment of 32.5 percent of the first full year annual rental payment is paid at contract approval on all newly enrolled Continuous CRP contract acreage. A Practice Incentive Payment of 5 percent is paid for installing the practice. **Annual Rental Payments**

• In return for establishing long-term, resource-conserving covers, FSA provides annual rental payments at 90 percent of the existing rate to eligible CRP continuous-participants based on per acre cropland and marginal pasture land rental rates determined by FSA.

• The per-acre annual rental rate may not exceed the calculated rate or \$300/acre. Producers may elect to receive a rental rate amount less than the maximum payment rate.

#### Cost-Share Assistance

Cost-share of up to 50 percent of the reimbursable cost of installing the practice is provided by FSA.

Cost-share assistance is not available for any management activity.

#### More Information

For more information about FSA and its programs, visit [fsa.usda.gov](http://fsa.usda.gov) or contact your local FSA office. To find your local FSA office, visit [farmers.gov/service-locator](http://farmers.gov/service-locator).



United States Department of Agriculture

### Farm Service Agency Conservation Reserve Program

#### Overview

USDA Farm Service Agency's (FSA) Conservation Reserve Program (CRP) is a voluntary program that contracts with agricultural producers so that environmentally sensitive agricultural land is not farmed or ranched, but instead devoted to conservation benefits. CRP participants establish long-term, resource-conserving plant species, such as approved grasses or trees (known as "covers") to control soil erosion, im-

prove water quality and develop wildlife habitat. In return, FSA provides participants with rental payments and cost-share assistance. Contract duration is between 10 and 15 years.

CRP is authorized by the Food Security Act of 1985 and was reauthorized by the Agricultural Improvement Act of 2018 (the 2018 Farm Bill). The program is also governed by regulations published in 7 CFR, part 1410. The program is implemented

by FSA on behalf of USDA's Commodity Credit Corporation.

#### Program Administration

FSA administers CRP while technical support functions are provided by: USDA's Natural Resources Conservation Service (NRCS); State forestry agencies; Local soil and water conservation districts and; Non-federal technical assistance providers.

#### Benefits

CRP protects more than 20 millions of acres of American topsoil from erosion and is designed to safeguard the nation's natural resources. By reducing water runoff and sedimentation, CRP pro-

tections groundwater; helps improve the condition of lakes, rivers, ponds and streams; and is a major contributor to increased wildlife populations in many parts of the country.

#### General Enrollment

Under general enrollment, producers have the opportunity to offer land for CRP general enrollment annually during announced enrollment periods. Offers for CRP contracts are ranked according to the Environmental Benefits Index (EBI). FSA uses the following EBI factors to assess the environmental benefits for the land of-

**Continued on page 9S**

## Stock Up and Save BIG!



☒ **Up to 15% OFF**  
John Deere & Fleetguard Filters

☒ **15% OFF**  
Planter Openers

☒ **10% OFF**  
Sweeps

☒ **Spring Parts Catalog Sale**  
Good until March 31, 2020

Contact your local Parts Department today!



**KIBBLE  
EQUIPMENT**

[www.KibbleEq.com](http://www.KibbleEq.com)

Blue Earth | 507-526-2714



**JOHN DEERE**

Offers valid until March 31, 2020. Some restrictions may apply, see your local store for complete details.



## Continued from page 85

ferred:

- Wildlife habitat benefits resulting from covers on contract acres;
- Water quality benefits from reduced erosion, runoff and leaching;
- On-farm benefits from reduced erosion;
- Benefits that will likely endure beyond the contract period;
- Air quality benefits from reduced wind erosion and;
- Cost.

Further information on CRP general signup is available in the FSA fact sheet "Conservation Reserve Program General Signup."

### Continuous Enrollment

Under CRP continuous enrollment, environmentally sensitive land devoted to certain conservation practices may be enrolled in CRP at any time. Certain eligibility requirements still apply, but offers are not subject to competitive bidding. Further information on CRP continuous enrollments is available in the FSA fact sheet "Conservation Reserve Program Continuous Enrollment."

### Grasslands Enrollment

CRP Grasslands helps landowners and operators protect grassland, including rangeland, and pastureland, and certain other lands, while maintaining the areas as grazing lands. The program emphasizes support for grazing operations, plant and animal biodiversity, and grassland and land containing shrubs and forbs under the greatest threat of conversion. Further information on CRP Grassland enrollments is available in the FSA fact sheet "Conservation Reserve Program Grasslands."

#### Who is Eligible?

A producer must have owned or operated the land for at least 12 months prior to submitting the offer for continuous or 12 months before the close of general or grasslands signup, unless:

- The new owner acquired the land due to the previous owner's death;
- The ownership change occurred due to foreclosure where the owner exercised a timely right of redemption in accordance with state law or;
- The circumstances of

the acquisition present adequate assurance to FSA that the new owner did not acquire the land for the purpose of placing it in CRP.



USDA Photo

#### Eligible Land

For cropland, land must be planted or considered planted to an agricultural commodity for four of six crop years from 2012 to 2017, and that is physically and legally capable of

being planted (no planting restrictions due to an easement or other legally binding instrument) in a normal manner to an agricultural commodity.

For general signup, land also must meet one of the following criteria:

- Have a weighted average erosion index of eight or higher;
- Be enrolled in a CRP contract that expires Sept.

## Minnesota Conservation Reserve Enhancement Program (MN CREP)

Jesse Walters - Martin SWCD

#### What is MN CREP?

MN CREP is a voluntary, federal-state funded natural resource conservation program that uses a science-based approach to target environmentally sensitive land in 54 Counties in southern and western

via payments to farmers and agricultural land owners.

Here's how it works:

- Landowners enroll in the federally-funded Conservation Reserve Program (CRP) for 15 years.
- CRP is

administered by the USDA-Farm Service Agency (FSA). It uses agricultural land for conservation benefits, rather than farming or ranching.

- The same land is also enrolled into a state-funded perpetual



Picture: MN CREP Prairie Restoration. Martin County.

Minnesota. This is accomplished through permanent protection by establishing conservation practices

conservation easement through the Reinvest in Minnesota (RIM) Reserve program, administered by the Minnesota Board of Water and Soil Resources (BWSR).

- Private ownership continues and the land is permanently restored and enhanced for conservation benefits.

MN

CREP

#### Objectives

MN CREP will protect



Picture: MN CREP Floodplain Wetland, not yet restored. Martin County.

60,000 acres of the highest priority areas across 54 counties. It will:



Picture: MN CREP Wetland Restoration - Non-Floodplain. Martin County.

- Target riparian areas and marginal agricultural land
- Restore hydrology, increase infiltration and provide flood mitigation

Agricultural Statistics Service (NASS). The soil rental rates are subject to an 85 percent proration for general signup and a 90 percent proration for continuous signup. The maximum CRP rental rate for each offer is calculated in advance of enrollment. Producers may offer land at that rate or offer a lower rental rate.

CRP grasslands rates are based on 75 percent of the NASS pasture rate.

#### More Information

This fact sheet is provided for informational purposes only; other restrictions may apply. For details, contact your local FSA office. To find your local FSA office, contact your local service center and USDA Farm Service Agency office: **farmers.gov/service-locator**.

• Provide habitat for wildlife, non-game species and pollinators

- Reduce nitrate loading in drinking supplies

How will the land be restored and protected?

MN CREP will focus on three main Conservation Practices (CPs) that have been identified through the federal CRP:

1. Grass Filter Strips (CRP CP 21) - This is land adjacent to a body of water. The intent is to filter runoff before it enters the waterbody.
2. Wetland Restoration - Non-Floodplain (CRP CP 23a) - This is land that has hydric soil and depressions that could hold water. These areas often hold water after a heavy rain.
3. Wetland Restoration - Floodplain (CRP CP 23) - This is land adjacent to a waterbody that has hydric soil and a tendency to flood. These areas often flood due to a stream or creek flooding over its typical high-water level.

Why Enroll Now?

There are many reasons to consider MN CREP now, based on the long-term goals of the landowner. Some of these include:

Fair compensation - Payments for the land retirement portion of MN CREP are based

Continued on page 105

**Tony's Grain Systems and Buildings, LLC**


**Grain Bins, Dryers, Material Handlings/ Steel Buildings, Installation, and SERVICE**

With the wet and stressful spring, help relieve that stress with an "on Farm" dryer! On Farm dryers are more convenient and will help eliminate the drying costs charged by elevator, harvest earlier, and market your grain how and when YOU want.

**24 HOUR SERVICE**

**Call for a Quote**

Tony's Grain Systems and Buildings, LLC

**Tony O'Donnell** 

Cell: 507-525-5800

tonysgrain@gmail.com



# Farming defines you.

Resilience sustains you.

A hungry world needs you.

At Bank Midwest, a lot of us grew up on farms and in farming communities. We know firsthand the passion and perseverance today's farmers need to succeed.

There is no industry we are better equipped to serve than yours, and we aspire to do it with the hard work and humility you exemplify.



**Bank Midwest**

Member FDIC

**BankMidwest.com**



**FULL LINE OF BULK FUEL & OIL PRODUCTS**

**NOW HANDLING HITCH DOC FUEL CADDIES.**



**WELCOME OIL**

Box 415 • WELCOME, MN 56181

TRAVIS SCHUETT • WELCOME.OIL@OUTLOOK.COM

**507-728-8865**



## The Aquatic Invasive Zebra Mussel

Zebra mussels are an aquatic invasive species that can be destructive to a lake's ecosystem, aquatic food chains, water intake structures, boats and



Photo, a native mussel almost completely covered with zebra mussels.

other water structures. A zebra mussel looks like a small, fingernail sized clam. They have D shaped shells with alternating light and dark bands. Growing up to two inches long, but most are less than one inch. They are the only fresh water mollusk that can attach to a solid underwater surface using glue like fibers called byssal threads. Once they are attached it is difficult to remove them.

Zebra mussels are able to spread rapidly because of their reproductive cycle and very few natural predators. Females can produce up to half a million eggs per summer. The fertilized eggs develop into microscopic larvae called veligers, free floating in the water column before attaching to any hard surface. They also are transported in water by boats, trailers, live wells, bait buckets, and other water related equipment., traveling from lake to lake unnoticed.

Diving ducks, freshwater drum, and other fish eat zebra mussels but cannot control the population densities. Areas with large densities can have

up to 6,000 mussels per square foot. In addition to competing with other aquatic organisms for food and covering beaches with sharp shells, zebra

mussels can kill native mussels by colonizing on their shells leading to suffocation. They have severely reduced native mussel populations in some areas. Minnesota is home to 50 native species of mussels, 28 of them are listed as either endangered, threatened or of special concern.

They can tolerate a wide range of conditions and can significantly alter the ecosystem of waterbodies where they become established. Zebra mussels are filter feeders, filtering up to 1 liter of water a day. This can cause environmental harm by removing many microscopic plants and animals that are important food for native fish and invertebrates. The impacts of filtering this amount of water can cause an increase in water clarity. This may seem like a good thing, but can cause change in temperature and accelerate aquatic plant and algae growth.

Zebra mussels also attach and cause problems with water intake pipes for power plants, businesses, and

water supply facilities. The City of Fairmont collects most of their drinking water supply from Budd Lake. If zebra mussels get established in the Fairmont Chain of Lakes, it could cost the water plant and residents a lot of money. Millions of dollars are spent each year for cleanup, repair and replacement of water intake structures, due to zebra mussels. This is not something we want to deal with.

Currently the closest population of zebra mussels is just across the Minnesota border into Iowa, only 45 miles away. These three lakes; Big Spirit, East Okoboji, and West Okoboji all have zebra mussels. They are causing problems for the cities, lakeshore owners, businesses, and water recreationalists, attaching to boats, boat lifts, docks, water intake pipes, and any hard surface available. Beach goers and swimmers are recommended to wear foot protection to prevent injury from their sharp shells.

In Minnesota, any new aquatic invasive species finding is confirmed by the MN Department of Natural Resources. They are tracking them on the infested waters list found on the MN DNR website. Currently about 8% of Minnesota's more than 11,000 lakes are on the infested waters list for some type of aquatic invasive

species. As of October 2019 the MN DNR has confirmed zebra mussels in 214 lakes and wetlands, which is less than 3% of MN lakes.

As of now, there is no control method to eradicate zebra mussels. The best control efforts focus on preventing the introduction into new waterbodies. Invasive species are a threat, it is important to make sure we are not transporting them to another water body. Follow these easy steps to help prevent the spread of aquatic invasive species.

**Clean;** clean off all plants, animals and mud from boats, trailers or any water related equipment. It is against the law to transport any aquatic plant or animal.

**Drain;** drain all water from equipment. Boat plugs are required to be out when arriving and leaving a lake launch.

**Dry;** it is required to dry all docks and lifts for 21 days before entering a new body of water.

**Dispose;** dispose of unwanted bait in the trash. If you want to keep unused bait, water must be replaced with tap water when leaving a lake.

For any questions about zebra mussels or other aquatic invasive species contact the Minnesota Department of Natural Resources or Martin Soil and Water Conservation District at 923 North State Street in Fairmont MN, or call 507-235-6680.

### Continued from page 9S

on current CRP rental rates and RIM rates.

**Rights retained** – Landowners maintain ownership, including the right to control access to the land covered by the MN CREP CRP contract/



Picture: MN CREP Filter Strip. One hundred percent of these

Martin County.

**Returns on marginal cropland** – MN CREP prioritizes and targets marginal cropland that is often associated with buffer areas and drained or altered wetlands. These lands often produce less than average crop yields, and are less profitable even when crop prices are high.

**Impact on water quality and habitat** – MN CREP focuses on both water quality and wildlife habitat. Enrolled land will deliver multiple benefits to ground and surface water, as well as provide habitat for pollinators and wildlife.

**Option for re-enrolled CRP** – Lands

that are currently enrolled in CRP and eligible for re-enrollment during a MN CREP sign-up period may be eligible. This can result in seamless coverage of CRP annual payments and may allow for the existing vegetation to stay in place.

**Quality native restoration** – Restoration of the enrolled land will follow state and federal standards, and focus on native plant species.

restoration costs will be covered by the CRP and RIM programs, leaving no out-of-pocket expenses to the landowner.



Picture: MN CREP Prairie Restoration. Martin County.

For more information please contact Martin SWCD at 507-235-6680 or stop and visit us at 923 North State Street, Suite 110, Fairmont, MN 56031.

### PRAIRIE SMALL ENGINE WORKS

**ECHO** POWER EQUIPMENT (CANADA) **KOHLER engines** BORN TO RUN

**STRIKEMASTER & JIFFY ICE AUGERS**

"Service on Most Makes of Mowers, Blowers, Chain Saws"

Stop in and see us at  
2810 N. NORTH AVENUE FAIRMONT • 235-3434

### D&K TIRE Service

AUTO • TRUCK • AG

- Farm & Highway Tire Service
- Large Variety of Tires For Your Auto, Light Truck, Truck & Farm
- Wheel Balancing
- TPMS Service
- Shocks & Struts
- Oil Changes & Brakes

State Hwy 15 So.  
Truman, MN 56088  
507-776-2233

**FALL & SPRING HOURS**  
M-F: 8AM-5PM,  
SAT: 8AM-Noon

**WINTER & SUMMER HOURS**  
M-F: 8AM-5PM,  
SAT: By Appointment Only

130 2nd Ave So.  
Amboy, MN 56010  
507-674-3149

121 Main St.  
Lake Crystal, MN 56055  
507-726-2446

See Cory in Truman for All your Tire Needs!

### ROSBURG CONSTRUCTION

Call now to get your project scheduled!

**507-728-8608**

- Land Leveling
- Waterways
- Tree Trimming & Removal
- Tile Repairs
- Wetland Restoration
- Road Rebuilding
- Clean Drainage Ditches
- Seed or Drill your Buffer Strip

### RE/MAX TOTAL REALTY FARM • HOME COMMERCIAL

Worldwide Exposure with two locally owned offices.



Wade Barsloui  
Owner/Broker  
507-525-0507  
wade.barsloui@remax.net  
507-526-5666

132 Sailor St., Blue Earth, MN 56013



Vonnie Cone  
Owner/Agent  
507-848-0114  
vonnice.cone@remax.net  
507-235-5666

1007 E. 10th St., Fairmont, MN 56031



Dallas Barsloui  
Agent  
507-525-0426  
dallas.barsloui@remax.net

Brody Bents  
Agent  
507-236-0466  
brody.bents@remax.net

Paul Determan  
Agent  
507-236-1214  
paul.determan@remax.net

Dan Fitzgerald  
Agent  
507-236-2013  
dan.fitz@remax.net

Chuck Omvig  
Agent  
507-236-4096  
chuck@omvig.com

Sarah Totzke  
Agent  
507-399-1535  
sarah.totzke@remax.net

Each Office Independently Owned and Operated



This Martin Soil & Water edition is composed by the Fairmont Photo Press.



# DUCKS UNLIMITED

## News from the Marsh

### MINNESOTA CONSERVATION

## Ducks Unlimited Projects in SW MN - Winter 2020

### Shallow Enhancements

Shallow Lakes throughout southern Minnesota have degraded to turbid conditions due to invasive fish, increased nutrients and water flows from a drained landscape, and stagnant high-water levels. These large wetland basins often have very little submerged aquatic vegetation or invertebrates that waterfowl rely on for food during brood-rearing and migration. To improve degraded shallow lakes, Ducks Unlimited (DU) engineers design and install water control structures for their Department of Natural Resources (DNR) and United States Fish and Wildlife Service (USFWS) partners that enable agency managers to temporarily lower water levels. These

### Lake

drawdowns, much like natural droughts, remove invasive fish, consolidate bottom sediment and nutrients, and allow for the germination of wetland plants on exposed lake bottoms. When natural water levels return, water quality and habitat is greatly improved. In the future, these will all be enhanced shallow lakes for both migrating waterfowl and the public to visit. In 2019 and 2020, DU will work with the Minnesota DNR to enhance the following shallow lakes:

- 260-acre Timm Lake in Yellow Medicine County
- 442-acre Lake Maria in Murray County
- 440-acre Curtis Lake in Yellow Medicine County
- 150-acre wetland on Tyler WMA in Lincoln County

### Public Acquisitions & Land Wetland Restorations

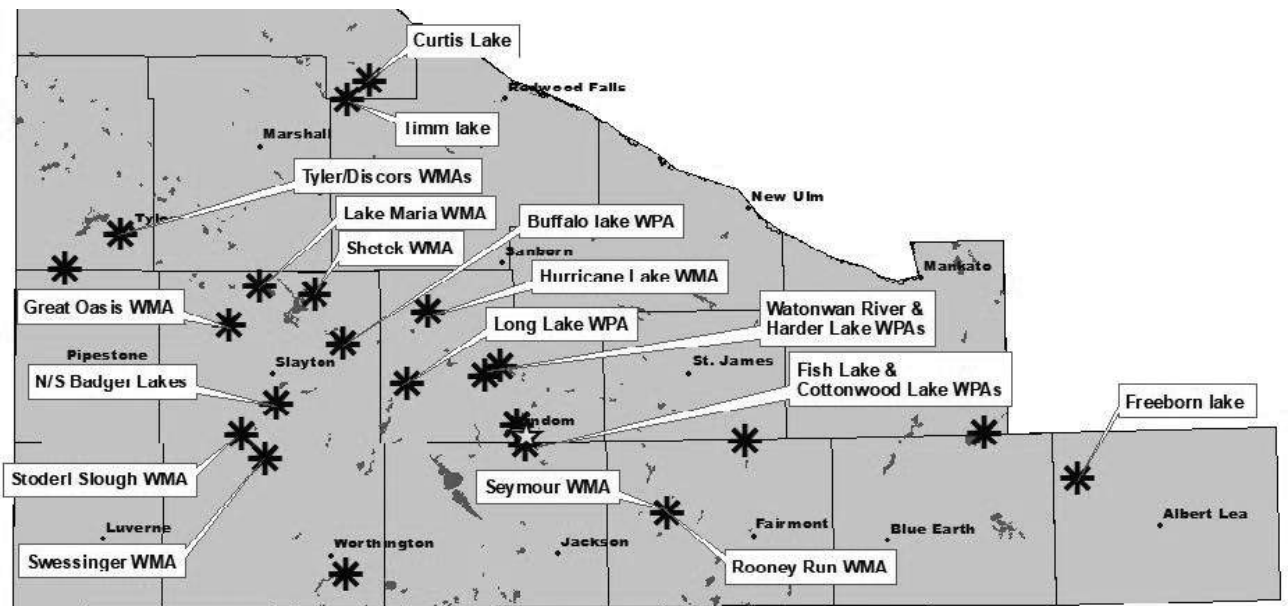
DU is actively developing many land acquisition and restoration projects in partnership with the Minnesota DNR across southern Minnesota. DU purchases land adjacent to existing Wildlife Management Areas (WMA), restores native prairie and drained pothole wetlands, and transfers the land to the DNR for public use. DU also works with the USFWS to restore small wetlands on existing Waterfowl Production Areas (WPA). The restoration work on these WPAs involves seeding upland habitat to a high-diversity mix of native plants, breaking or daylighting drainage

tile, removing sediment from wetlands, building embankments, and sometimes installing water control structures. In 2019 and 2020, DU will work to acquire and/or restore the following:

- 160 acres on Stoderl Slough WMA in Murray County
- 135 acres on Lake Maria WMA in Murray County
- 200 acres on Great Oasis WMA in Murray County
- 147 acres on Seymour WMA in Martin County
- 33 acres on Rooney Run WMA in Martin County
- 5 acres on Fish Lake WPA in Jackson County
- 6 acres on Long Lake WPA in Cottonwood County

- 2 acres on Cottonwood Lake WPA in Cottonwood County
- 10 acres on Watonwan River and Harder Lake WPAs in Cottonwood

- County
- 14 acres on Buffalo Lake WPA in Murray County.



## Timm Lake - Enhancement



• Timm Lake, a Designated Wildlife Lake in Yellow Medicine County, MN was once abundant with wildlife.

• Unfortunately, high stabilized water levels, invasive fish, and increased nutrient inflows have degraded it to its present, turbid state.

• To enhance the lake, DU engineers designed a new water control structure. Construction is currently underway.

## Tyler and Discors WMAs - Goehle Tract Restoration



• In 2018, DU purchased 152 acres just west of the city of Tyler in Lincoln County, MN.

• This past winter, DU restored 16 acres of wetlands by means of sediment removal, breaking and daylighting tile, construction of embankments, raising part of a road, and installing a water control structure.

• About 110 acres of upland habitat was seeded to a high-diversity seed mix of grasses and forbs.

**Thinking about hitting the road this winter?**

Get ready for Winter Driving with these Specials

Present these valuable coupons at the time of service.

**\$44.95 Winter maintenance & works package\***  
On most cars and trucks  
Test battery and inspect terminals and connections; up to five quarts of Motorcraft oil and new filter; top off and check strength of antifreeze and other fluids under the hood. Tire rotation; check tread depth on all four tires; check and adjust tire pressure to manufacturer's specifications; check brakes; check belts and hoses for cracks and improper tension. Taxes and disposal fees extra.

**FREE Battery Check**  
Visual Inspection and Rotunda Micro 490 tester.

**\$19.95** Be ready for winter, check heater and defroster operation

**\$38.59 Oil & filter change\***  
On most cars & trucks  
SYNTHETIC OIL EXTRA  
Service including up to five quarts of Motorcraft oil and new Motorcraft oil filter. Diesel vehicles are extra.

**\$149.95 Batteries\***  
Motorcraft Tested Tough  
100 month guarantee  
Includes Installation. Fits most cars and light trucks. If your battery is three years old or older, get ready for winter and save \$100 tow charge.

**\$79.95 Wheel alignment\***  
4-wheel  
On most cars & trucks  
All front-wheel drive vehicles need rear wheel alignment checked. Check and adjust camber and toe on our new computer alignment system. Additional parts and labor may be required on some vehicles.

**\$24.95 Motorcraft Wiper Blades\***  
per pair installed most cars and trucks  
Premium blade ONLY Wiper blades over a year old are no longer doing their job. Make sure you can see the road in front of you.

**\$60 Wheel balance, tire rotation and brake inspection\***  
Computer balance 4-wheels; inspect brake friction material, caliper operation, rotors, drums, hoses and connections; inspect parking brake; rotate and inspect 4 tires; dual rear wheel vehicles extra.

**\$19.95 Check hoses, belts and antifreeze strength for the coldest days ahead.**

**FREE ANTIFREEZE CHECK**

**FREE**  
Recall check on any Ford or Lincoln vehicle.

**Come In For A Free Battery Test**

"Your friendly Ford dealer since 1909"

**FAIRMONT FORD**

**www.fairmontford.com**  
507-235-6681 • 800-726-6912  
700 E. Blue Earth Ave.  
Fairmont, MN 56031  
Service Hours:  
Mon.-Fri., 7:30 am-5 pm  
Sat., 8 am-Noon

**KAHLER ELECTRIC**  
70th Year in Business!

**ELECTRICAL CONTRACTOR IN BUSINESS SINCE 1949**

- Industrial
- Commercial
- Agricultural
- Service
- Design/ Build
- Installation

Fiber / Data Installation & Termination  
Solar Sales & Installation  
Security Camera Sales & Installation

**(507) 235-6334**  
517 Winnebago Ave. • Fairmont, MN 56031

*Your hopes and dreams.*  
**BIG AND SMALL. WE'RE READY.**

We're Compeer Financial.™

Three Farm Credit cooperatives have united to strengthen our commitment to the agriculture industry. We have combined our resources, knowledge and expertise to champion the hopes and dreams of rural America like never before. Let's get started with yours. We wish you a safe and successful planting season.

#CHAMPIONRURAL

Steve Pomeroy, Financial Officer  
(507) 525-0986 | Steve.Pomeroy@compeer.com

Sara McCall, Associate Financial Officer  
(507) 525-8935 | Sara.McCall@compeer.com

Grant Pomeroy, Financial Officer  
(507) 317-8366 | Grant.Pomeroy@compeer.com

**COMPEER FINANCIAL**  
COMPEER.COM | (844) 426-6733

1st Farm Credit Services, Badgerland Financial, AgStar Financial Services and Compeer Financial are trademarks of Compeer Financial, ACA. Compeer Financial, ACA is an Equal Credit Opportunity Lender and Equal Opportunity Provider. ©2018 All rights reserved.



## Long Lake WPA - Wetland Restoration



- This past spring, DU restored 6 acres of small wetlands on Long Lake

WPA in Cottonwood County, MN.

- These restored wet-

lands will contribute to the diversity of waterfowl habitat at Long Lake, a

shallow Lake that DU enhanced in 2018.

## Fish Lake WPA - Wetland Restoration



- This fall, DU restored 5 acres of small wetlands on Fish lake WPA in Jackson County, MN.
- Work consisted of sediment and invasive

vegetation removal, tile investigation, seeding, construction of embankments, and the installation of rock checks to prevent erosion.

News from the Marsh

MINNESOTA CONSERVATION

### Rooney Run Wildlife Management Area - Krahmer Tract Restoration

**Project Location:** Northwest of Welcome in Martin County, Minnesota.

**Partners:** Minnesota Department of Natural Resources, The Lessard Sam's Outdoor Heritage Council, The North American Wetland Conservation Council, Fox Lake Conservation League, Martin County Soil and Water Conservation District, and the Martin County

**Conservation Club.**

**Size/Scope of this Project:** In 2016, Ducks Unlimited purchased a 285-acre tract on the Rooney Run Wildlife Management Area as recommended by the Lessard Sam's Outdoor Heritage Council. This tract includes 38 acres of shallow Round Lake and 32 acres of drained, restorable wetlands. Restoring the drained wetlands will be

challenging since the tract has nearly 30 miles of pattern tile, of which an estimated 9 miles will be broken, removed and capped.

**Goals of Project:** The purpose of this acquisition is to restore and protect 87 acres of wetland habitat, 32 acres of which are small pothole wetland basins, and 198 acres of highly diverse upland prairie grassland habitat.

**Wildlife Benefits:** The newly restored

and protected habitat on this tract will provide important breeding habitat for waterfowl and other wetland and prairie-dependent wildlife. Restored prairie pothole wetlands surrounded by restored grasslands will provide migratory bird nesting habitat while also buffering shallow Round Lake.

**Human / Social Benefits:** Restoration of the small wetlands and upland habitat

buffering Round Lake will help improve the water quality of this shallow lake. This public land will be open for hunting and other forms of public outdoor recreation.

**Current Status:** The

tract was seeded, and invasive trees removed in 2016. Wetland restoration is expected to occur in the summer 2020.

**Approximate Cost:** Total cost of this project will approach \$3 million.



eat play shop  
**LOCAL**



We Offer

## AGRICULTURAL LOANS

Set Up An Appointment With  
**Dan Hilgendorf**  
Today!



Invest In Your Community

We're Still Your Full Service Bank!

Home-Owned Independent Bank

### STATE BANK of FAIRMONT

918 E. Blue Earth Ave, Fairmont, MN  
(507) 238-4287

Member FDIC



**STIHL**

### REAL VALUE

"You can spend your money once and be good for years."

NICK DAVIS | HOMEOWNER

<b>FS 38</b>  TRIMMER ★★★★★ <b>\$139.95</b> "GREAT PRODUCT, VERY RELIABLE." - TOLBERT	<b>BGA 56</b>  BATTERY HANDHELD BLOWER ★★★★★ <b>\$129.99</b> "EASY TO USE, POWERFUL." - JERRY41	<b>BG 50</b>  HANDHELD BLOWER ★★★★★ <b>\$139.95</b> "POWERFUL AND LIGHTWEIGHT." - KEVIN2376	<b>MS 170</b>  CHAIN SAW ★★★★★ <b>\$179.95</b> "IT STARTS EASILY AND RUNS GREAT!" - DICK44
--	--	--	---



Phone (507) 238-1823

Locally Owned and Operated for Over 60 years and 3 Generations!

Open 7 Days a Week



The helpful place.

1300 NORTH STATE STREET, FAIRMONT, MN



# DUCKS UNLIMITED

## News from the Marsh

### MINNESOTA CONSERVATION

## Freeborn Lake Enhancement

**Project Location:** Freeborn in Freeborn County, Minnesota.

**Partners:** Minnesota Department of Natural Resources, The Lessard Sam's Outdoor Heritage Council, The North American Wet-

land Conservation Council and Freeborn County.

**Size/Scope of this Project:** Freeborn Lake is a large, shallow lake that historically hosted many waterfowl and other wildlife. Unfortunately, it be-

came degraded with very poor water quality and few submerged aquatic plants. At 2,222 acres with an average depth of less than 4 feet and maximum depth of only 7 feet, aquatic plants should grow throughout the basin. The outlet was read-

ily bypassed by common carp, but excluded desirable predator fish such as northern pike, exacerbating the lake's problems.

**Goals of Project:** The purpose of

this project is to enhance Freeborn Lake through the construction of a new variable-crest water control structure on the lake outlet. This structure will provide the Minnesota DNR with the ability to conduct water level draw-

downs to remove rough fish, consolidate bottom sediments and nutrients, and allow aquatic plants to germinate. To prevent rough fish from reentering the lake in the future, a high-velocity tube fish barrier was also installed.

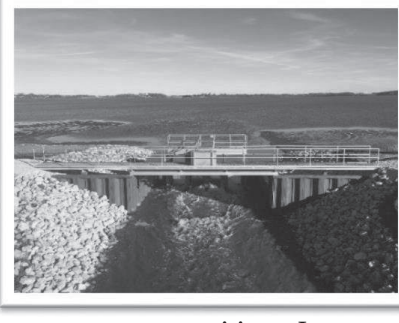
**Wildlife Benefits:** This newly enhanced shallow lake will provide clear water with abundant aquatic plants and invertebrates to both migratory and breeding waterfowl.

**Human/Social Benefits:** Enhancement of this shallow lake will undoubtedly improve its water quality allowing for more public recreational

opportunities. Increased waterfowl presence will also provide more hunting and birdwatching opportunities. This successful project will be Dedicated in the summer of 2020.

**Current Status:** The lake is currently refilling following its second winter of drawdown.

**Approximate Cost:** Total cost of this project will approach \$3 million.



**A salute to the Martin Soil and Water Conservation District and area conservation farmers!**

**ENHANCE the landscape! HELP conserve energy! FIGHT air pollution! CONTRIBUTE to a better environment! PREVENT soil erosion! REDUCE noise pollution! PROVIDE a home for wildlife!**



CSB OPERATIONS

TRUMAN, MN | (507) 776-2551  
325 HIGHWAY 15 SOUTH

DEEREQUIPMENT.COM



- New Steel Sales
- Welding Repair Service
- Custom Design & Fabrication

507-235-6230 • Hours: Mon-Fri 8 a.m. - 5 p.m.  
dustin@wiedwelding.com

## Double D Dispatch

Fairmont, Minnesota  
**507-728-8836**

**For all your livestock hauling needs!**



- Installation
- Repair

815 E. Blue Earth Ave.  
Fairmont, MN

**507-238-9741**  
**1-800-551-2189**

Steve Petrowiak,  
Owner



**Ground Breaking ...**

Drainage Solutions  
Leadership  
Innovative Ideas  
Performance  
Support  
Value  
Sustainability

1001 Timberlake Road  
Fairmont, Minnesota  
Call (507) 238-4791



330 S. Central Ave.  
Truman, MN  
**507.776.5221**

**See us for Individual & Business Tax Planning & Preparations**

*Services Built & Designed to meet your tax needs!*



Innovative International Independent Integrity

POULTRY, SWINE & RUMINANT NUTRITION

**DEVENISH**  
The Agri-Technology Company

www.devenishnutrition.com  
507-235-5116



**Saluting Martin Soil and Water Conservation Farmers**

Hans Hinrichsen,  
Agronomist

Cell (507) 236-3191  
hans.h@heftyseed.com

1025 Fairview Ave.  
Fairmont

Work (507) 235-3422  
www.heftyseed.com

## Baarts Trucking

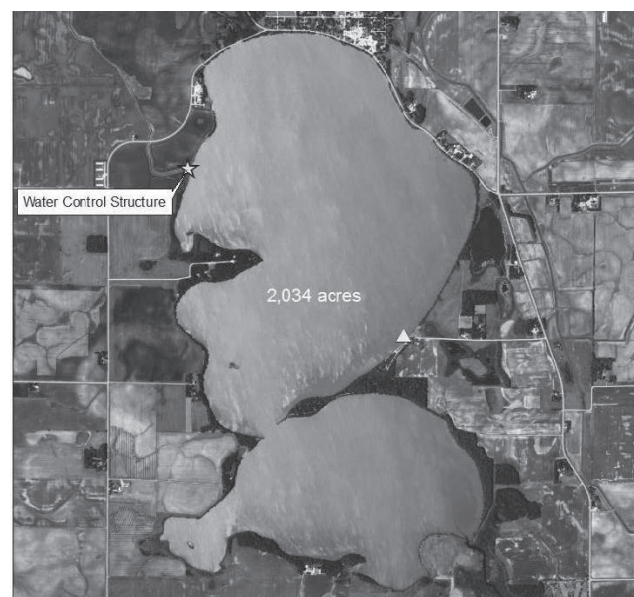
Northrop, MN

Dispatch  
**507-776-8161**

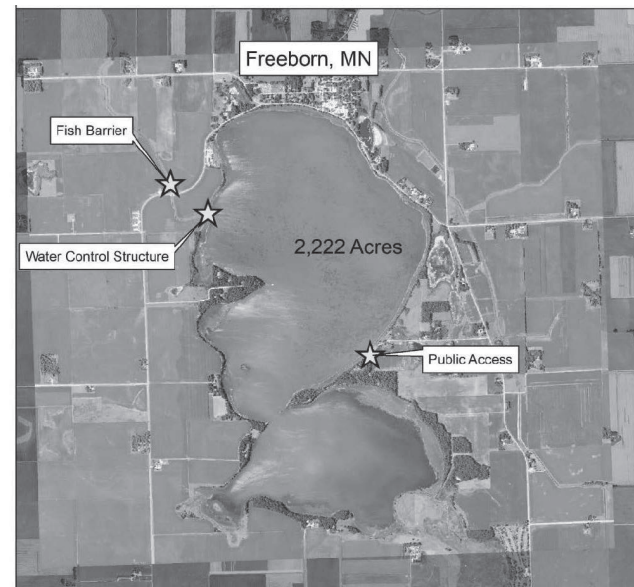
Business Office  
**507-776-4436**

Local &  
Long Distance  
Trucking

## Before Drawdown



## After Drawdown



MINNESOTA DEPARTMENT OF NATURAL RESOURCES



**LIVING LAKES**



John Korsmo, Agent  
403 S. State Street  
Fairmont, MN 56031  
Bus: 507-235-3397  
john.korsmo18jj@statefarm.com

**When "That will never happen to me" happens.**

**GET TO A BETTER STATE™. CALL ME TODAY.**



800 W. Lake Ave • PO Box 788 • Fairmont, MN  
**507.235.6909 • www.aglabs.com**

**PetersonAnthony**  
Insurance Agency, Inc.

Fairmont  
and  
Trimont

507-238-2008 ~ 800-336-6037  
1501 S. State St. - Suite 250 - Fairmont, MN  
www.petersonanthony.com



## A Word From the SWCD Board Chairperson

By Linda Meschke, 2020 Martin SWCD Chairperson

### For January 2020 Conservation Update

Martin County – what a great place to live if you appreciate the natural resources. Whether you feed the birds, fish any of our numerous lakes, gar-



den, farm, enjoy hiking or hunting our numerous recreation and wildlife areas there are abundant opportunities to get out and experience the county's natural resources.

The Martin Soil and Water Conservation District [SWCD] serves all residents in Martin County to protect the soil and water resources in the county. These activities vary but center around providing education, technical and financial resources to residents. If a resident is interested in some aspect of natural resources, contact one of our staff to help understand the issue or circumstance. If they do not know the answer directly, they can refer you to a reliable source. There is no charge to utilize the SWCD services unless you are receiving funding for a specific project where cost sharing may be required. All programs of the SWCD are voluntary.

During 2019 the Martin SWCD had a budget just under \$700,000. Funds come from several sources, mainly state or federal grants. SWCDs are not a taxing entity. While

part of those dollars pay for staff, a significant amount is allocated to projects on the land in cooperation with willing landowners. Project funds include design, engineering, survey, supplies, equipment costs [such as use of a backhoe] and material [such as riprap] required to complete the specific project. Example projects include waterways, buffers, cover crops, reduced tillage, farmstead

shelter belts, pollinator plantings, drainage management practices [BMPs], riparian management, wetland restoration and providing technical assistance for CRP and CREP. This is just a short list, other articles in this Conservation Update describe additional projects and activities of the SWCD. Check out the SWCD website at [www.martinswcd.net](http://www.martinswcd.net).

Take time this winter and explore the natural resources of the county. Repeat. Repeat. Repeat.

## State Fair/Farm Bureau seek Century Farm Apps

Minnesota families who have owned their farms for 100 years or more are invited to apply for the 2020 Century Farm Program. Produced by the Minnesota State Fair in conjunction with the Minnesota Farm Bureau Federation, the Century Farm Program was created to promote agriculture and honor historic family farms in the state. More than 10,500 Minnesota farms have been honored since the program began in 1976.

Family farms are recognized as a Century Farm when three requirements are met. The farm must be: 1) at least 100 years old according to authentic land records; 2) in continuous family ownership for at least 100 years (continuous residence on

the farm is not required); and 3) at least 50 acres and currently be involved in agricultural production.

A commemorative certificate signed by the State Fair Board of Managers President, Minnesota Farm Bureau Federation President Kevin Paap and Governor Tim Walz will be awarded to qualifying families, along with an outdoor sign signifying Century Farm status.

Applications are available online at [mnstatefair.org/about-the-fair/awards-and-recognition/](http://mnstatefair.org/about-the-fair/awards-and-recognition/); at [fbmn.org](http://fbmn.org); by calling the State Fair at 651-288-4400; or at statewide county extension and county Farm Bureau offices. The submission deadline is Monday, March 2. Recipients will be announced in

May. Previously recognized families should not reapply.

Information on the Century Farm Program will be available at the

Minnesota Farm Bureau exhibit during the 2020 Minnesota State Fair. A Century Farm database is also available at [fbmn.org](http://fbmn.org).



**Put the experience of our sales associates to work for you. We can help with buying or listing your home or ag property in Fairmont and the surrounding communities.**



Marilyn



Sara



Tammy



Arica



Julie



Suzi



Shelly



Cavers Realty has been serving the Fairmont area for over 40 years. It is our commitment to provide the highest degree of expertise, market knowledge and personalized service. We are dedicated in helping you with all your residential and commercial needs.

## Cavers Realty, Inc.

1140 Torgerson Drive | Fairmont, MN 56031 | 507.238.4496  
[www.CaversRealty.com](http://www.CaversRealty.com) | [www.Realtor.com](http://www.Realtor.com) 

[www.CaversRealty.com](http://www.CaversRealty.com) | [www.Realtor.com](http://www.Realtor.com)

### For all your electrical needs...

- New construction
- Remodeling
- Residential
- Commercial
- Industrial • Farm



Since 1952

## DeWar Electric, Inc.

724 E. Blue Earth Ave., Fairmont  
(507) 235-6677

## CRACKED OR BUCKLED WALLS?

**FREE ESTIMATES: We'll inspect your basement and recommend the right solution! All of this at no obligation and free of charge!**

Convert your wet basement into a dry, usable area. We will tailor a complete system to meet your needs.

- Basement Drainage
- Basement Wall Bracing
- Buckled Walls
- Basement Wall Straightening
- Foundation Repair & Replacement
- Cracked Walls
- Roofing
- Interior Tiling

**Tennyson** CONSTRUCTION  
"WET BASEMENT SPECIALISTS"

1- 800-658-2501  
(507) 776-5201  
230 West Ciro St.  
Truman, MN 56088

Serving 43 counties in Southern Minnesota & Northern Iowa  
 A Division of Tennyson Construction • Truman, MN LIC NO. BC740801

## See us for your complete fertilizer needs!



### Crop Protection Products Protecting Your Yield

## Nutrien Ag Solutions™

Crop protection technology is becoming increasingly more complex. You know the importance in modern agriculture of understanding the exact effect of every product used on your crops. Making it even more complicated, you have to think about the interaction of multiple crop protection products applied in the same field.

**"We're there to work with you through these challenges."**

### Crop Nutrients - The Key to Your Success

Fertilizer is a cornerstone of our business and has been for well over 100 years. Fertilizer allows us to help you improve your production by restoring nutrients to your soil. The result? Something we can all be proud of - an increased ability to feed the world

### Profit From Our Experience!

## Nutrien Ag Solutions™

East Chain, MN  
(507) 773-4241  
1-800-944-0083



# What's in your water?

You could give your people

## Culligan Water™

Ask about our whole house water makeover!

**Free Water Analysis, Call Today!**  
[www.CulliganFairmont.com](http://www.CulliganFairmont.com) • 507-238-4451



# Seeding Oats

## Guest Columnist

Darwin Anthony, Business Owner, Artist, Writer



It was a sure sign of spring when I was a boy. My father would get the end gate seeder out of the granary and mount it on the back of the triple box, a wooden grain box, that was mounted on a high wheeled running gear. The wheels were high, with wooden spokes, with the outside of each wheel having a steel rim. The wagon was the same as what the pioneers used on their prairie schooners

as they traveled across this very area. Each wheel had a hub in the middle and they needed to be greased. The term axle grease comes from these wheels. The wheel was removed, using a square type wrench, a wrench that was always lost around our farm as I remember it, and the axle grease was spread over the steel axle with a stick, taking the grease out of a pail that it came in. I remember this being one of my first helping jobs when I was a boy. My father would hold the wheel and watch me,

standing there smoking his pipe.

Once the wagon was ready to go the end gate seeder, my father always called it a shot gun seeder for some reason, was put into the back of the wagon. It slid down between the boards where the regular end gate of the wagon usually was. It was heavy and took two people to guide it and lift it. The shape of the seeder was something that a farm boy would always remember for it had a bigger hopper that the oats were shoveled in and then a smaller hopper for the grass seed if you were seeding alfalfa or other grasses. A chain was then put around the back wheel on the left side of the wagon and fit onto the seeder. It was a large gear like thing that

was left on the wagon all year long. I have my father's wheel gear as an antique which I have hung on our garage as a conversation piece. It is special to me as it reminds me of working with my father and our conversations.

this wonderful time was the noise for the seeder made a grinding noise. It was the only noise that you could hear, other than the horse's feet hitting the ground. It was important to keep the seeder full and someone filled it from the wagon



Once the wagon was ready we waited for the right day to plant. We would plant directly into the last year corn stalks with the wagon going down certain rows. I would ride in the wagon box, as my father would drive the horses, keeping them on the right row so that the seeder could throw the grain and seed the needed distance. We would drive and drive and sometimes my father would let me drive the horses. I remember that their names were Maude and Pearl. They had been taught to voice commands and they were use to my father's voice. I have to say that they did not listen to me very well so I just drove them by the lines. What I remember most about

with a scoop shovel. It was done on the move and the seed oats had to be put into the right hopper. If they would be spilled into the grass seed hopper they were bigger in size and would plug the seed hole for the smaller grass seed. I believe the seeder took eight rows of corn at a time. It was easy to seed the grain but the grain had to be covered. This was done with a disc, usually with a tractor and a tandem disc that my father was so proud of. After the disc and harrow, used to level the ground, was done we waited for the oats to appear. In a short time the spikes of oats would appear. It was fun to watch it grow if you were a part of the planting.

**Schuster's**

**PRESSURE WASHER SALES & SERVICE**

**LANDA**  
PRESSURE WASHERS

**KÄRCHER**

FLOOR SWEEPERS

NOZZLES  
SOAP  
BRUSHES  
WANDS  
HOSE REELS

NEW  
USED  
HOT  
COLD  
HOSES

**MATT & JEN, OWNERS**

**507-236-2476**

**SCHUSTERSPRESSUREWASHERSALES@LIVE.COM**

YOUR ONE STOP SHOP FOR ALL YOUR PRESSURE WASHER NEEDS!

**819 EAST 1ST STREET, FAIRMONT**

**Grotte Construction**

**Concrete Contractor**

**We know concrete.**

- driveways & patios
- floors & footings
- ICF walls
- colored/stained concrete
- stamped concrete
- concrete resurfacing

Concrete done right. Free Estimates. Call us today.

**Call us today for your Spring projects**

Greg: 507-236-2816  
Dean: 507-238-1400

775 190th Avenue  
Fairmont, MN 56031

**Southern Minnesota's Leading Building Supply Source**

**BoeKett BUILDING SUPPLY INC.**

**Family owned and operated since 2004!**

**For Agriculture Services!**

- ☐ New Construction
- ☐ Barn Remodel
- ☐ 29 Ga. & G90 Steel - 90¢ per sq. ft.
- ☐ PVC Ceiling Liner
- ☐ Extreme Panel Doors & Stainless Steel Doors
- ☐ Glassboard & Aluminum Skin Plywood
- ☐ Premium Grade A Lumber

**ALL IN-STOCK!**

Proud Sponsor of Martin County Pork Producers

**Your Local Dealer!**

- ☐ Controls
- ☐ Ventilation
- ☐ Flex Flow System
- ☐ Curtain & Stainless Steel Hardware
- ☐ Water Systems & Parts
- ☐ PVC & Stainless Steel Bird Netting

**Upon Special Order BULK BINS, FEEDERS other Specialty Parts**

TRUMAN, MN  
106 N. 5th Ave. East  
507.800.1500  
Derik Garry

JACKSON, MN  
1100 Industrial Park  
507.800.1600  
Terry Boesch

FAIRMONT, MN  
709 N. State Street  
507.235.6611  
Brent Putney

**www.boekett.com**

**Toll Free 1.855.210.9001**

**The Ultimate Reverse Osmosis System!**

**Providing you with fresh tasting, crystal clear water.**

These units are more affordable than bottled water and in addition, you have the convenience of great tasting drinking water at your fingertips.

**24 HOUR SERVICE: 235-9009**

**Office Hours:**  
Mon-Fri 7:30 am-5:30 pm;  
Sat 8:00 am-Noon

**DAY Plumbing, Heating & Cooling**

1410 E. Blue Earth Ave., Fairmont, MN  
**www.dayplumbing.com**



# AgBMP Loan Program

The AgBMP Loan Program provides low interest loans to farmers, rural landowners, and agriculture supply businesses. The purpose is to encourage Best Management Practices that prevent or reduce water quality problems.

16,000 Loans Issued!

**The AgBMP Loan Program:**

- Provides loans for projects that help reduce water pollution.
- Provides loans up to \$200,000 with 3% financing for a max of a 10 year term.
- Can be used with cost share programs.
- Funding possible statewide.

**Who Can Get a Loan?**

- Farmers
- Rural Landowners
- Ag Supply Businesses

**What Do We Fund?**

- Manure Storage area's
- Feedlot improvements
- Manure loading and Application equipment
- Planting and Tillage equipment
- Erosion Control Practices
- Variable Rate Technology's
- New or upgrading Septic Systems
- Buffers
- Any other practice that improves water quality!

**BORROWER**  
Overview of the AgBMP Loan Program

**Please visit our website:**  
[www.mda.state.mn.us/agbmlp](http://www.mda.state.mn.us/agbmlp)

All Projects must be approved by a local soil and water Conservation District or a County Environmental Office. Find your local Contact at: <https://app.gisdata.mn.gov/mda-agbmlp/>

In accordance with the Americans with Disabilities Act, this information is available in alternative forms of communication upon request by calling 851-201-0000. TTY users can call the Minnesota Relay Service at 711. The MDA is an equal opportunity employer and provider. File Name: AgBMP Loan Program 2016.indd 9/18/2016

# AgBMP Loan Program

## EXAMPLE PRACTICES

**Conservation Tillage**

- Chisel Plows
- Disk Tillers
- Cultivators
- Planters and Seed Carts
- Rippers
- Soil Finishers
- Strip Tillage
- Ridge Tillage
- Chopper Heads

**Erosion Control**

- Terracing
- Buffer Strips
- Grass Waterways
- Cover Crops
- Sediment Basins

**Wetland Restoration**

- Wetland Restoration
- Shoreline Restoration
- Stabilization
- Planting

**Chemical Management**

- Variable Rate Technology
- GPS Control Systems
- Flow Metering
- Secondary Containment

**Other Practices**

- Flood Control
- Ring Dikes
- Culverts and Diversions
- Well Relocation and Sealing
- Conservation Drainage
- Control Structures
- Bioreactors
- Field Windbreaks
- Irrigation Controls
- Metering
- Drop Heads

**Feedlot Improvements**

- Manure Storage Basins
- Earthen Basins
- Lined Basins
- Concrete Basins
- Slurrystores

**Structural Feedlot Improvements**

- Concrete Slabs
- Scrape Alleys
- Retaining Walls
- Diversions and Curbing
- Pit Aprons

**Landscaping and Diversions**

- Filter Strips
- Natural Buffers

**Livestock Exclusion**

- Cattle Fencing
- Controlled Grazing
- Roof Runoff Control
- Monoslope Feedlot Conversions
- Gutters and Runoff Control

**Composting Facilities**

- Odor Control Practices

**Manure Management**

- Manure Spreading Equipment
- Terragators
- Box Spreaders
- Liquid Manure Spreaders
- Drag Lines
- Fertilization Equipment

**Incorporation Equipment**

- Tanker Trucks
- Skid Steers
- Manure Agitation and Pumping
- Methane Digester

**Septic Systems**

- Mound Septic Systems
- At-Grade Systems
- Septic Repair or Replacement
- New Septic Systems
- Cluster Systems
- Central Sewer Connections

Any Practice that Improves Water Quality!

All projects must be approved by a local Soil & Water Conservation District or Environmental Office. Please Visit our website for more information: [www.mda.state.mn.us/agbmlp](http://www.mda.state.mn.us/agbmlp)

In accordance with the Americans with Disabilities Act, this information is available in alternative forms of communication upon request by calling 851-201-0000. TTY users can call the Minnesota Relay Service at 711. The MDA is an equal opportunity employer and provider. File Name: AgBMP Loan Program 2016.indd 6/18/2016

## Applications accepted for CRP programs

The U.S. Department of Agriculture (USDA) is accepting offers for specific conservation practices under the Conservation Reserve Program Continuous Signup. The USDA Farm Service Agency's (FSA) CRP is a voluntary program that contracts with agricultural producers so that environmentally sensitive agricultural land is devoted to conservation benefits. CRP participants establish long-term, resource-conserving vegetative species, such as approved grasses or trees (known as "covers"), to control soil erosion, improve the water quality and enhance wildlife habitat. In return, FSA

provides participants with annual rental payments and cost-share assistance.

Continuous signup enrollment contracts are 10 to 15 years in duration.

### BIG TRUCK/SEMI REPAIR

#### SPECIALIZING IN

- D.O.T Inspections
- Minor Engine Repair
- Complete P.M. Services
- Beeline Laser Alignments
- Frame Rail Work: lengthen, shorten, painting

\*Warranty All Repairs\*

Trailer welding repair: steel, aluminum, stainless

- Air Conditioner Repair
- Huck Gun Riveting 5/16", 1/4", 3/8"

507-399-3074

BRIAN WANNARKA TRUCK REPAIR & EXCAVATING

MON-FRI 8AM-5PM | 1832 110th STREET • FAIRMONT, MN | SATURDAY BY APPOINTMENT

## Central Advantage, NitrateNow and AgriEdge are helping farmers find a way by...

utilizing the most comprehensive  
precision ag tools in the area



contact us at: [www.cfscoop.com/Central-Advantage](http://www.cfscoop.com/Central-Advantage)



MARTIN COUNTY

# PORK

PRODUCERS

## 2020 BANQUET

### Fairmont Knights of Columbus Hall

### Monday, March 23<sup>rd</sup> - 6:30pm

**Guest Speaker:**  
**Bill Even**

Bill Even is the Chief Executive Officer for the National Pork Board based in Des Moines, IA where he has responsibility for leading Checkoff-funded research, promotion and education projects on behalf of the nation's 60,000 pork producers. Bill and his family own and operate a diversified crop and livestock farm near Humboldt, South Dakota.

MENU

Pork Chops

Prepared by The Martin County Pork Producers!

Sides by Hy-Vee

Admission: \$13

The ticket table will be set up at 5:30 and the meal will be served at 6:30

Reserve Tickets By Calling Joanne Schmidt at (507) 236-7902

2019 Martin County Pork Producers Board Of Directors:

Sarah McCall, Nic Harris, Jayden Garlick, Ethan Thate, Sean Maday, Jeanine Fowler, Renae Thate, Ashley Pinney, Heather Tonkin, Fernando Lima, Mike Bliesmer, Brett Meyeraan, Dan Helvig, Adrienne Brammeier, Dianne Bettin, Summer Stahl, Guy Rudolph, Chase Stahl, Erica Jorgensen, Bethany Miller, Joanne Schmidt, Tim Garry, Dave "Blue" Faber, Andrew Jorgensen

Don't forget to renew your 2020 Membership!

Producer Members

One Year..... \$10

Three Years..... \$25

Associate Members

One Year ..... \$20

Thank you to our 2020 Sponsors



FAIRMONT

PUBLIC NOTICE

OFFICIAL PUBLICATION

NOTICE OF HEARING

TO WHOM IT MAY CONCERN:

NOTICE IS HEREBY GIVEN that the City Council of the City of Fairmont will hold a public hearing to consider proposed Ordinance No. 2020-02.

ORDINANCE NO. 2020-02

AN ORDINANCE AMENDING ORDINANCE NO. 2013-03 OF THE CITY OF FAIRMONT RELATING TO PUBLIC UTILITY WASTEWATER RATES.

WHEREAS, the City Code requires that municipal utilities be provided to consumers at a rate based upon the amount of the utility used or consumed, and;

WHEREAS, the City of Fairmont through the Public Utilities Commission has completed an expansion of the existing Wastewater Treatment Facility to facilitate new treatment requirements, and;

WHEREAS, it will be necessary to amend the current sewer service rate to generate sufficient revenues, to operate, maintain, and extend this system, and provide sufficient debt service to cover the plant expansion, in accordance with the recommendation, and;

NOW THEREFORE, BE IT ORDAINED, by the City Council of the City of Fairmont that Ordinance No. 2013-03 be amended to establish the following fees and guidelines:

1. Residential Fees
- A. The Sewer Service Rate for each residential lot, parcel, building or premises connected to the sanitary sewer collection system shall be as follows based on the water meter size and meter reading for water consumption:
- |                       |                              |
|-----------------------|------------------------------|
| First 100 cubic feet: | \$ 13.45 - 5/8" x 3/4" meter |
|                       | \$ 37.05 - 1" meter          |
|                       | \$ 59.81 - 1 1/4" meter      |
|                       | \$ 84.54 - 1 1/2" meter      |
|                       | \$ 162.35 - 2" meter         |
|                       | \$ 377.15 - 3" meter         |
|                       | \$ 628.74 - 4" meter         |
|                       | \$ 957.38 - 6" meter         |
| Over 100 cubic feet:  | \$ 2.13 / 100 cubic feet     |
| Minimum bill:         | Based on water meter size    |
- B. Wastewater Treatment Infrastructure Charge and Debt Service Charge: All residential customers will be charged a monthly fee of \$ 12.08 per month, in addition to the monthly sewer service fee.
- C. Residential sewer rate for the months of October through May will be averaged to be used as a cap for determining the sewer charge for the months of June through September. If the customer used less water than the corresponding average sewer rate, the sewer charge to the customer will be based on actual usage.
2. Commercial Fees
- A. The Sewer Service Fee for each commercial lot, parcel, building, or premises connected to the sanitary sewer collection system shall be as follows based on meter reading for water consumption:
- |                 |                          |
|-----------------|--------------------------|
| All Consumption | \$ 3.34 / 100 cubic feet |
| Minimum bill:   | \$13.45                  |
- B. Wastewater Treatment Infrastructure Charge and Debt Service Charge:
- A. All commercial customers will be charged a monthly fee of \$12.08 per month, in addition to the monthly sewer service fee.
- C. In lieu of a sewer service fee based on water consumption, the user may, at the user's expense, install and maintain an appropriate recording device to measure and record sewage outflow into the City's system. The recording device must be formally approved by the Public Utilities Commission. Under these conditions, the same fees shall apply as for water consumption. In instances where it can be determined by the City that no portion of the metered water consumption enters the City's sewage works, the installation of such a device may be waived by the City Council.
3. Industrial Fees
- A. Sewage shall be considered industrial if the concentration of one or more of the following constituents is at or above the following in parts per million (ppm):
- |       |                                |         |
|-------|--------------------------------|---------|
| (i)   | Total suspended solids (TSS)   | 250 ppm |
| (ii)  | Biological oxygen demand (BOD) | 250 ppm |
| (iii) | Total Kjeldahl nitrogen (TKN)  | 40 ppm  |
| (iv)  | Phosphorus (Phos) of           | 5 ppm   |
| (v)   | Fat, oil, and grease (FOG)     | 100 ppm |
- B. If a waste is considered industrial, fees shall be assessed individually for each of the specified pollutants discharged to the City's facility on a per pound basis. Industrial fees shall be at the following rates:
- |           |             |
|-----------|-------------|
| PARAMETER | FEE \$ / lb |
| TSS       | \$ 0.8437   |
| BOD       | \$ 0.9968   |
| TKN       | \$ 2.2692   |
| PHOS      | \$ 7.5683   |
| FOG       | \$ 1.3846   |
- C. Wastewater Treatment Infrastructure Charge and Debt Service Charge:
- A. All industrial customers will be charged a monthly fee of \$ 12.08 per month, in addition to the monthly sewer service fee.
- D. If the calculated fee for industrial waste is less than the same volume of waste based on commercial fees, then the commercial fee shall be used as the basis of payment.
- E. Users with industrial sewage will be required to install and maintain devices to measure the sewage strength and flow at no expense to the City. The City will have access to flow metering and sampling equipment.
4. Industrial Pretreatment Agreement Criteria
- A. A customer discharging industrial sewage may be required to enter into an industrial pretreatment agreement with the City before discharging industrial sewage to the City's system. If one or more of the following criteria are exceeded or expected to be exceeded for the industrial discharge on a monthly average basis, an industrial pretreatment agreement will be required.
- i) A BOD mass loading of 500 pounds per day and concentration above 1000 ppm.

ii) A TSS mass loading of 500 pounds per day and concentration above 1000 ppm.

iii) A TKN mass loading of 50 pounds per day.

iv) A P mass loading of 25 pounds per day.

v) A FOG concentration above 100 parts per million.

vi) A pH outside the range of 5.5 to 9.5 standard units.
- B. A pretreatment agreement will be required if the flows and loads vary widely throughout the day.
- C. A pretreatment agreement will be required if an industrial user discharges sewage that creates interference at the City's wastewater treatment plant.

The above rates shall become effective March 1, 2020.

You are further notified said hearing will be held in the City Council Chambers of City Hall, 100 Downtown Plaza, Fairmont, Minnesota on Monday, February 10, 2020, at 5:30 p.m.

BY ORDER OF THE CITY OF FAIRMONT

/s/ Patricia J. Monsen  
Patricia J. Monsen, City Clerk

Published in the Fairmont Photo Press  
January 29, 2020

Continued from page 6

in The Condor from 1961: “Intersexes (gynandromorphs) were birds with supposed abnormal chromosomal complements which had mixed male and female feathers, and sex-inverts were birds undergoing change from one sex to the other — usually



Hen pheasant photo by Brian Schofield of Fairmont.

female to male.”

Q&A

“If birds don’t like milo, why is it in seed mixes?” Milo (sorghum) is used in livestock feed, ethanol production and as feed for birds. Generally, birds don’t eat it. According to the trade group Wild Bird Feeding Industry, economy mixed seed mixes, which usually include milo, account for a third of the market. Single-seed products, such as sunflower seeds, make up 26%. If birds refuse to eat it and it’s nothing more than wasteful filler, why milo? Two words. It’s cheap.

“Why don’t I ever see an owl in a tree?” It’s because they are good at hiding. They excel at blending in and remaining motionless. I typically see them after outraged crows have found them.

“Why were my bird feeders quiet part of the winter?” The winter was well-behaved for a time. Birds forage elsewhere when winter weather is mild with little snow or ice covering natural foods. Birds need fewer calories during warmer weather to maintain body temperatures.

Thanks for stopping by

*“If you think nobody cares if you’re alive, try missing a couple of car payments.” — Earl Wilson*

*“I believe the world is incomprehensibly beautiful—an endless prospect of magic and wonder.” – Ansel Adams*

Do good.  
© Al Batt 2020



**We believe in you.**  
Member FDIC. And the community.

*This Week's Martin County*  
**REAL ESTATE TRANSFERS**  
*brought to you by*

HOME LOANS | IMPROVEMENT LOANS  
FAST, FRIENDLY & COMPETITIVE

**First Farmers & Merchants**  
NATIONAL BANK

www.ffmbank.com

**114 South Park Street | Fairmont | 507-235-5556**

**WARRANTY DEEDS**

Bonnie J. Vetter, Ramie M. Vetter to Brittney Kaye Hinz, Joshua Kuhl-Hinz, Lot 1, Block 1, 1st Ext Hillcrest Addition

Brian P. Reese, Shannon M. Reese to Amber Szafryk, Rodney Szafryk, W50' of Lots 1 & 2, Block 7, 1st Ext Wards Central Addition

Gary Busselman, Nancy Busselman, Allan Kittleson, Marlene R. Kittleson, Rodney Kittleson, Tami Kittleson, Joan Pearson to Fox Lake Conservation League Inc., PT SW¼ and NW¼, 36-103-33

Gary L. Miller, Janet C. Miller to Fox Lake Conservation League, Inc., N 46AC in SE¼, 28-103-32

Gary D. Dial, Ortrude K. Dial to Dana Lee Scholl, Jeffrey Dustin Scholl, PT W7' strip of land in NW¼ Govt Lot 1, 17-102-30

**QUIT CLAIM DEEDS**

John B. Frerichs, MaryAnn Frerichs to John B. Frerichs, MaryAnn Frerichs, 170' X 250' of Lot NT, OL 9 Campbells Addition Welcome

2019 Castle LLC to Scott Stith, Lots 14,15 and 16, Block 1 and EX S16' of Lot 17, Block 1, Original Plat Northrop

Jesse J. Murphy to Kelsey Marie Murphy, PT w/50' Wide Easement, NW¼NW¼, 19-103-31

**TRUSTEE DEED**

Carolyn S. Hilgendorf Revocable Trust, Carolyn S. Hilgendorf Trustee to James M. Punch, Gina Y. Willard, Lot 14, Block 1 and S8' of Lot 15, Block 1, 1st Ext Fred Stade Amber Lake

## Area teachers among Teacher of Year candidates

The 2020 Minnesota Teacher of the Year will be chosen from a field of 134 candidates. These candidates have accepted their nominations and completed the required materials to become eligible for the honor.

This year's program will name the 56th Minnesota Teacher of the Year, celebrating the tradition of excellence in teaching in Minnesota. Eligible candidates include pre-kindergarten through 12th-grade, Early Childhood Family

Education and Adult Basic Education teachers, from public or private schools.

The 2020 Minnesota Teacher of the Year will be announced Sunday, May 3rd, at Saint Paul River-Centre. Over the coming weeks, a 25-member panel of community leaders will name a group of semifinalists and finalists.

Area teachers include:

- Jerry Brooks, Fairmont Area Schools
- Erica Colby, Jackson County Central School District

**Cemetery Caretaker needed for 2020 mowing season****Lake Fremont Cemetery - Dunnell, MN**

- must carry \$1,000,000.00 liability insurance
- must have own equipment
- must be 18 years of age or older - NO minors

**Questions?**

Please contact Dale Knuth, Chairman at 507-848-5210

Send bid and copy of current commercial liability insurance to:

Lake Fremont Cemetery  
c/o Dianne Swanson, Clerk  
632 10th Avenue  
Alpha, MN 56111

Bids to be in Clerk's office by March 1, 2020 for consideration

## New AT&T store plans grand opening celebration



Officials from AT&T Minnesota, along with local officials will be holding a grand opening celebration and ribbon cutting on Thursday, January 30th at 10:00 a.m.

The new AT&T store is located at 1023 E. Blue Earth Avenue, on the corner of Blue Earth Avenue and North State Street (Highway

15). Officials on hand for the open house and ribbon cutting will include: Valerie Bruggeman, Director, AT&T Minnesota; Bryce Peterson, DOS, AT&T Minnesota, Fairmont Area Chamber of Commerce, Fairmont Ambassadors and other local officials.

## CREST Lunch and Learn to focus on U.S. Presidents

Which U.S. President was never married? What American President has won a Grammy award? Which Presidents passed away on July 4th?

The answers to these questions and much more will be revealed at the "Lunch & Learn" event sponsored by CREST.

It will be held Wednesday, February 5th at 11:00 a.m. at the Senior Citizens

Center, located at 21 East 1st Street in Sherburn.

The program this month will look at interesting facts and trivia about our U.S. Presidents. Following the presentation, a soup and sandwich lunch will be served with brownies for dessert. Donations are welcome to defray costs.

Anyone in the area is invited to join in the fun and socializing.

## Fairmont library to host "Toddler Tinker Lab"

The Fairmont Library will host monthly Toddler Tinker Labs on Wednesdays at 9:30 a.m.

Dates are: February 5th, March 4th, and April 8th.

The "lab" is designed to allow toddlers to explore, grow and create with a

variety of activities each month...the best part? Leave the mess behind at the library!

Call the library at 238-4207 with questions. No registration is required and this event is free and open to the public.

## UPCOMING AUCTIONS

**SATURDAY, APRIL 18, 2020 DOORS OPEN AT 4PM - WHAT A KNIGHT MARTIN LUTHER DINNER AND FUND-RAISING AUCTION**

**NEW PRIVATE LISTING!** 94.06 Acres +/- located in Section 26 of Rolling Green Township, Martin Co., MN. For Sale by Private Treaty! Please Contact Dustyn Hartung 507-236-7629 for Price, Terms, Etc.

**PRIVATE LISTING-** 592.08 Acres +/- in Galena & Cedar Twps, Martin Co., & Long Lake Twp, Watonwan Co., MN for sale by private treaty. Contact Kevin Kahler 507-920-8060 or Dustyn Hartung 507-236-7629 for price, terms, etc.



- Allen Kahler, 841-3466
- Ryan Kahler, 764-4440
- Kevin Kahler, 235-5014
- Doug Wedel, 236-4255



For upcoming auction flyers:  
auctioneeralley.com

**105 South State Street, Fairmont, MN (507) 238-4318**

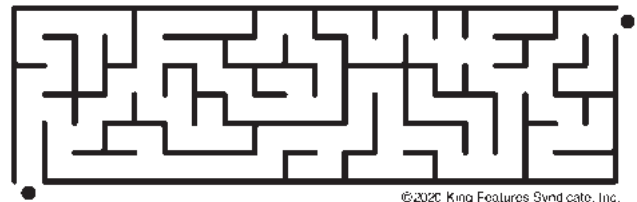
## DEATH notices

January 18 - Jeanette M. Means, 83, Fairmont Lakeview Funeral and Cremation Service  
January 18 - Randall L. Green, 63, San Diego, CA Lakeview Funeral and Cremation Service  
January 24 - Dorothy J. Simpson, 96, Fairmont Lakeview Funeral and Cremation Service  
January 25 - Lee A. Meyer, 78, Sherburn Kramer Family Funeral Home  
January 25 - Earl Kurtzweg, 89, St. James Kramer Family Funeral Home  
January 25 - Harris A. Eng, 89, St. James (formerly of rural Odin) Kramer Family Funeral Home

**In Memorium****One Year Ago This Week**

January 20 - Robert L. Champine, 91, Ceylon  
January 21 - Arven W. Fritz, 92, Ceylon  
January 22 - Melva J. Schultze, 90, Wilbert  
January 22 - Dennis M. Weir, 83, Fairmont  
January 22 - DeElda B. Rose, 91, Fairmont  
January 22 - Barbara C. Mager, 70, Plymouth  
January 23 - Raymond "Swede" Theobald, 84, Sherburn  
January 24 - Agnes L. Carter, 101, Fairmont  
January 24 - Eugene R. Roloff, 90, Fairmont  
January 24 - Irene G. Tietje, 81, rural Fairmont  
January 26 - Betty Wedner, 84, Sherburn  
January 26 - Marion Goldencrown, 80, Trimont  
January 26 - Dr. Gerhard M. Feia, 92, Fairmont

## Kids' Maze



©2020 King Features Syndicate, Inc.

## MARTIN COUNTY LEGAL PUBLICATIONS

### NOTICE OF PUBLIC HEARING FOR ISSUANCE OF AN OFF-SALE INTOXICATING LIQUOR LICENSE

The Martin County Board will hold a Public Hearing on February 4, 2020 at 9:05 a.m. in the County Commissioner's Room located in the Courthouse. The purpose of this hearing will be to consider the issuance of an off-sale intoxicating liquor license to Ghost Town Tavern located at 1203 260th Ave, Granada MN 56039.

Interested parties are encouraged to attend.

By Order of the Martin County Board of Commissioners.

Published in the Fairmont Photo Press  
January 15, 22, and 29, 2020

## FAIRMONT PUBLIC NOTICE

**OFFICIAL PUBLICATION**

TO WHOM IT MAY CONCERN:

**PLEASE TAKE NOTICE** that the City Council of Fairmont, MN will meet in the council chambers located at 100 Downtown Plaza on the 10th day of February 2020 at 5:30pm, to consider potential improvements to the municipal wastewater system. Planning for improvement options that are being considered include three phases of potential needs over 20+ years including Phase 1 bio-solids improvements, Phase 2 liquid treatment improvements, and Phase 3 potential future regulation improvements. Such persons as desire to be heard with reference to the proposed improvements will be heard at this meeting.

A complete copy of the Wastewater Plant Facility Plan may be viewed at the City Engineer's office.

BY ORDER OF THE CITY OF FAIRMONT

/s/ Patricia J. Monsen

Patricia J. Monsen, City Clerk

Published in the Fairmont Photo Press  
January 29, 2020

## Coming Soon

### ELDON BEENKEN FARM EQUIPMENT AUCTION

Wednesday, February 12

Go to [www.clarkauctions.com](http://www.clarkauctions.com)

Steve Fausch Auctioneers • 507-235-5892



## City Council discusses Fire Department concerns

Discussion at the Monday, January 27th Fairmont City Council meeting at one point focused on the Fairmont Fire Department and how it selects its leadership positions.

Council member Tom Hawkins has been working with the League of Minnesota Cities (LMC) after it sent out a memo concerning possible liability issues with having the firefighters themselves elect their leadership (ie: Chief, Assistant Chief, etc.). It was pointed out that the memos put out by the LMC are "best practices" to improve the processes of the cities that it works with.

A large contingent of present and retired firefighters was present at Monday's council meeting. Hawkins stated to the council that current Fairmont City Code allows for the firefighters to elect their own leaders, but the code also states that the Fairmont City Council directly oversees the fire department and this could potentially open the city up for legal issues if a vote of the firefighters is ever challenged.

Fairmont Fire Chief Brandon Scott spoke to the council about the differences between the hiring process, which is done differently than the election of

department leaders. Scott stated that the Fairmont Fire Department is different from other larger city fire departments in that "We have other jobs that we work at to support our families besides dedicating our time to the fire department to uphold the safety of the Fairmont and surrounding area citizens." Scott went on to say that he had been working with former Fairmont Administrator Mike Humpal about changing some of the processes in the fire department, but that stopped when the city administrator position became vacant.

After further discussion, a motion was made and unanimously passed to have the interim city administrator and Chief Scott

resume the process that had begun to recommend ways to "clean up the code." They will also meet with legal counsel on ways to update the process to come more in line with LMC recommendations.

In other council business Monday night it was announced that there will be eight positions that will be opening up on the Fairmont Charter Commission. The current eight people are eligible to reapply, and the city of Fairmont will take nominations of others for the positions up until March 16th, 2020. If you would like to be considered for a seat on the Charter Commission, contact Patty Monsen at Fairmont City Hall.

## City of Lakes Garden Club to meet February 5

City of Lakes Garden Club of Fairmont will meet at 12:30 p.m. Wednesday, February 5th, 2020 at Grafitti Corner, in Fairmont. Visitors and new members are always welcome, but please call ahead of time so that accommodations are adequate. Please call Leslie Walkowiak at 651-895-6578 to RSVP your attendance.

There will be a business meeting followed by an informative presentation on Methods of Gardening - "Vertical Aeroponic Tower Gardening". Our civic project for the month will be providing valen-

tine table decorations for a local nursing facility.

Our next meeting in March will be held Wednesday, March 4th, 2020 at 4 East Ken Rue Lane, Fairmont. The presentation topic for this meeting will be Methods of Gardening - "Adventures in Non-Traditional Gardens".

If you are interested in becoming a member or would like more information about the Garden Club, please call Leslie Walkowiak at 651-895-6578. You can also find us on Facebook.

**PhotoPress**  
Only good news

## Picture Peddler

Deadline Mon at Noon for Wed's publication

1 week, your picture and 20 words for \$17; Run 2 weeks, your picture and 20 words for \$27. We'll take the picture at the Photo Press for an additional \$3.50



**2014 CHEVROLET 2500**  
LTZ package, loaded, crew cab,  
88,000 miles, \$29,500  
1st Street AutoMart, 827 E. 1st St., Fairmont, MN  
507-920-5675 • 507-238-2999



**FOR SALE OR RENT**  
3,880 square foot building in Fairmont  
Inquire at Jake's Carpet or  
call Matt: 507-236-6695



**2008 FORD TAURUS X**  
AWD, leather, loaded, clean local trade,  
133,000 miles, \$4,995  
Welcome Motor Co., 1310 N. State St.,  
Fairmont, MN, 235-3447, welcomemotorcompany.com

## THE MARKETPLACE

PROMOTE  
SELL  
ADVERTISE

**\$16**  
PER WEEK

**FLEET and FARM SUPPLY**

**ACE Hardware**

**STIHL**  
Full Line Sales & Service Dealer!  
f FAIRMONT MN  
1300 NORTH STATE ST.

See us for all types of  
**Small Engine Service & Repair**

Pick-Up and Delivery (Fairmont Area) **238-1393**

**OLSON**  
RENTALS  
Husqvarna HUSTLER  
914 North State Street  
Fairmont, MN  
www.olsonrental.com

*Custom Window Blinds*

FREE Cordless Upgrade on select window coverings! (effective 1/1-4/20/20)  
Call Paula today for details and to schedule an in-home consultation!  
**507-236-4951**  
I look forward to helping you find the perfect view!



**POOLEY'S SCRAP IRON**  
620 N. Main  
Fairmont, MN  
(507) 238-4391

RECYCLE  
ALUMINUM  
CANS HERE

**HOURS:**  
Monday-Friday  
7:30 a.m.-12 noon  
& 1-4:30 p.m.  
Closed Saturday

**Paulson**  
HEATING & COOLING

**TRIMONT, MN**  
507-236-2443

**Josh Paulson**  
paulsonhc@gmail.com  
PO Box 73 | Trimont, MN 56176  
Installation and Service of  
Residential Heating, Cooling &  
Geothermal Systems

LIC# 2063954B  
**BENJAMIN ROSA ROOFING**  
RESIDENTIAL REMODELING  
FREE ESTIMATES

**507-399-9570**

**WET CRACKED OR BUCKLING BASEMENT SPECIALISTS**  
◆ Interior Tiling  
◆ Guaranteed  
◆ Foundation Repair  
Systems work in finished or unfinished basements  
**WE SOLVE BASEMENT PROBLEMS!**

Free Estimates • Licensed  
Insured • Locally Owned  
**1-800-658-2501 or (507) 776-5201**  
A Division of Terryson Construction • Truman, MN • Ctr. Lic. #740801

**Farmland Tree Service**

• Tree Trimming & Removal  
• New & Old Grove Trimming  
• Stump Removal & Cleanup  
• Lake Bank Trimming • Gutter Cleaning  
Insured and Free Estimates  
SCOTT • 507-236-3951 • 507-764-4879  
Office: 311 Delana Street, Sherburn, MN  
Still serving the area after 30 years.  
Arborist by trade.

**AERIAL PROFESSIONAL TREE CARE**  
**KIMMET FAMILY TREE SERVICE**

24 Hour Emergency Storm Damage

• Competitive Pricing  
• Farm Groves  
• Tree Trimming, Removal & Risk Assessment  
• Over 70 Years Professional Experience

**FIREWOOD FOR SALE** Free Estimates  
Insured & Bonded

Call Dave (507) 848-7633  
or Mike (507) 238-1724 • Fairmont, MN

**Veterans**  
Linkage Line  
your link to experts  
minnesotaveteran.org | 1-888-LinkVet (546-5838)

Do you know your benefits?  
Let us serve you.

**Martin County Veterans Services:**  
**507-238-3220**

**RENT THE PARSONAGE!**

We're the perfect place to host your gathering.

• Receptions  
• Reunions  
• Meetings  
• Parties  
• & More

Call Martin County Historical Society's Pioneer Museum for details: 507-235-5178

Allan Eppens  
**Eppens Painting, LLC**  
FULL SERVICE PAINTING

**507-235-6007**  
or  
**507-236-0066**  
Fairmont

**TORO • TORO • TORO • TORO • TORO**

**TORO Sales and Service**

Count on it.  
• Small Engine Repairs on all Makes & Models  
• Local Pick Up & Delivery Available

The **BOAT HOUSE**  
903 Lake Ave. • Fairmont, MN  
(507) 235-6931



**JL Computers**

206 E. 3rd St. | Fairmont, MN

**(507) 235-9418**

**ChemDry CleanRite ChemDry**  
Drier. Cleaner. Healthier.

(507) 235-3765 • (507) 236-0713  
cvosschemdry@gmail.com  
Fairmont, MN  
**Services Include:**  
• Carpet & Furniture • Tile Floors  
• Fire & Smoke Cleanup  
• Entrance Rugs • Janitorial Service  
The experts in residential and commercial cleaning.  
27 years in service!

Your local  
**CERTIFIED**

**HEAT & GLO FIREPLACES**

Dealer and Installer

**tcs** Total Comfort Systems  
300 Downtown Plaza  
Fairmont  
507-235-5278

**Advertise Your Business Here!**  
Interested in advertising your business with a Marketplace Ad?

**We reach over 12,461 readers**

Call Randy in our Advertising Department:

507-236-6644 or e-mail: ads@fairmontphotopress.com

Serving you since 1963! **PhotoPress**  
Only good news  
112 E. 1st St. • Fairmont, MN • 238-9456 • M-F 8 to 5



# PhotoPress Classifieds

**FAIRMONT PHOTO PRESS** classified advertising **deadline is MONDAY noon.** Call **507-238-9456** and have your credit card number ready; fax **507-238-9457**; e-mail **frontdesk@fairmontphotopress.com**, or stop in at **112 East 1st Street.** Payment must accompany all classified ads.

## 3 Notices

**ST. JUDE'S NOVENA** - May the most Sacred Heart of Jesus be adored, glorified, loved and preserved throughout the world now and forever. Sacred Heart of Jesus, pray for us. St. Jude, Worker of Miracles, pray for us. St. Jude, Helper of the Hopeless, pray for us. Say this prayer 9 times a day; by the 8th day, your prayers will be answered. It has never known to fail. Publication must be promised. Thank you St. Jude. *38-1tcc-3*

**AMAZON RETURN QR CODES** - The Photo Press is unable to scan QR codes from Amazon. Please email or call Amazon to have them email you the shipping label for UPS.

**Interested in advertising your business with a Display Ad?** We reach over 12,461 readers. Call Randy in our Advertising Department 507-236-6644 or e-mail: **ads@fairmontphotopress.com**, serving you since 1963!

## 7 Help Wanted

**WE ARE LOOKING FOR A** honest, hard working server to join our Cup N'Saucer family! Approximately 30 hours/week, Tuesday - Saturday and will consist of day shifts, with 2 - 3 opening shifts each week (6:30am). Occasional evening availability required, depending on business needs. Please email **sherburncupnsaucer@gmail.com** to express interest in the position. *38-1tc-7*

**ROSE LAKE GOLF COURSE** MAINTENANCE/ Part-time. Help with mowing and maintaining greens, tees, fairways and rough raking and maintaining traps. Cleaning golf carts. Starting at \$8.50/hr. Call Dave Hytry, 858-254-1540. *36-3tp-7*

**DRIVERS: DEDICATED MARSHALL, MN No-Touch Openings! \$2,000 sign-on bonus, first \$500 paid at 1st dispatch, \$1,500 paid at 6/mo.! All appointments are set, preloaded drop and hook loads. Excellent pay! Average 2400 miles weekly. Full comprehensive benefits, holidays, paid vacation, VIP Platinum Orientation and more! 1yr Class-A CDL tractor/trailer experience call today: 855-971-9851. 36-5tcc-7**

## 9 Wanted to Buy

**BUYING AND SELLING** any gold and silver items, collector coins, diamonds, gold jewelry, silver dollars, rare currency. No collection too big. Kuehl's Coins, Fairmont, Minnesota, 507-235-3886, 507-399-9982, open 10a.m. - 6p.m. *37-3tp-9*

## 10 Apartments For Rent

**KRUEGER REALTY:** one or two bedrooms, some with heat provided. Garbage, water, on-site laundry. EHO. Call Krueger Realty at 507-235-9060. *25-tfn-10*

## 23 Equipment For Sale

**CLARK 5,000 POUND LIFT** capacity, 20ft lift, electric with battery charger. 507-236-4584. *38-3tp-23*



**INDEPENDENT FREE PAPERS OF AMERICA CLASSIFIEDS**

**READER ADVISORY:**  
The National Trade Association we belong to has purchased the below classifieds. Determining the value of their service or product is advised by this publication. In order to avoid misunderstandings, some advertisers do not offer employment but rather supply the readers with manuals, directories and other materials designed to help their clients establish mail order selling and other businesses at home. Under NO circumstance should you send any money in advance or give the client your checking, license ID, or credit card numbers. Also beware of ads that claim to guarantee loans regardless of credit and note that if a credit repair company does business only over the phone it is illegal to request any money before delivering its service. All funds are based in US dollars. Toll free numbers may or may not reach Canada. ADVERTISE to 10 million homes across the USA! Place your ad in over 140 community newspapers, with circulation totaling over 10 million homes. Contact Independent Free Papers of America (IFPA) at **danielleburnett-ifpa@live.com** or visit our website **cadnetads.com** for more information.

**CARS/TRUCKS WANTED!!!** All Makes/Models 2002-2018! Any Condition. Running or Not. Top \$\$\$ Paid! Free Towing! We're Nationwide! Call Now: 1-888-985-1806

**Health & Fitness**  
**GENERIC VIAGRA and CIALIS!** 100 Pills \$99.00 FREE Shipping! 100% guaranteed. 24/7 CALL NOW! 888-889-5515

**Miscellaneous**  
Earthlink High Speed Internet. As Low As \$14.95/month (for the first 3 months.) Reliable High Speed Fiber Optic Technology. Stream Videos, Music and More! Call Earthlink Today 1-855-520-7938  
Applying for Social Security Disability or Appealing a Denied Claim? Call Bill Gordon & Assoc., Social Security Disability Attorneys, 1-855-498-6323! FREE Consultations. Local Attorneys Nationwide [Mail: 2420 N St NW, Washington DC. Office: Broward Co. FL (TX/NM Bar.)]  
Become a Published Author. We want to Read Your Book! Dorrance Publishing-Trusted by Authors Since 1920 Book manuscript submissions currently being reviewed. Comprehensive Services: Consultation, Production, Promotion and Distribution Call for Your Free Author's Guide 1-877-626-2213  
Portable Oxygen Concentrator May Be Covered by Medicare! Reclaim independence and mobility with the compact design and long-lasting battery of Inogen One. Free information kit! Call

888-609-2189  
**DENTAL INSURANCE** from Physicians Mutual Insurance Company. NOT just a discount plan, REAL coverage for [350 ] procedures. Call 1-877-308-2834 for details. **www.dental50plus.com/cadnet** 6118-0219  
Attention all Homeowners in jeopardy of Foreclosure? We can help stop your home from foreclosure. The Foreclosure Defense helpline can help save your home. The Call is absolutely free. 1-855-516-6641. Eliminate gutter cleaning forever! LeafFilter, the most advanced debris-blocking gutter protection. Schedule a FREE LeafFilter estimate today. 15% off and 0% financing for those who qualify. PLUS Senior & Military Discounts. Call 1-855-402-0373  
Two great new offers from AT&T Wireless! Ask how to get the Next Generation Samsung Galaxy S10e FREE. FREE iPhone with AT&T's Buy one, Give One. While supplies last! CALL 1-866-565-8452 or **www.freephonesnow.com//cadnet**  
HEAR AGAIN! Try our hearing aid for just \$75 down and \$50 per month! Call 800-426-4212 and mention 88272 for a risk free trial! FREE SHIPPING!  
Cross country Moving, Long distance Moving Company, out of state move \$799 Long Distance Movers. Get Free quote on your Long distance move. 1-844-452-1706  
Call Empire Today® to schedule a FREE in-home estimate on Carpeting & Flooring. Call Today! 1-855-404-2366  
Get NFL Sunday Ticket FREE w/ DIRECTV Choice All-Included Package. \$59.99/month for 12 months. 185 Channels PLUS Thousands of Shows/Movies On Demand. FREE Genie HD DVR Upgrade. Call 1-855-781-1565 or **satellitedealnow.com/cadnet**  
DISH Network \$59.99 For 190 Channels! Add High Speed Internet for ONLY \$19.95/month. Call Today for \$100 Gift Card! Best Value & Technology. FREE Installation. Call 1-855-837-9146

**Wanted To Buy**  
Wants to purchase minerals and other oil and gas interests. Send details to P.O. Box 13557 Denver, Co. 80201  
**ANNOUNCEMENTS**  
WRIGHTS AUCTION CO. (PREVIOUSLY GILBERT'S) MACHINERY CONSIGNMENT SALE, MARCH 2, 9:00 A.M.. Advertising Deadline February 14. No Small Items, Tires after February 21. CONSIGN TODAY, 641-398-2218, Hwy 218, Floyd, IA, **www.wrightsauctionco.com** (MCN)

**AUTOMOBILES**  
CASH FOR CARS: We Buy Any Condition Vehicle, 2002 and Newer. Competitive Offer! Nationwide FREE Pick Up! Call Now For a Free Quote! 888-366-5659 (MCN)  
**DONATE YOUR CAR, TRUCK OR BOAT TO HERITAGE FOR THE BLIND.** Free 3 Day Vacation, Tax Deductible, Free Towing, All Paperwork Taken Care Of. CALL 1-855-977-7030 (MCN)  
**CABLE/INTERNET**  
DISH TV \$59.99 For 190 Channels + \$14.95 High Speed Internet. Free Installation, Smart HD DVR Included, Free Voice Remote. Some restrictions apply. 1-844-316-8876. (MCN)  
BEST SATELLITE TV with 2 Year Price Guarantee! \$59.99/mo with 190 channels and 3 months free premium movie channels! Free next day installation! Call 855-824-1258. (MCN)  
Get NFL Sunday Ticket FREE w/ DIRECTV Choice All-Included Package. \$59.99/month for 12 months. 185 Channels PLUS Thousands of Shows/Movies On Demand. FREE Genie HD DVR Upgrade. Call 1-844-245-2232 or **satellitedealnow.com/MFCP** (MCN)  
Earthlink High Speed Internet. As

Low As \$14.95/month (for the first 3 months.) Reliable High Speed. Fiber Optic Technology. Stream Videos, Music and More! Call Earthlink Today 1-855-679-7096 (MCN)

**COMPUTERS & SUPPLIES**  
**COMPUTER ISSUES? FREE DIAGNOSIS** by GEEKS ON SITE! Virus Removal, Data Recovery! 24/7 EMERGENCY \$20 OFF ANY SERVICE with coupon 42522! Restrictions apply. 1-844-938-0797. (MCN)  
**EMPLOYMENT**  
Crawford Transport, Inc in Lamont Iowa is looking for Company Drivers who have a Class A CDL, 2 years experience, and are willing to work. Flatbed/Stepdeck. We offer 100% paid health insurance, IRA with company match, Percentage pay equaling .58 CPM or more, paid vacation, weekly home time. Call 800-426-0360 (MCN)

**FINANCIAL**  
Over \$10K in Debt? Be debt free in 24 to 48 months. No upfront fees to enroll. A+ BBB rated. Call National Debt Relief 855-995-1557. (MCN)  
**ARE YOU BEHIND \$10k OR MORE ON YOUR TAXES?** Stop wage & bank levies, liens & audits, unfiled tax returns, payroll issues, & resolve tax debt FAST. Call 855-211-8684 (MCN)  
Struggling With Your Private Student Loan Payment? New relief programs can reduce your payments. Learn your options. Good credit not necessary. Call the Helpline 855-238-4594 (Mon-Fri 9am-5pm Eastern) . (MCN)

**FOR SALE**  
FOR SALE: 2016 John Deere Combine- Model S670, excellent condition, 600 separator hours, well equipped. Located in Southern Minnesota. 507-236-6538 (MCN)  
**HEALTH & MEDICAL**  
Stay in your home longer with an American Standard Walk-In Bath-tub. Receive up to \$1,500 off, including a free toilet, and a lifetime warranty on the tub and installation! Call us at 1-855-372-3080 or visit **www.walkintubquote.com/midwest** (MCN)  
VIAGRA & CIALIS! 60 pills for \$99. 100 pills for \$150. FREE shipping. Money back guaranteed! 1-866-306-9928 (MCN)

Are you or a loved one suffering from Depression, Anxiety, PTSD, OCD, Bipolar Disorder, Addictions or other mental or behavioral disorders? Our inpatient treatment services can help you reclaim your life and get back on track. We work with most PPO insurances. Please call 319-900-6879 (MCN)  
Full Spectrum, CBD Rich Hemp Oil. Known to help reduce stress & anxiety, improve sleep, manage chronic pain. Lab Tested. USA Grown not Overseas. 100% Money Back Guarantee. Save Over 33% CALL NOW: 1-877-233-4232 (MCN)  
**\*\*STOP STRUGGLING ON THE STAIRS\*\*** Give your life a lift with an ACORN STAIRLIFT! Call now for \$250 OFF your stairlift purchase and FREE DVD & brochure! 1-877-358-0034 (MCN)

**DENTAL INSURANCE** from Physicians Mutual Insurance Company. NOT just a discount plan, REAL coverage for 350 procedures. Call 1-855-973-9175 for details. **www.dental50plus.com/midwest** 6118-0219. (MCN)  
Portable Oxygen Concentrator May Be Covered by Medicare! Reclaim independence and mobility with the compact design and long-lasting battery of Inogen One. Free information kit! Call 844-716-2411. (MCN)  
VIAGRA and CIALIS USERS! 60 Generic Pills SPECIAL \$99.00. FREE Shipping! 100% Guaranteed. 24/7 CALL NOW! 888-297-2414  
Hablamos Espanol (MCN)  
**INCOME OPPORTUNITIES**  
NEW AUTHORS WANTED! Page Publishing will help you self-publish your own book. FREE author submission kit! Limited offer! Why wait? Call now: 855-623-8796

(MCN)  
Become a published author! Publications sold at all major secular & specialty Christian bookstores. CALL Christian Faith Publishing for your FREE author submission kit. 1-888-981-5761. (MCN)  
**MISCELLANEOUS**  
**DONATE YOUR CAR TO CHARITY.** Receive maximum value of write off for your taxes. Running or not! All conditions accepted. Free pickup. Call for details. 855-752-6680 (MCN)  
FREE AUTO INSURANCE QUOTES for uninsured and insured drivers. Let us show you how much you can save! Call 855-648-7642. (MCN)  
**BATHROOM RENOVATIONS.** EASY, ONE DAY updates! We specialize in safe bathing. Grab bars, no slip flooring & seated showers. Call for a free in-home consultation: 855-836-2250 (MCN)  
A PLACE FOR MOM has helped over a million families find senior living. Our trusted, local advisors help find solutions to your unique needs at no cost to you. Call 1-888-894-7038 (MCN)  
Unable to work? Denied benefits? We Can Help! Strong recent work history needed. Call to start your application or appeal today! 1-866-276-3845 --Steppacher Law Offices LLC Principal Office: 224 Adams Ave Scranton PA 18503. (MCN)  
SAVE BIG on HOME INSURANCE!

**martincountylibrary.org**  
**CHECK IT OUT!**  
**@ the Martin County Library**  
Here are a few new titles hitting the shelves in February! Ask your librarian to add your name to the list TODAY!!  
The Splendid and the Vile by Erik Larson: On Winston Churchill's first day as prime minister, Adolf Hitler invaded Holland and Belgium. For the next twelve months, Hitler would wage a relentless bombing campaign, killing 45,000 Britons. It was up to Churchill to hold his country together and persuade

Compare 20 A-rated insurance companies. Let us do the shopping & save you time & money. Get a quote within minutes. Average savings of \$444/year! Call 855-697-1892. (M-F 8am-8pm Central). (MCN)  
**PROTECT YOUR HOME AND FAMILY** with Vivint Smart Home. Call 844-500-8711 today to receive a FREE \$50 GIFT CARD with your purchase. Use promo code: FREE50. (MCN)  
**PERSONALS**  
Meet singles right now! No paid operators, just real people like you. Browse greetings, exchange messages and connect live. Try it free. Call now: 855-651-0114. (MCN)  
Wanna flirt and have some fun? Livelinks is the best chatline for meeting real singles who know how to have a good time! Call Livelinks and make a real connection. 866-910-1044 (MCN)

**VACATION/TRAVEL**  
Orlando + Daytona Beach Florida Vacation! Enjoy 7 Days and 6 Nights with Hertz, Enterprise or Alamo Car Rental Included - Only \$298.00. 12 months to use. Call Now! 844-277-5137. (24/7) (MCN)  
**WANT TO BUY**  
WANT TO PURCHASE MINERALS and other OIL/GAS INTERESTS. Please send details to: P.O. Box 13557, Denver CO 80201 (MCN)

President Roosevelt that Britain was a worthy ally.  
The Other Mrs. by Mary Kubica: Sadie and Will Foust have just moved to small-town Maine when their neighbor Morgan Baines is found dead in her home. As the eyes of suspicion turn toward the new family in town, Sadie is drawn deeper into the mystery of what really happened.

Golden in Death by J. D. Robb: Pediatrician Kent Abner received a package containing a cheap trinket, a golden egg that could be opened into two halves. When he pried it apart, highly toxic airborne fumes entered his body—and killed him. While looking for the sender, someone else dies in the same manner, setting Eve Dallas on the deadly trail.

**St. John Vianney School** in Fairmont announced its second quarter 2019-2020 honor roll:  
**GRADE 5: "A" Honor Roll:** Clare Striemer  
**"B" Honor Roll**  
• Makenna Fischer  
• Norah Heille  
• Leo Juarez  
• Collin Kain  
• Regina Oberbeck  
**GRADE 6: High Honors:**  
• Ella Krahmer  
• Bel Lutterman  
**"A" Honor Roll:**  
• Isaac Stone  
**"B" Honor Roll:**  
• Matthias Bliesmer  
• Thomas Hamlet  
• Rebekah Landsteiner  
• Brylee Miller  
• Seth Siebring

**at CAMPBELL STREET APARTMENTS**  
**FIRST 2 MONTHS RENT FREE!!**  
1 & 2-bedroom apartments available  
Call Theresa today 507-514-3955 • 507-345-1290 **www.smrrental.com**  
Equal Opportunity Housing

**at TRIMONT SQUARE APARTMENTS**  
**FIRST 3 MONTHS RENT FREE!!**  
1-bedroom apartments  
Rent including heat, water, sewer and garbage.  
We have a community room and patio area.  
Call Theresa today 507-514-3955 • 507-345-1290 **www.smrrental.com**  
Equal Opportunity Housing

## Dental Insurance

Get dental insurance from Physicians Mutual Insurance Company to help cover the services you're most likely to use -

☒ Cleanings ☒ X-rays ☒ Fillings ☒ Crowns ☒ Dentures

**1-877-308-2834**  
Call now to get this FREE Information Kit!  
**dental50plus.com/cadnet**

Product not available in all states. Acceptance guaranteed for one insurance policy/certificate of this type. Contact us for complete details about this insurance solicitation. This specific offer is not available in CO, NY; call 1-888-799-4433 or respond for similar offer. Certificate C250A (ID: C250E; PA: C2500); Insurance Policy P150 (GA: P150GA; NY: P150NY; OK: P150OK; TN: P150TN). 6154-0120

CALL NOW & SAVE ON YOUR NEXT PRESCRIPTION		
Drug Name	Qty (pills)	Price*
Viagra 100mg	16	\$120.00
Viagra 50mg	16	\$100.00
Cialis 5mg	84	\$150.00
Cialis 20mg	16	\$119.00
Levitra 20mg	30	\$130.00
Stendra 200mg	16	\$260.00
Spiriva 18mcg	90	\$130.00
Advair 250mcg/50mcg	180 ds	\$190.00

All pricing in U.S. dollars and subject to change without notice. \*We accept Amex, Electronic Checking, Personal Check or International Money Order. \*Prices shown are for the equivalent generic drug if available.\*

**1-855-530-8993**

Mailing Address: World Health Link, PO Box 42 Station Main Winnipeg, MB R3C 2G1 Canada

**CODE MG09**

## NOW RENTING IN WELCOME

**at CAMPBELL STREET APARTMENTS**  
**FIRST 2 MONTHS RENT FREE!!**  
1 & 2-bedroom apartments available  
Call Theresa today 507-514-3955 • 507-345-1290 **www.smrrental.com**  
Equal Opportunity Housing

## NOW RENTING IN TRIMONT

**at TRIMONT SQUARE APARTMENTS**  
**FIRST 3 MONTHS RENT FREE!!**  
1-bedroom apartments  
Rent including heat, water, sewer and garbage.  
We have a community room and patio area.  
Call Theresa today 507-514-3955 • 507-345-1290 **www.smrrental.com**  
Equal Opportunity Housing





**CLEARING THE PUCK** - Mackenzie Householder clears the puck from behind the net while Card goalie Rachel O'Connor and Windom's Fredin look on. Householder, who has 14 goals as of Saturday, scored her 50th career goal in the first period. Brooklyn Meyer had the Cards other goal. The Eagles won in overtime 3-2. *Courtesy fairmontsports.com*



**KICK SAVE** - Card goalie Carson Musser deflects Windom's Alex Espenson shot. The Eagles edged the Cards 4-3 last Tuesday night at the Martin County Arena. Carson Kuhl had two goals. Brycen Lutterman scored the other Cards goal. *Courtesy fairmontsports.com*



**IN TRAFFIC** - Cardinals Zach Jorgenson drives in for two against the Bobcats Nick Shefers. Brookings defeated the Cards 68-67 in overtime last Saturday. *Courtesy fairmontsports.com*



**LEFTY FLOATER** - Cards Emma Gudahl tries for two against New Ulm's Kirsten Dennis. The Cards crushed the Eagles 71-41 last Friday night. *Courtesy fairmontsports.com*



**LAY-UP** - Cards Rayah Quiring goes in for two against Brookings' Ainsly Shelstra, while teammate Johanna Miller looks on. The Bobcats defeated the Cards 47-39 last Saturday. *Courtesy fairmontsports.com*

Fairmont 7th grade girls Cougar Classic champions



Game 1 - Fairmont 7th grade Red-35, Red Wing 7th grade- 28. Scoring - Ellie Ortega 13 pts., Kennedy Becker 8 pts., Meredith Nemmers 3 pts., Brylee Miller 11 pts. Rebounds: Ava Rodning 2, Carys Gudahl 2, Ellie Ortega 2, Kennedy Becker 1, Meredith Nemmers 7, Saige Leiding 1, Brylee Miller 6

Game 2 - Fairmont 7th grade Red - 34, Mankato 7th grade - 4. Scoring - Ava Rodning 2 pts., Carys Gudahl 1 pt., Ellie Ortega 2 pts., Kennedy Becker 4 pts., Meredith Nemmers 9 pts., Saige Leiding 4 pts., Brylee Miller 12 pts. Rebounds: Carys Gudahl 2, Ellie Ortega 2, Kennedy Becker 1, Saige Leiding 1, Brylee Miller 4.

Red Bulls compete at Swalla Duals Tourney

The Class #2AA Martin County Red Bulls went 2-2 at the Kasson-Mantorville Swalla Duals this past Saturday. Picking up four wins for the Red Bulls - 126 lb Class AA #2-ranked Jaxson Rohman; 138 lb #2-ranked Connor Simmonds (2 pins, MD & TF); 195 lb #5-ranked Jacob Rahn (pin); 152 #2-ranked Payton Anderson had 3 wins with a pin.

Results: Martin County 40, Forest Lake (#6AAA) 20; Martin County 70, Lewiston Altura Rushford Peterson 0; Shakopee (#1 AAA) 43, Martin County 19; Kasson Mantorville (#3 AA) 38, Martin County 25. The Red Bulls host St. James this Friday.



**KNEE HIGH** - The Cardinal Dance team (above and below) performed during the Cardinals vs Brookings, South Dakota boy/girl double-header basketball games last Saturday. *Courtesy fairmontsports.com*



The 2019-2020 Martin Luther High School, Northrop Triple A nominees are Lydia Steinhaus and Cayden Fischer. The Triple A Award (*Academics, Athletics, and Arts*) recognizes seniors who have excelled in those three areas over their high school career. Nominees must have a minimum 3.0 GPA at the time of nomination and have participated in League-sponsored athletic and fine arts activities at some time during their high school career. "Triple A" Award recipients are nominated by their school and selected through a multi-level process involving member schools of the League, the League's administrative regions, and a special committee of educators, business leaders, and members from the fine arts and athletic communities. (*Submitted photo*)



# Dining and Entertainment

Coming to the  
Fairmont Opera House...

## Blake & Co Show: Love Songs!

SATURDAY, FEBRUARY 1ST AT 7:30PM

This season's annual fundraiser show has a theme for the month of romance: Love Songs! From classics to now, you'll be sure to leave the Opera House with stars in your eyes. All profits of this show go toward the Launch the Legacy Capital Campaign.



507-238-4900 or fairmontoperahouse.org

# PhotoPress

Only good news

## ANNOUNCEMENT

More "Good News"  
from the Photo Press!

The Photo Press welcomes the  
Odin area into our circulation!

Our circulation has now increased to 12,348!

## Fairmont Eagles



1228 Lake Ave • 238-2555

Friday, January 31 • 5-7pm:

Month's Burger:  
BLT Burger

Burger Night  
Burgers \$6



Sunday, February 2 • 8:30am to 12:30pm: Breakfast Buffet • \$10

Monday, February 3: Kitchen opens 5pm • Bingo 7pm

Fridays: Full Menu Available • Full Service Bar • Everyone Welcome! f

## eat play shop LOCAL

### Dell Lutheran's 38th Annual Scandinavian Smörgåsbord

Sunday, February 2  
11 a.m. - 3 p.m.

\$18 Donation - Adults  
\$6 Donation - Under 10 Years Old  
All proceeds support Mission Projects

MENU  
Lutefisk-Klubb-Norwegian Meatballs-  
Mashed Potatoes-Corn-Homemade  
Buns-Lefse-Norwegian Rice-Fruit Soup-  
Rommegrot-Kringla-Rosettes-  
and much more!

BAKE SALE: Proceeds support  
Women's Missionary Federation of Dell

VALET PARKING

### DELL LUTHERAN CHURCH

47500 97th St. Frost, MN  
From I-90 Frost Exit, go 1 1/4 mile south  
and 1/2 mile east

dellfreechurch.org • We're on Facebook

Where our desire is to know Christ  
and make Him known.

## HD Graphics!



Play 37  
Major  
Courses

Food &  
Beverages

For more info: 235-5719  
www.bowlmor-lanes.com

## BOWL MOR LANES

617 S. State St. Fairmont, MN

## HOT MEALS ON WHEELS

Hot Meals on Wheels are  
Monday through Saturday for  
convalescents and persons  
who cannot purchase  
and prepare adequate  
meals. Meals are prepared  
by Lakeview Methodist  
Healthcare and volunteers  
deliver in Fairmont between  
11 a.m. and noon each day.  
This is a community project  
and is non-profit and not  
government funded. For  
more info on Hot Meals  
on Wheels, contact Karen  
Toupal 507-236-8781.

## OPENING SATURDAY

Feb 8th!!

a gift from the  
Heart



Order  
Early!

DAIRY QUEEN® FROZEN CAKES FOR ALL OCCASIONS!



SOMETHING DIFFERENT

507-235-5005 • 1326 Blue Earth Ave.  
Fairmont • dairyqueen.com

HOURS: Noon to 8PM  
CLOSED Mondays & Tuesdays

During Inclement Weather, we may be CLOSED.  
Make sure to check our Facebook page frequently  
in case of CLOSURE or Hour Variations.

## SENIOR DINING WEEKLY MENU

Senior Dining is served each weekday at 11:30 a.m. at Friendship Village Monday thru Friday. Meals catered by Lakeview Methodist Healthcare. To reserve your meal, call 238-1650 between 9 a.m. and noon the day before. All area seniors welcome. LSS Senior Nutrition is made possible in part under the Federal Older American Act through an award from the MN River Area Agency on Aging under an area plan approved by the MN Board on Aging.

JAN 30 - FEB 5

THURS: Porcupine meatballs, baked potatoes, winter mix veggie, bread pudding.

FRI: Tilapia, scalloped potatoes, tomatoes & zucchini, ice cream.

MON: Meatloaf, creamed potatoes, peas & carrots, pie.

TUE: Pork chops, rice, corn, spiced apple ring, blueberry crisp.

WED: Salisbury steak, mashed potatoes, gravy, harvard beets, cheesecake with cherry topping.

# Militello Motors

## '19 RAM 1500 CREW



SLT, Power bench seat with console, 14K miles, Large 8.4" screen & rear camera. 2 avail

**\$25,995 or \$389/mo.** 72 mo 4.99%

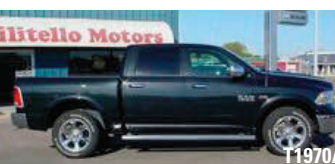
## '14 RAM 2500 CREW CAB



Matching topper 5.7 Hemi, Only 29000 miles

**\$25,995 or \$395/mo.**

## '16 RAM 15 CREW CAB LARAMIE



39000 miles heated/cooled seats

**\$30,995 or \$479/mo.**

## '18 CHRYSLER PACIFICA LIMITED



Rear dual DVD, 20" wheels, 8 pass capable

**\$31,995 or \$485/mo.**

## '19 DODGE CHARGER AWD



GT Plus, 18K miles, Blind spot monitor, heated leather, 28+ mpg hwy

**\$27,495 or \$409/mo.**

## '17 CHRYSLER PACIFICA TOURING L PLUS



Dual power heated/vented leather, rear DVD only 24000 miles

**\$27,995 or \$419/mo.**

## '13 FORD F-150 CREW



Platinum ed, Loaded 3.5 Ecoboost, power running boards, sunroof 93K miles

**\$22,995 or \$399/mo.**

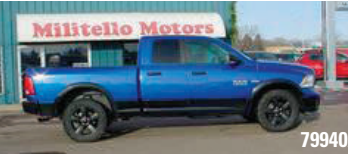
## '13 GMC SIERRA 1500 CREW



Loaded SLT, sunroof, heated leather, local trade

**\$22,995 or \$339/mo.**

## '15 RAM 1500 QUAD CAB



Outdoorsman ed

**\$23,995 or \$349/mo.**

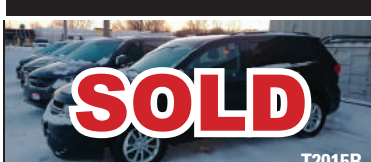
## '18 FIAT 500 HATCHBACK



Pop trim level, 100 miles! Lots of warranty 24/32 epa rated mileage

**\$13,995 or \$225/mo.** 60 mo 3.99%

## '15 DODGE JOURNEY SXT



7 pass, 61000 miles

**\$9,995 or \$147/mo.** 60 mo 4.99%

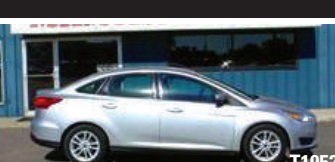
## '13 CHRYSLER 200 TOURING



Heated cloth, sunroof, 85K miles

**\$8,495 or \$119/mo.** 60 mo 3.99%

## '15 FORD FOCUS



SE trim, only 57000 miles

**\$9,995 or \$147/mo.** 60 mo 3.99%

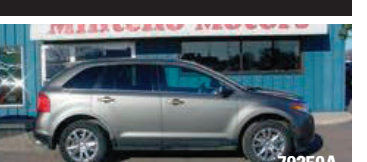
## '12 HONDA FIT



1.5L 5 sp man. 27/33 epa rated, mileage, only 56000 miles!

**\$7,995 or \$110/mo.** 60 mo 3.99%

## '13 FORD EDGE LIMITED



AWD, remote start, heated leather...116000 miles clean local trade

**\$12,995 or \$199/mo.**

All payments plus tax and license 2000 down cash W.A.C.



# Militello Motors



1029 N. State St, Fairmont, MN • 238-4444 • 1-800-733-0587 • militellomotors.com

\*Payments based on \$2,000 down plus tax & lic. With approved credit. www.militellomotors.com